

Paul H. Helland, 1107 Technology Parkway, Cedar Falls, Iowa 50613-6951, (319)-266-0161

**UNITED STATES PUBLIC LAND SURVEY CORNER CERTIFICATE
 OF**

LAND SURVEY MONUMENTS SITUATED IN SECTION NO. 36, TOWNSHIP NO. 95 NORTH, RANGE
 NO. 12 WEST OF THE FIFTH PRINCIPAL MERIDIAN, CHICKASAW COUNTY, IOWA.
 PREVIOUSLY RECORDED IN BOOK _____, PAGE _____.

(SHOW REASON FOR PREPARING THIS CERTIFICATE, THE EVIDENCE AND DETAILED PROCEDURES USED IN ESTABLISHING THE
 CORNER POSITIONS AND MONUMENTATION FOUND OR PLACED.)

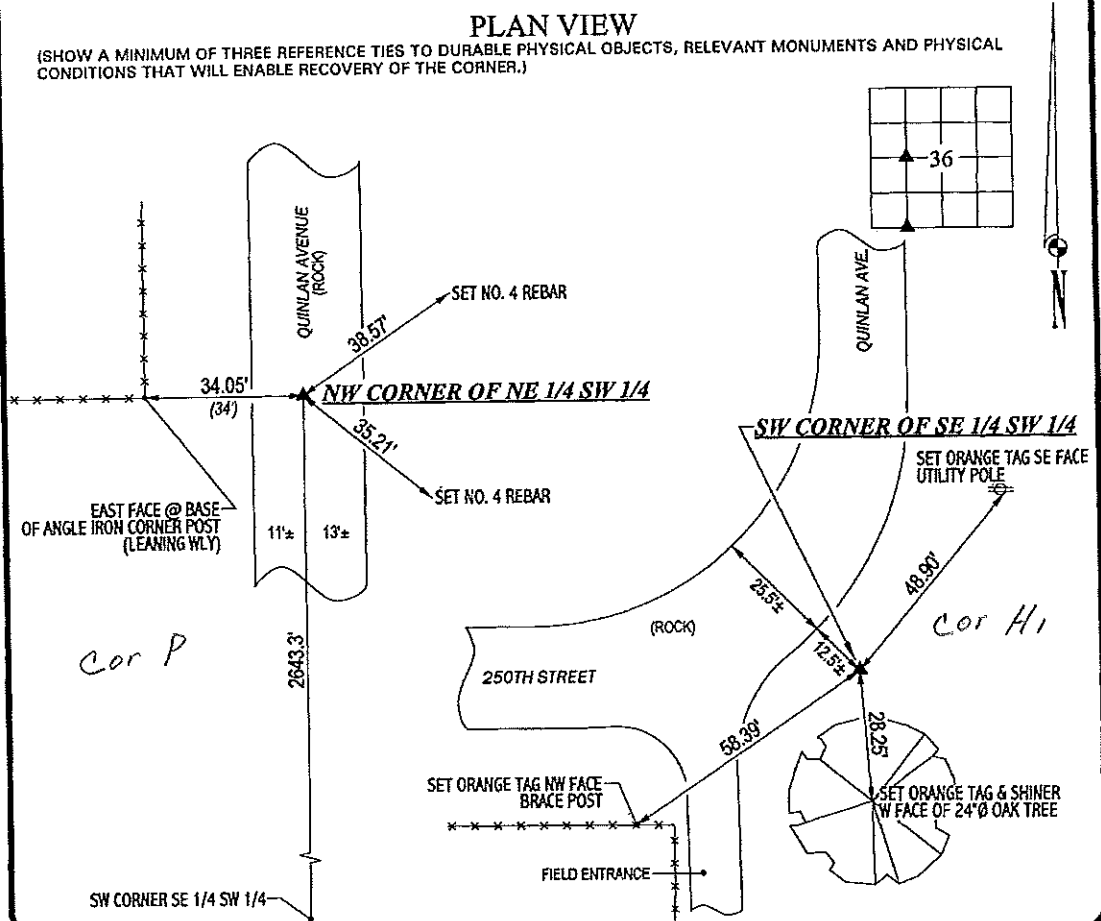
MONUMENT DESCRIPTION AND REMARKS:

NO CORNER CERTIFICATES ON FILE. SURVEY DONE IN E 1/2 SW 1/4 OF SEC. 36-T95N-R12W.

- NW CORNER OF NE 1/4 SW 1/4: CHICKASAW COUNTY ENGINEER REFERENCE TIES DATED 5/7/1957 DO NOT STATE WHAT IS @ CORNER. FOUND 7/8" Ø SMOOTH SIDE IRON PIN CORRESPONDING TO ONE REMAINING REFERENCE TIE (CORNER POST WEST). CORNER IS 0.3' DEEP.
- SW CORNER OF SE 1/4 SW 1/4: CHICKASAW COUNTY ENGINEER REFERENCE TIES DATED 5/7/1957 CALLS FOR "I.P.". FOUND 1/2" Ø SMOOTH SIDE IRON PIN. NO REFERENCE TIES REMAIN. CORNER IS 0.2' DEEP.

PLAN VIEW

(SHOW A MINIMUM OF THREE REFERENCE TIES TO DURABLE PHYSICAL OBJECTS, RELEVANT MONUMENTS AND PHYSICAL
 CONDITIONS THAT WILL ENABLE RECOVERY OF THE CORNER.)



HELLAND ENGINEERING & SURVEYING, LTD.
 1107 Technology Parkway
 Cedar Falls, Iowa 50613-6951
 (319)-266-0161

(00.00) - PER CHICKASAW COUNTY REFERENCE TIES
 FILE NAME: 03-203CC.DRG



I hereby certify that this land surveying document was prepared and the related survey work was performed by me or under my direct personal supervision and that I am a duly licensed Land Surveyor under the laws of the State of Iowa.
Paul H. Helland 6/12/03
 Paul H. Helland
 License Number 6505
 My license renewal date is December 31, 2003.
 All pages or sheets are covered by this seal except:

LIST CORNERS TO BE INDEXED

CORNER	SECTION	TOWNSHIP	RANGE
NW CORNER	36	95N	12W
NE 1/4 SW 1/4			
SW CORNER	36	95N	12W
SE 1/4 SW 1/4			

Rec Filed 8-15