

Section 25-95-12  
As referred to in  
Engr Tie Book

TeKIPPE ENGINEERING, P.C., 128 South Vine Street, West Union, Iowa 52176 Phone (319) 422-5131

UNITED STATES PUBLIC LAND SURVEY CORNER CERTIFICATE

OF 25

Land Survey Monuments situated in Section 36, Township 95 North, Range 12 West, of the Fifth Principal Meridian, CHICKASAW County, Iowa. Previously recorded in NONE in County Recorder's Office.

(book, page, document number, etc.)

(Show reason for preparing this certificate, the evidence and detailed procedures used in establishing the corner positions and monumentation found or placed.)

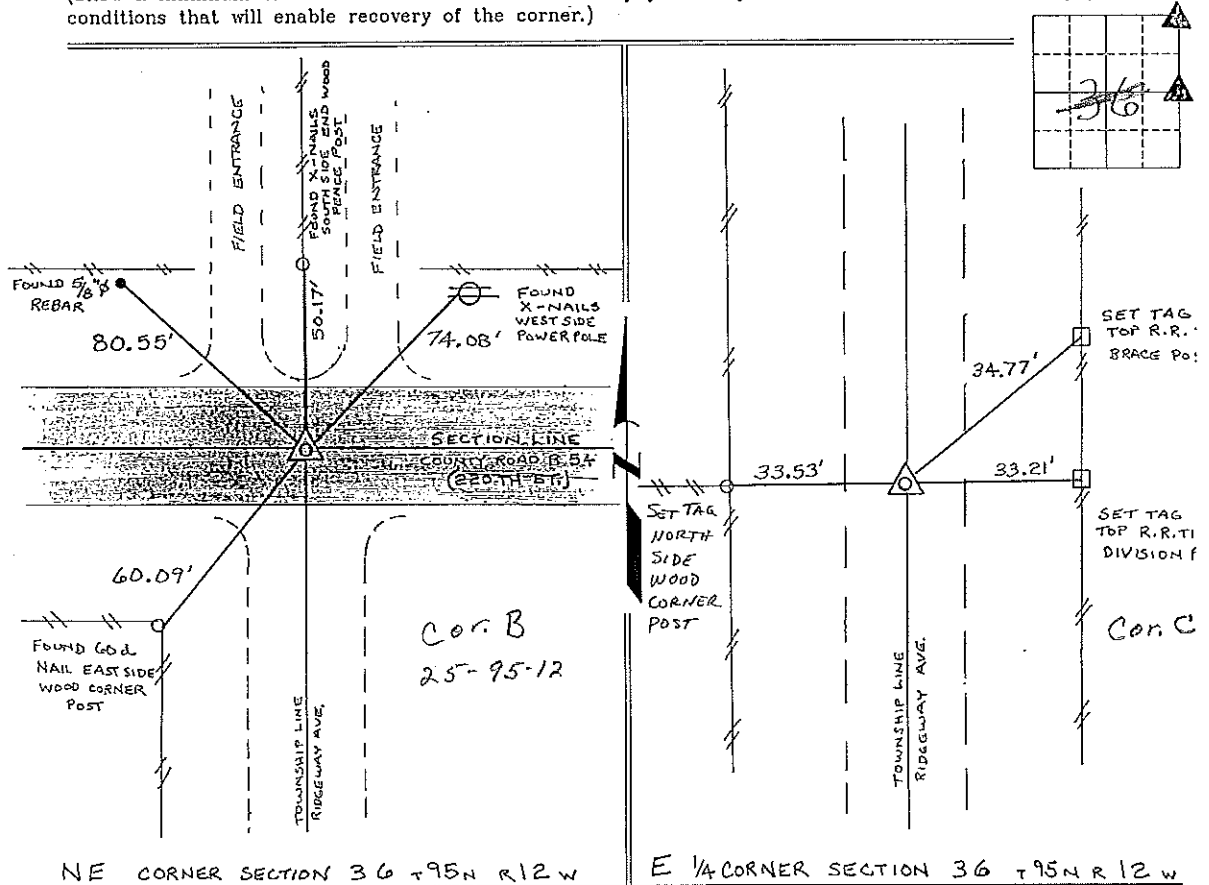
Monument Description and Remarks: NE CORNER SECTION 36 T95N R12W: FOUND PK NAIL.

E 1/4 CORNER SECTION 36 T95N R12W: FOUND 1/2" Ø REBAR.

NOTE: BOTH CORNERS WERE FOUND FROM INFORMATION OBTAINED FROM THE CHICKASAW COUNTY ENGINEERS OFFICE, IN FIELD BOOK "NEW HAMPTON TWP. CORNER TIES".

PLAN - VIEW

(Show a minimum of three reference ties to durable physical objects, relevant monuments and physical conditions that will enable recovery of the corner.)



NE CORNER SECTION 36 T95N R12W

E 1/4 CORNER SECTION 36 T95N R12W

I hereby certify that this land surveying document was prepared and the related survey work was performed by me or under my direct personal supervision and that I am a duly licensed Land Surveyor under the laws of the State of Iowa.



*Lyle G. TeKippe* 5-1-97  
Lyle G. TeKippe Date  
License number 7060  
My license renewal date is December 31, 1998.  
Sheets covered by this seal: Individual

List Corners to be Indexed			
Corners	Section	Twp.	Range
NE	36	95N	12W
	Cor B	25-95-12	
E 1/4	36	95N	12W

CORNER C 36-95-12  
Placed in Tie Book