

Herold - Reicks Surveying, 25 1/2 East Main Street, Suite 204, New Hampton, IA 50659, Ph. 641-294-2725

UNITED STATES PUBLIC LAND SURVEY CORNER CERTIFICATE

Land Survey Monuments situated in Section 2, Township 95 North, Range 12 West of the Fifth Principal Meridian, Chickasaw County, Iowa. Not previously recorded in the County Recorder's office.

This certificate is being prepared in compliance with Iowa Code Chapter 355.11 because:

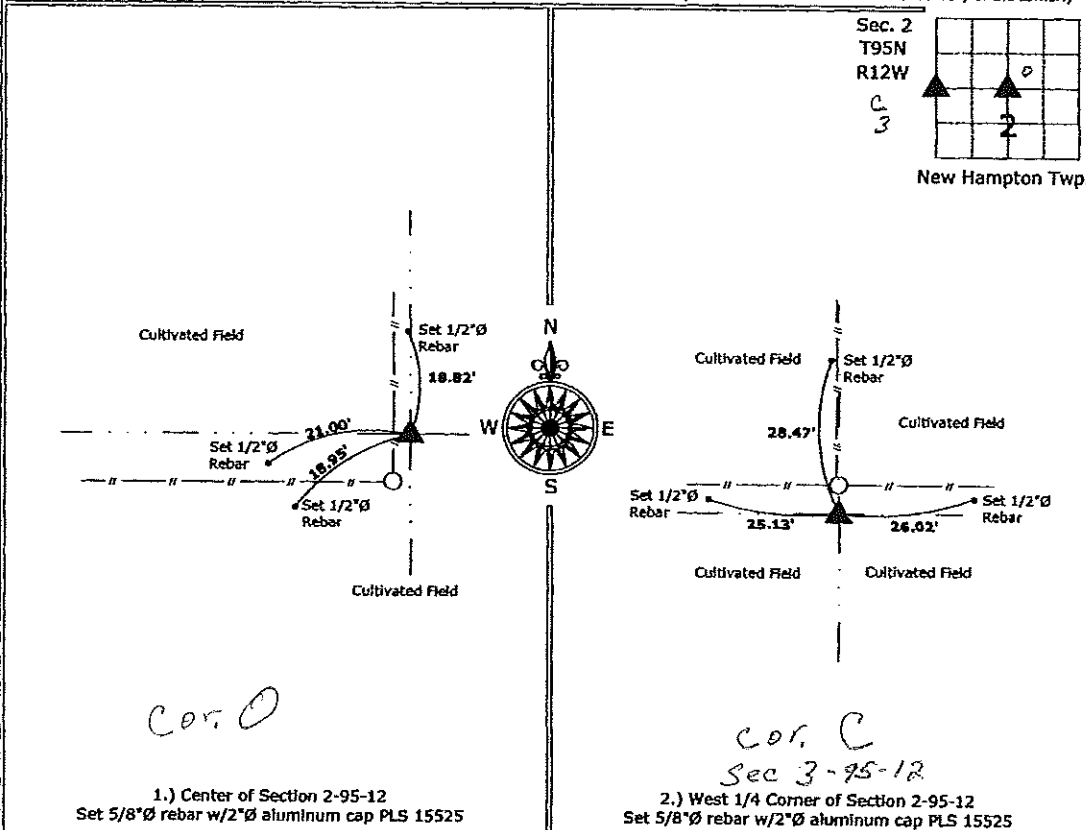
- There is no certificate on file for this corner.
- There are no longer three valid ties of record.
- There are changes to reference ties of record.
- There is change of monumentation of record.
- To clarify description of record monument (ties).

Monument Description and Remarks:

- 1.) **Center of Section:** Set 5/8"Ø rebar with 2"Ø aluminum cap PLS 15525 at the intersection of 1/4 Section lines.
- 2.) **West 1/4 Corner:** Set 5/8"Ø rebar with 2"Ø aluminum cap PLS 15525 at an existing fence corner after comparing the position to the adjacent corners in the section, there are no records of the perpetuation of a monument at this corner position.

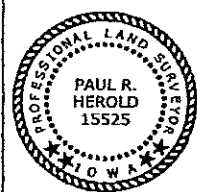
PLAN - VIEW

(Show a minimum of three reference ties to durable physical objects, relevant monuments and physical conditions that will enable recovery of the corner.)



1.) Center of Section 2-95-12
 Set 5/8"Ø rebar w/2"Ø aluminum cap PLS 15525

2.) West 1/4 Corner of Section 2-95-12
 Set 5/8"Ø rebar w/2"Ø aluminum cap PLS 15525



I hereby certify that this land surveying document was prepared and the related survey work was performed by me or under my direct personal supervision and that I am a duly licensed Land Surveyor under the laws of the State of Iowa.

Paul R. Herold 5-5-09
 Paul R. Herold Date:
 License number 15525
 My license renewal date is December 31, 2010.
 Sheets covered by this seal: Individual sheet only

List Corners to be Indexed			
Corners	Section	Twp.	Range
CENTER	2	95	12
W 1/4	2	95	12

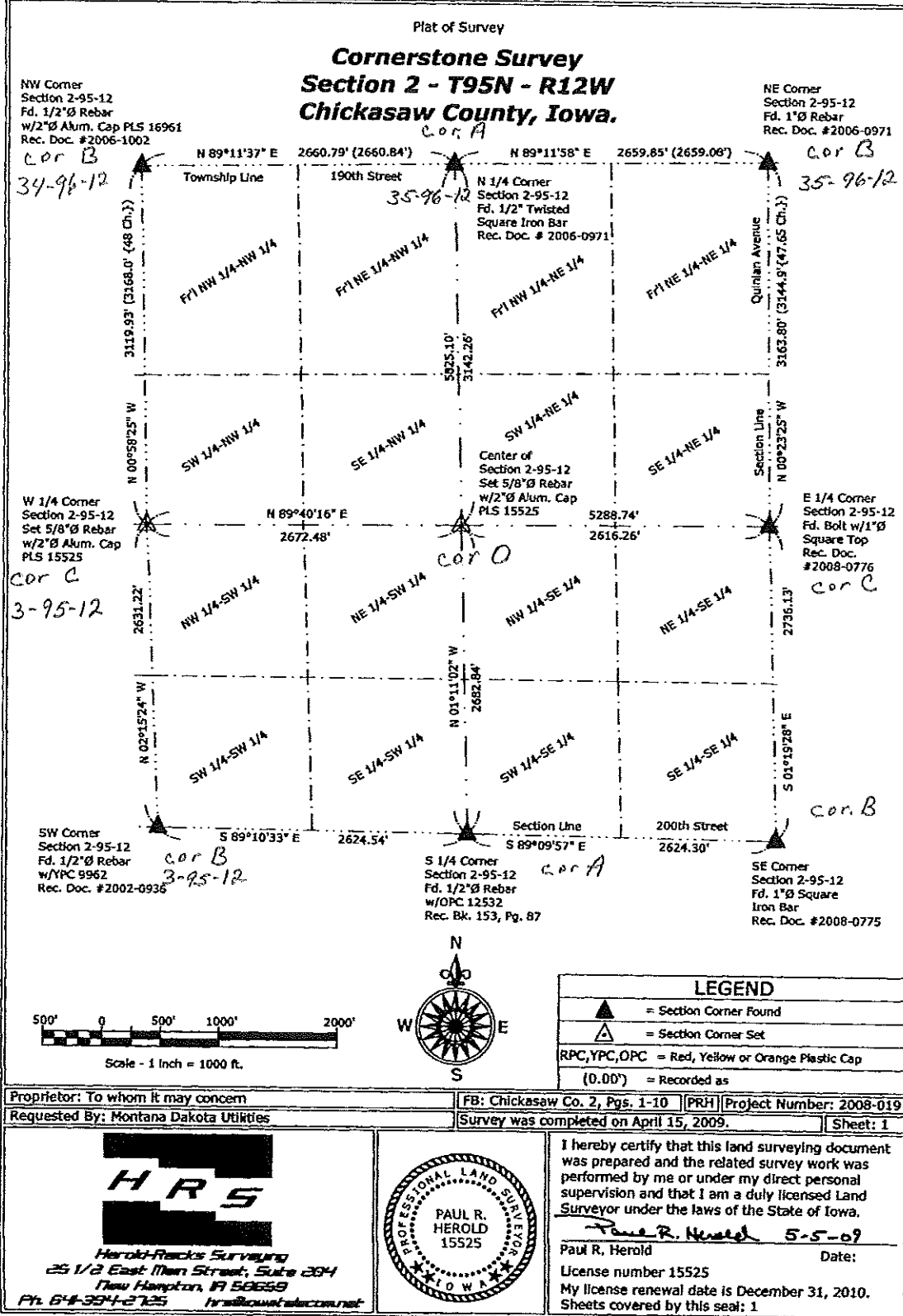
Project Number: 2008-019
 FB: Chickasaw County 2, Pgs. 1-10

File: S:\Projects\2008-019\dwg\2008-019.dwg, 5/5/2009 09:30:13

Section 34-96-12
As referred to in
Eng. Trc Book

Chickasaw Co. Recorder
Cindy Messersmith
Fee Book 2009-0915
05/05/2009 @1230PM
PS PLAT OR SURVEY
Book: Page: # Pages: 1
Total Fees: \$7.00

Prepared by Herold - Reicks Surveying, 25 1/2 East Main Street, Suite 204, New Hampton, IA 50659, Ph. 64-394-2725

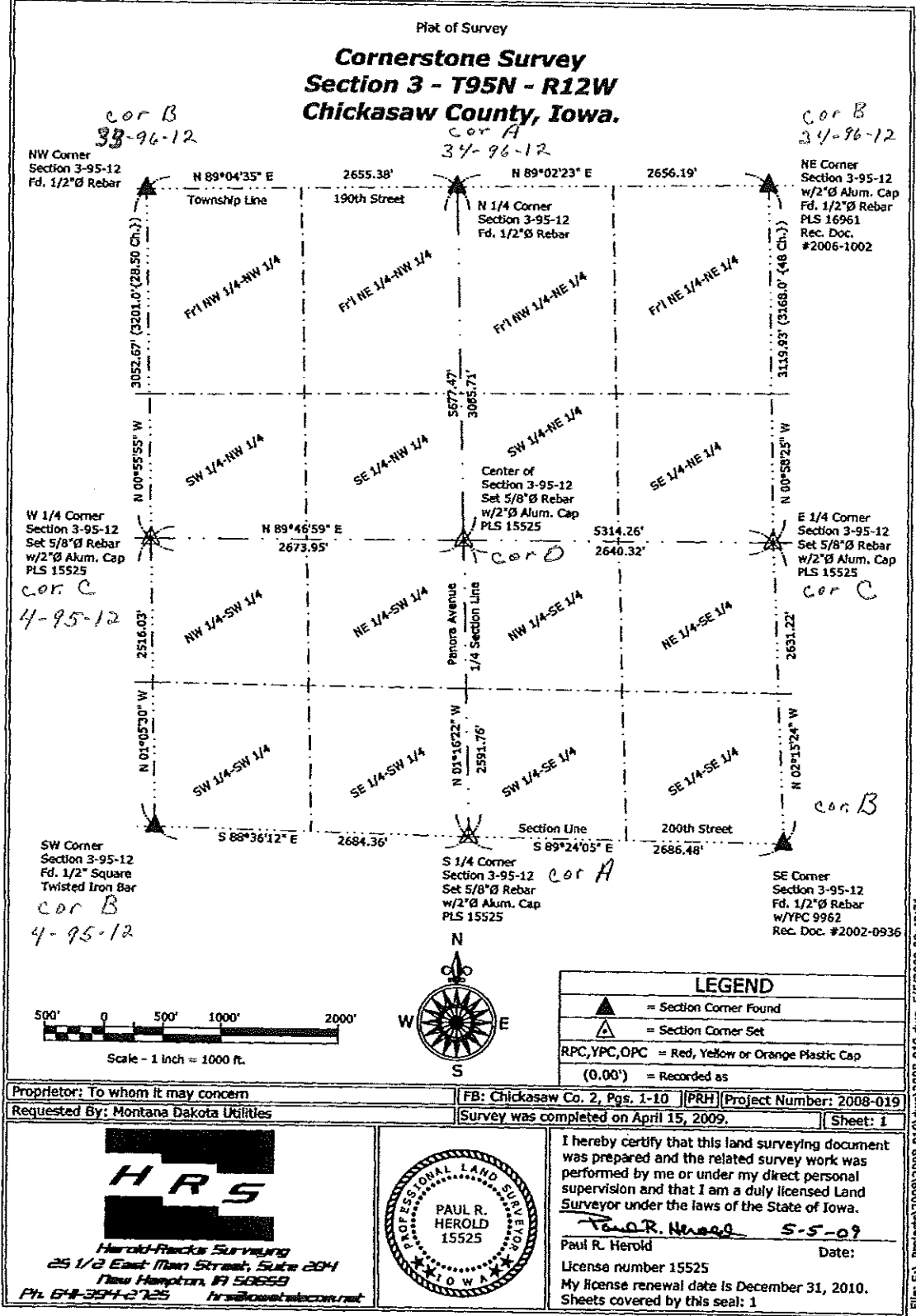


File: S:_Projects\2008\2008-019.dwg, 5/5/2009 09:43:05

Section 34-96-12
As referred to in
Engr. The Book

Chickasaw Co. Recorder
Cindy Messersmith
Fee Book 2009-0914
05/05/2009 @12:27PM
PS PLAT OR SURVEY
Book: Page: # Pages: 1
Total Fees: \$7.00

Prepared by Herold - Reicks Surveying, 25 1/2 East Main Street, Suite 204, New Hampton, IA 50659, Ph. 641-394-2725



File: S:\Projects\2008\2008-019\map\2008-019.dwg, 5/5/2009 09:43:21