

DOCUMENT No. 02059 FILED FOR RECORD THE 6th DAY OF May 1996 AT 11:27 STATE OF IOWA, CHICKASAW COUNTY.  
 RECORDING FEE \$ 6.00 O'CLOCK A. BOOK 160 DEED 441 PAGE 441 By Leitha M. Eoss Recorder  
 TRANSFER FEE \$ --- LEITHA M. EOSS Deputy

Prepared by: Erdman Engineering P.C. 708 Commerce Drive, P.O. Box 246, Decorah Iowa, 52101  
 Phone (319)382-4194, Fax (319)382-3623

United States Public Land Survey Corner Certificate

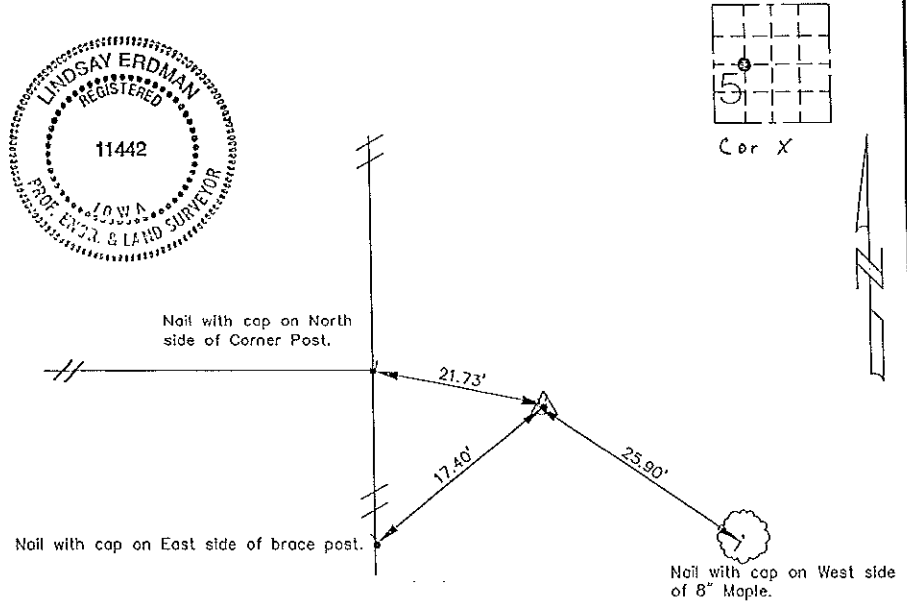
of

Land Survey Monuments situated in Section, 5 Township, 95 Range, 12 of the Fifth Principle Meridian,  
Chickasaw County, Iowa. Previously recorded in does not apply in County Recorders Office.

(Show reason for preparing this certificate, the evidence and detailed procedures used in establishing the corner positions and monumentation found or placed.)

Monument Description and Remarks: This certificate is prepared in accordance with Section 355.11 of the 1995 Code of Iowa. No previous certificate has been filed for this corner location. We set a 1/2" bar with cap RLS #11442 on line and midway between the Center Section and the W 1/4 Corners as the W 1/8 corner of Sec. 5-95-12.

Plan-View  
 (Show a minimum of three reference ties to durable physical objects, relevant monuments and physical conditions that will enable recovery of the corner.)



I hereby certify that the survey work was completed and this certificate was prepared by me or under by direct supervision and that I am a duly registered land surveyor under the laws of the State of Iowa.

Signature: Lindsay Erdman  
 Lindsay Erdman, P.E. and L.S.

Date: 4/27/96 Reg. No. 11442

My license will be renewed January 1, 1997

List Corners to be Indexed			
Corners	Section	Twp.	Range
W 1/8	5	95	12