

DOCUMENT NO. 02057 FILED FOR RECORD THE 6th DAY OF MAY 1996 AT 11:27 LEITHA H. ROSS Recorder  
 RECORDING FEE \$ 6.00 O'CLOCK A.M. BOOK 160 DEED PAGE 439 By Leitha H. Ross Deputy

Prepared by: Erdman Engineering P.C. 708 Commerce Drive, P.O. Box 246, Decorah Iowa, 52101  
 Phone (319)382-4194, Fax (319)382-3623

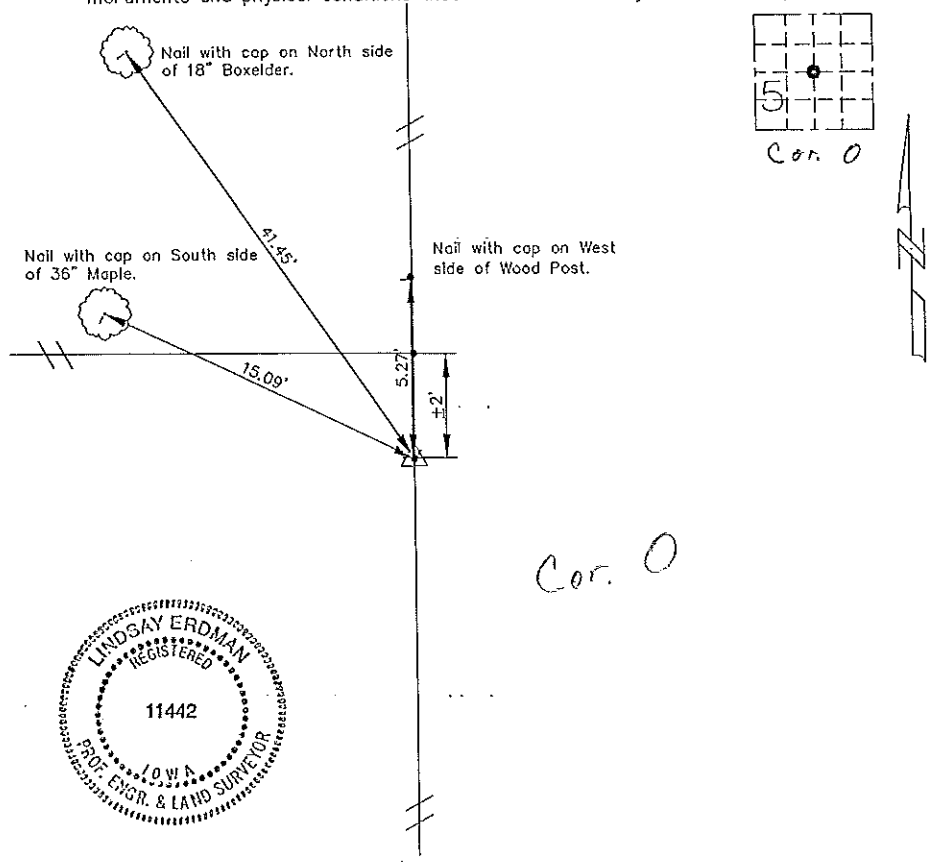
United States Public Land Survey Corner Certificate  
 of.

Land Survey Monuments situated in Section 5 Township 95 Range 12 of the Fifth Principle Meridian,  
Chickasaw County, Iowa. Previously recorded in does not apply in County Recorders Office.

(Show reason for preparing this certificate, the evidence and detailed procedures used in establishing the corner positions and monumentation found or placed.)  
 Monument Description and Remarks: This certificate is prepared in accordance with Section 355.11 of the 1995 Code of Iowa. No previous certificate has been filed for this corner location. Based on County Engineer's Records we set a 1/2" bar with cap RLS #11442 at the Center of Sec. 5-95-12. County Engineer's Records show a distance of 2641.32' from the W 1/4 to the Center Section, and a distance of 2706.00' from the E 1/4 to the Center Sec. We had a field measured distance of 5342.90' between the E 1/4 and the W 1/4 compared to a recorded distance of 5344.72'. We proportioned our field measured distance with the record distance to get an E.- W. location. We used the County Engineer's random chaining notes for a record distance of 2622.84' North of the S 1/4 corner to get a N.- S. location.

Plan-View

(Show a minimum of three reference ties to durable physical objects, relevant monuments and physical conditions that will enable recovery of the corner.)



I hereby certify that the survey work was completed and this certificate was prepared by me or under by direct supervision and that I am a duly registered land surveyor under the laws of the State of Iowa.

Signature Lindsay Erdman  
 Lindsay Erdman, P.E. and L.S.  
 Date: 4/27/96 Reg. No. 11442  
 My license will be renewed January 1, 1997

List Corners to be Indexed			
Corners	Section	Twp.	Range
Center	Sec. 5	95	12