

Chickasaw Co. Recorder
 Cindy Messersmith
Fee Book 2009-0916
 05/05/2009 @1234PM
 SCC SEC COR CERT
 Book: Page: # Pages: 1
 Total Fees: \$7.00

Herold - Recks Surveying, 25 1/2 East Main Street, Suite 204, New Hampton, IA 50659, Ph. 641-394-2725

UNITED STATES PUBLIC LAND SURVEY CORNER CERTIFICATE

Land Survey Monuments situated in Section 4, Township 95 North, Range 12 West of the Fifth Principal Meridian, Chickasaw County, Iowa. 1.) Not previously recorded in county recorder's office. 2.) Previously recorded in Bk.160, Pg.445 In the County Recorder's office.

This certificate is being prepared in compliance with Iowa Code Chapter 355.11 because:

- There is no certificate on file for this corner.
- There are no longer three valid ties of record.
- There are changes to reference ties of record.
- There is change of monumentation of record.
- To clarify description of record monument (ties).

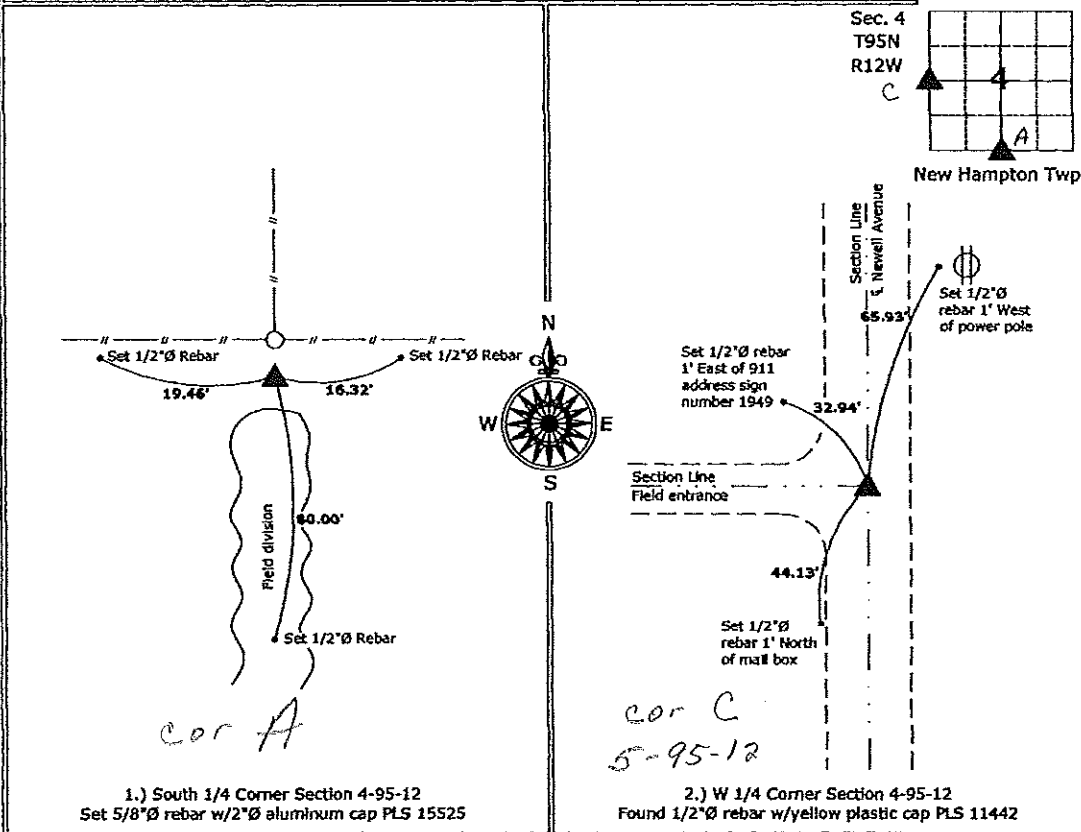
Monument Description and Remarks:

1.) South 1/4 Corner: Set 5/8"Ø rebar with 2"Ø aluminum cap PLS 15525 at an existing fence corner after comparing the position to adjacent corners in the section, there are no records of the perpetuation of a monument at this corner position.

2.) West 1/4 Corner: Fd 1/2"Ø rebar with yellow plastic cap PLS 11442, all of the previous ties were missing, added 3 new ties to update the corner.

PLAN - VIEW

(Show a minimum of three reference ties to durable physical objects, relevant monuments and physical conditions that will enable recovery of the corner.)



1.) South 1/4 Corner Section 4-95-12
 Set 5/8"Ø rebar w/2"Ø aluminum cap PLS 15525

2.) W 1/4 Corner Section 4-95-12
 Found 1/2"Ø rebar w/yellow plastic cap PLS 11442



I hereby certify that this land surveying document was prepared and the related survey work was performed by me or under my direct personal supervision and that I am a duly licensed Land Surveyor under the laws of the State of Iowa.

Paul R. Herold 5-5-09
 Paul R. Herold Date:
 License number 15525
 My license renewal date is December 31, 2010.
 Sheets covered by this seal: Individual sheet only

List Corners to be Indexed			
Corners	Section	Twp.	Range
S 1/4	4	95	12
W 1/4	4	95	12

Project Number: 2009-019

FB: Chickasaw County 1, Pgs. 1-10

File: S:_Projects\2009-019.dwg 5/5/2009 09:36:52

Section 5-95-12
As referred to in
Engr. T.C. Book

FILED 2005-2340
RECORDER'S OFFICE
CHICKASAW COUNTY, IOWA

2005 OCT 24 AM 10 16

CINDY MESSERSMITH
COUNTY RECORDER

TEKIPPE ENGINEERING, P.C., 128 South Vine Street, West Union, Iowa 52175 Phone (563) 422-5131

UNITED STATES PUBLIC LAND SURVEY CORNER CERTIFICATE

OF 5

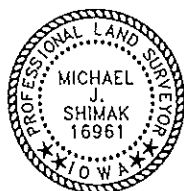
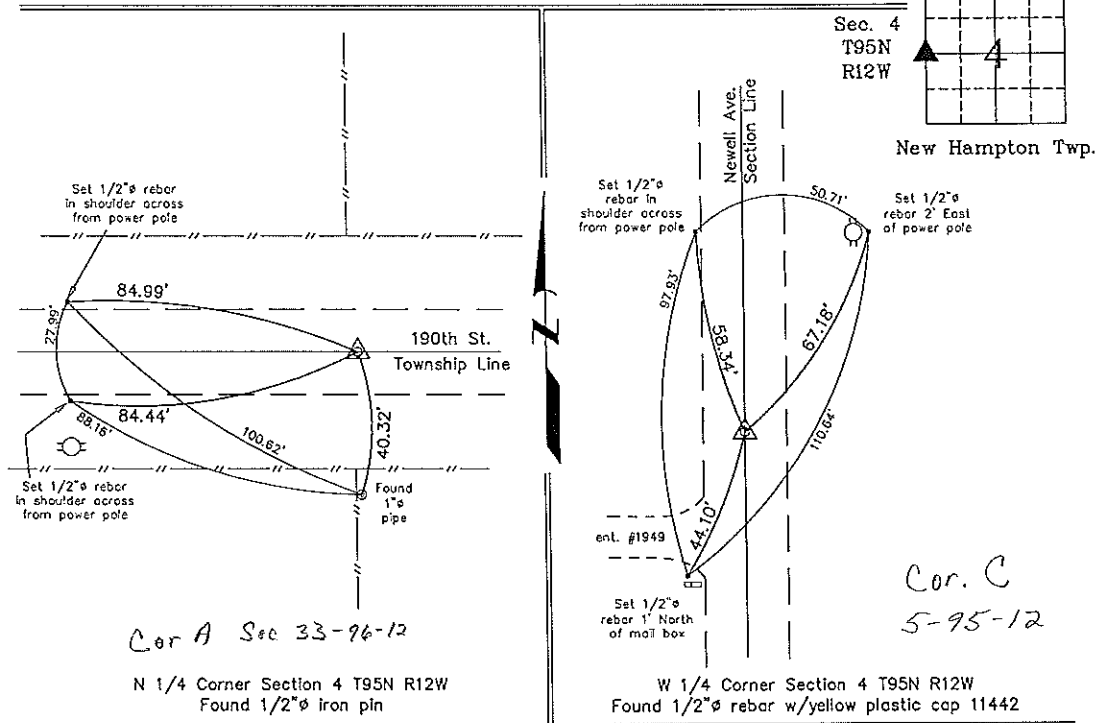
Land Survey Monuments situated in Section 4, Township 95 North, Range 12 West of the Fifth Principal Meridian, CHICKASAW County, Iowa. Previously recorded in (1) none (2) Bk. 160 Pg. 445 in County Recorder's Office. (book, page, document number, etc.)

(Show reason for preparing this certificate, the evidence and detailed procedures used in establishing the corner positions and monumentation found or placed.)

Monument Description and Remarks: (1) N 1/4 CORNER SECTION 4 T95N R12W: Found 1/2"Ø iron pin with information obtained from the Chickasaw County Engineer's Office in Field Book Jacksonville Twp. Corner Ties, Section 33-96-12, Corner 'A'. (2) W 1/4 CORNER SECTION 4 T95N R12W: Found 1/2"Ø rebar w/yellow plastic cap 11442 with information obtained from the previous Section Corner Certificate recorded in the Chickasaw County Recorder's Office in Book 160, Page 445, E 1/4 Corner, Section 5-95-12. All previous reference ties were missing. Added three reference ties.

PLAN - VIEW

(Show a minimum of three reference ties to durable physical objects, relevant monuments and physical conditions that will enable recovery of the corner.)



I hereby certify that this land surveying document was prepared and the related survey work was performed by me or under my direct personal supervision and that I am a duly licensed Land Surveyor under the laws of the State of Iowa.
Michael J. Shimak October 21, 2005
Michael J. Shimak Date
License number 16961
My license renewal date is December 31, 2005.
Sheets covered by this seal: Individual

List Corners to be Indexed			
Corners	Section	Twp.	Range
N 1/4	4	95N	12W
W 1/4	4	95N	12W

Project Number 05223.LS
FB, New Hampton #2 PG. 5-6
X:\Section Corners\Sec. 044-95-12ck.dwg

DOCUMENT No. 02063 FILED FOR RECORD THE 6th DAY OF MAY 1996 AT 11:27 BY Leitha N. Ross Recorder
 RECORDING FEE \$ 6.00 TRANSFER FEE \$ --- O'CLOCK A.M. BOOK 160 Deed PAGE 445 STATE OF IOWA, CHICKASAW COUNTY
 LEITHA N. ROSS Deputy

Prepared by: Erdman Engineering P.C. 708 Commerce Drive, P.O. Box 246, Decorah Iowa, 52101
 Phone (319)382-4194, Fax (319)382-3623

United States Public Land Survey Corner Certificate of

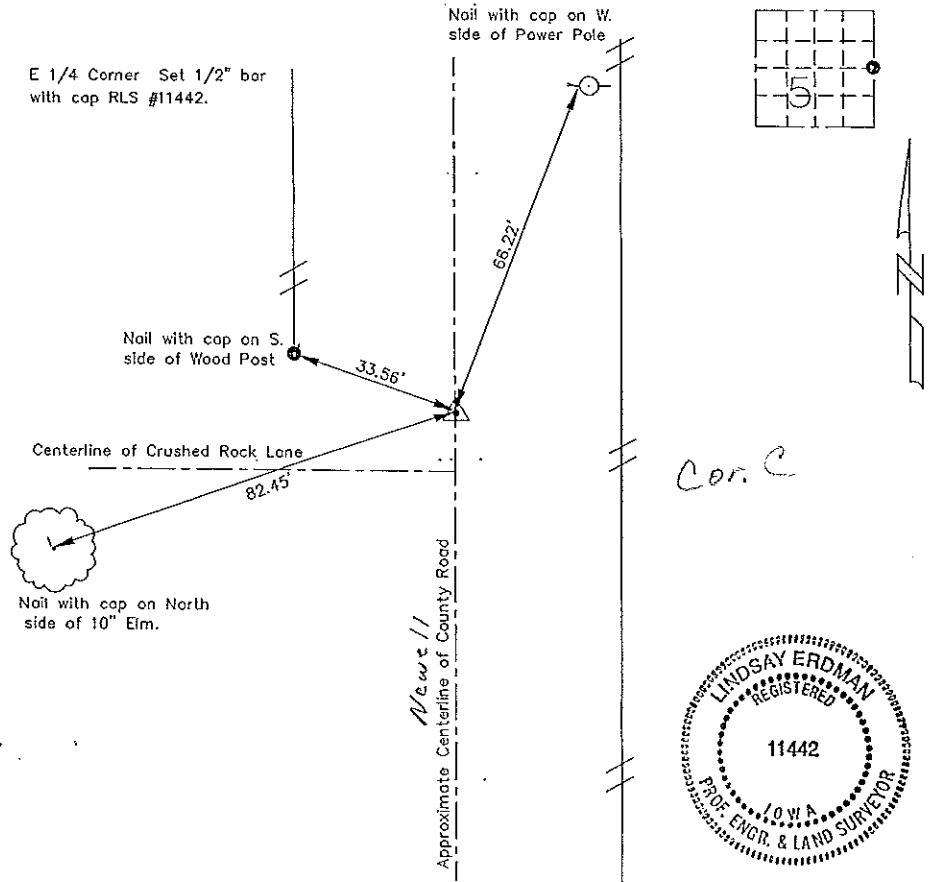
Land Survey Monuments situated in Section, 5 Township, 95 Range, 12 of the Fifth Principle Meridian,
Chickasaw County, Iowa. Previously recorded in does not apply in County Recorders Office.

(Show reason for preparing this certificate, the evidence and detailed procedures used in establishing the corner positions and monumentation found or placed.)

Monument Description and Remarks: This certificate is prepared in accordance with Section 355.11 of the 1995 Code of Iowa. No previous certificate has been filed for this corner location. County Engineer's Tie Records showed an iron pin had been set at the E 1/4 corner and ties had been taken to the iron pin, but no evidence of the ties or the iron pin were found remaining. Based on the information in these ties and a chain distance from the SE corner in the records we set a 1/2" bar with cap RLS #11442 2623.50' North of the SE corner by splitting the 66' ROW fences. We set this as the E 1/4 corner of Sec. 5-95-12.

Plan-View

(Show a minimum of three reference ties to durable physical objects, relevant monuments and physical conditions that will enable recovery of the corner.)



I hereby certify that the survey work was completed and this certificate was prepared by me or under my direct supervision and that I am a duly registered land surveyor under the laws of the State of Iowa.

Signature: Lindsay Erdman
 Lindsay Erdman, P.E. and L.S.

Date: 4/27/96 Reg. No. 11442

My license will be renewed January 1, 1997

Corners	Section	Twp.	Range
E 1/4	5	95	12