

DOCUMENT No. 02060 FILED FOR RECORD THE 6th DAY OF May 1996 AT 11:27 O'CLOCK A.M. BOOK 160 DEED PAGE 442

RECORDING FEE \$ 6.00 TRANSFER FEE \$ ---

STATE OF IOWA, CHICKASAW COUNTY
Leitha N. Ross Recorder
 LEITHA N. ROSS Deputy

Prepared by: Erdman Engineering P.C. 708 Commerce Drive, P.O. Box 246, Decorah Iowa, 52101
 Phone (319)382-4194, Fax (319)382-3623

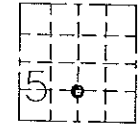
United States Public Land Survey Corner Certificate of

Land Survey Monuments situated in Section 5 Township 95 Range 12 of the Fifth Principle Meridian, Chickasaw County, Iowa. Previously recorded in does not apply in County Recorders Office.

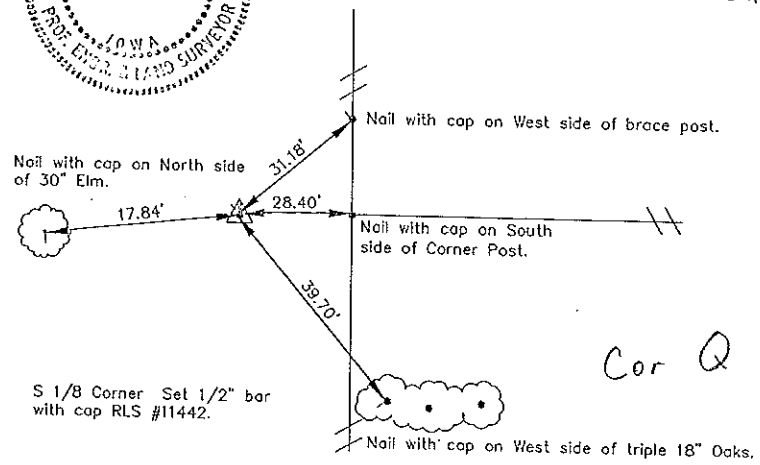
(Show reason for preparing this certificate, the evidence and detailed procedures used in establishing the corner positions and monumentation found or placed.)

Monument Description and Remarks: This certificate is prepared in accordance with Section 355.11 of the 1995 Code of Iowa. No previous certificate has been filed for this corner location. We set a 1/2" bar with cap RLS #11442 on line and midway between the Center Section and the S 1/4 Corners as the S 1/8 corner of Sec.5-95-12.

Plan-View
 (Show a minimum of three reference ties to durable physical objects, relevant monuments and physical conditions that will enable recovery of the corner.)



Cor. Q



Cor Q

I hereby certify that the survey work was completed and this certificate was prepared by me or under by direct supervision and that I am a duly registered land surveyor under the laws of the State of Iowa.

Signature *Lindsay Erdman*
 Lindsay Erdman, P.E. and L.S.

Date: 4/27/96 Reg. No. 11442

My license will be renewed January 1, 1997

Corners	List Section	Twp.	Range
S 1/8	5	95	12