

DOCUMENT NO. 02058 FILED FOR RECORD THE 6th DAY OF May STATE OF IOWA, CHICKASAW COUNTY.
 RECORDING FEE \$ 6.00 May 19 96 AT 11:27 By Lindsay Erdman Recorder
 TRANSFER FEE - \$ --- O'CLOCK A.M. BOOK 160 DEED PAGE 440 By LEITHA W. ROSS Deputy

Prepared by: Erdman Engineering P.C. 708 Commerce Drive, P.O. Box 246, Decora, Iowa, 52101
 Phone (319)382-4194, Fax (319)382-3623

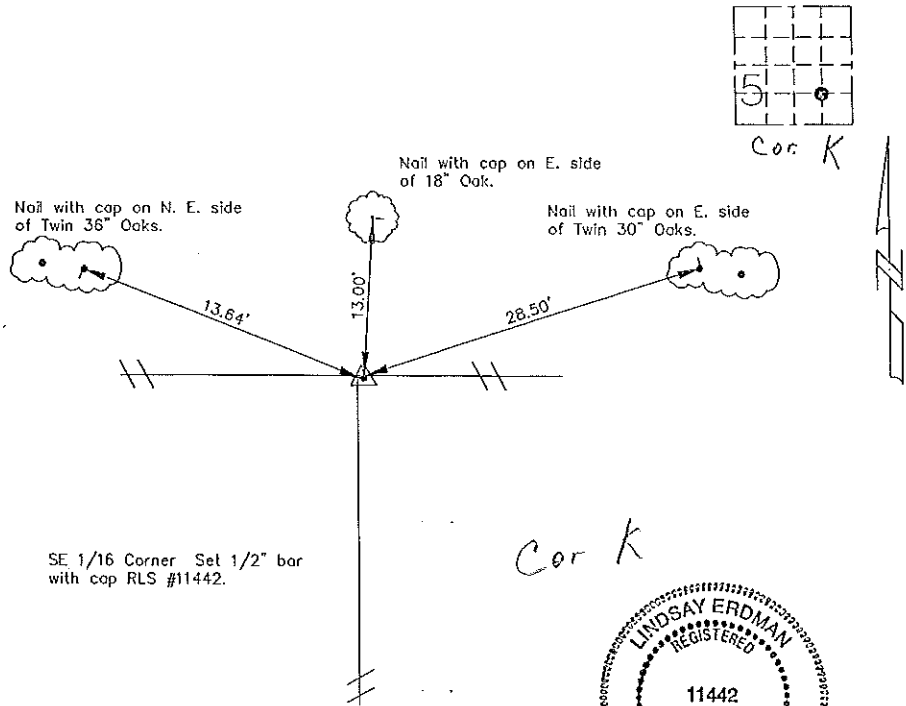
United States Public Land Survey Corner Certificate
 of

Land Survey Monuments situated in Section, 5 Township, 95 Range, 12 of the Fifth Principle Meridian,
Chickasaw County, Iowa. Previously recorded in does not apply in County Recorders Office.

(Show reason for preparing this certificate, the evidence and detailed procedures used in establishing the
 corner positions and monumentation found or placed.)

Monument Description and Remarks: This certificate is prepared in accordance with Section 355.11
 of the 1995 Code of Iowa. No previous certificate has been filed for this corner location. We set
 a 1/2" bar with cap RLS #11442 at the SE 1/16 corner of Sec. 5-95-12 at the intersection of a
 line from the ESE 1/8 to the S 1/8 and from the SSE 1/8 to the E 1/8. Monument location is very
 close to a fence intersection with fences running South, East and West.

Plan-View
 (Show a minimum of three reference ties to durable physical objects, relevant
 monuments and physical conditions that will enable recovery of the corner.)



I hereby certify that the survey work was completed
 and this certificate was prepared by me or under by
 direct supervision and that I am a duly registered
 land surveyor under the laws of the State of Iowa.

Signature: Lindsay Erdman
 Lindsay Erdman, P.E. and L.S.

Date: 4/27/96 Reg. No. 11442

My license will be renewed January 1, 1997

List Corners to be Indexed			
Corners	Section	Twp.	Range
SE 1/16	5	95	12