

FILED 2004 - 1594  
 RECORDER'S OFFICE  
 CHICKASAW COUNTY, IOWA  
*See #700*  
 2004 JUL 9 AM 8 48

CINDY MESSERSMITH  
 COUNTY RECORDER

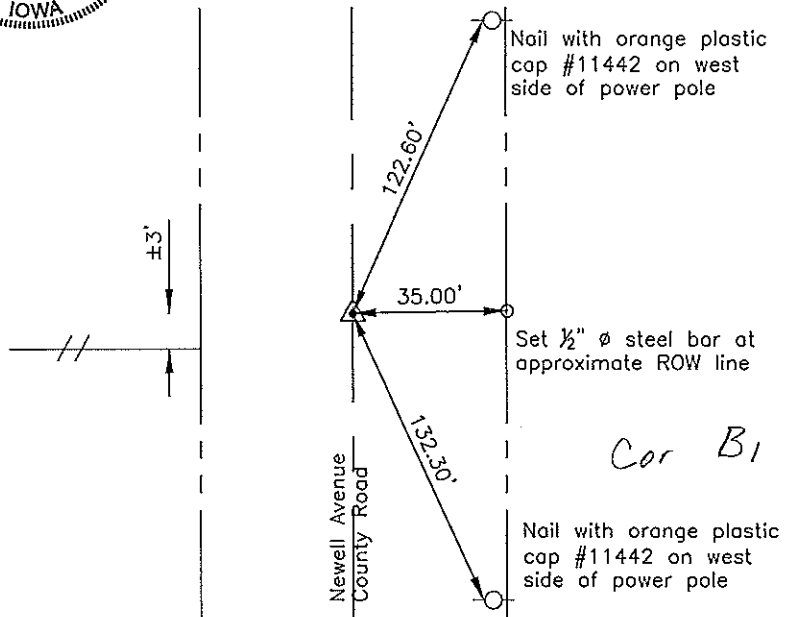
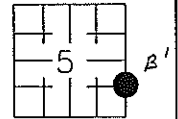
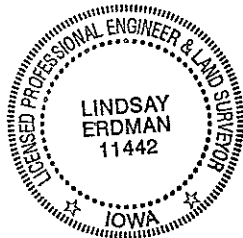
Prepared by: Erdman Engineering, P.C., 708 Commerce Drive, P.O. Box 246, Decorah, Iowa 52101 (563) 382-4194

United States Public Land Survey Corner Certificate  
 of

Land Survey Monuments situated in Section 5, Township 95, Range 12 West of  
 the 5th Principal Meridian in Chickasaw County, Iowa. Previously recorded in  
does not apply in the county Recorder's Office.

Monument Description and Remarks: This certificate is prepared in accordance with  
 Section 193C of the Code of Iowa. No previous certificate has been filed for this  
 corner location. We found no record of the ESE 1/8 Corner being set. We found no  
 evidence of a monument in the field other than the county road and a fence line  
 running west. We found the E 1/4 Corner and the SE Corner. From these monuments we  
 set a 1/2" diameter steel bar with yellow plastic cap #11442 on line and equidistant  
 between the E 1/4 Corner and the SE Corner as the ESE 1/8 Corner of Section 5, Township  
 95 North, Range 12 West.

Plan-View



I hereby certify that the survey work was completed and this certificate was prepared by me or under my direct supervision and that I am a duly registered land surveyor under the laws of the State of Iowa.

Signature *Lindsay Erdman*  
 Lindsay Erdman, P.E. and P.L.S., Iowa License Number 11442

Date: 7/2/04

My license renewal date is December 31, 2004

Corner(s) to be Indexed

Corner	Section	Township	Range
ESE 1/8	5	95	12