

DOCUMENT No. 02367 FILED FOR RECORD THE 12th DAY OF June 1996 AT 8:53 O'CLOCK A.M. BOOK 161 Deeds PAGE 129

STATE OF IOWA, CHICKASAW COUNTY  
*Leitha N. Ross* Recorder  
 LEITHA N. ROSS  
 By \_\_\_\_\_ Deputy

*Section 32-96-12  
 As referred to in  
 Engr. Tie Book*

Prepared by: Erdman Engineering P.C. 708 Commerce Drive, P.O. Box 246, Decatur Iowa, 52101  
 Phone (319)382-4194, Fax (319)382-3623

United States Public Land Survey Corner Certificate

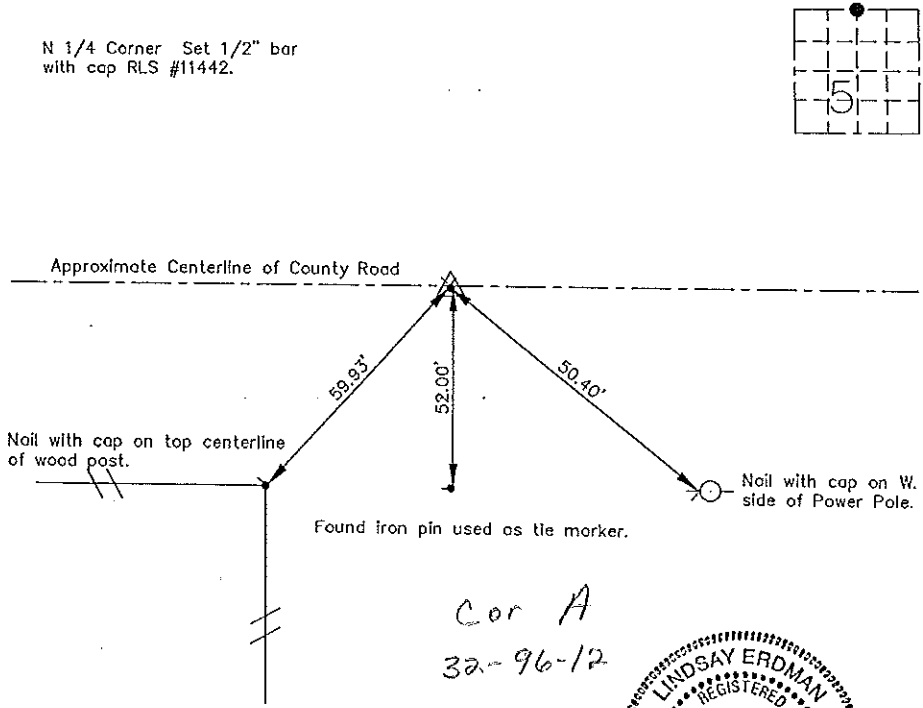
Land Survey Monuments situated in Section 32 of 96 Township 95 Range 12 of the Fifth Principle Meridian, Chickasaw County, Iowa. Previously recorded in does not apply in County Recorders Office.

(Show reason for preparing this certificate, the evidence and detailed procedures used in establishing the corner positions and monumentation found or placed.)

Monument Description and Remarks: This certificate is prepared in accordance with Section 355.11 of the 1995 Code of Iowa. No previous certificate has been filed for this corner location. We found monumentation at the NW corner and one iron pin used as a tie marker. Based on County Engineer's Random Chaining and Reference Tie Records we set a 1/2" bar with cap RLS #11442 2654.52' East of the NW corner and 52.00' North of the reference tie (iron pin) at the N 1/4 corner of Sec. 5-95-12.

Plan-View

(Show a minimum of three reference ties to durable physical objects, relevant monuments and physical conditions that will enable recovery of the corner.)



*Cor A  
 32-96-12*



I hereby certify that the survey work was completed and this certificate was prepared by me or under my direct supervision and that I am a duly registered land surveyor under the laws of the State of Iowa.

Signature: *Lindsay Erdman*  
 Lindsay Erdman, P.E. and L.S.  
 Date: 5/24/96 Reg. No. 11442  
 My license will be renewed January 1, 1997

List Corners to be Indexed			
Corners	Section	Twp.	Range
N 1/4	5	95	12