

Herold - Reicks Surveying, 10 East Main Street, New Hampton, IA 50659, Ph. 641-394-2725, Fax. 641-394-2710

UNITED STATES PUBLIC LAND SURVEY CORNER CERTIFICATE

32 96

Land Survey Monuments situated in Section 4, Township 95 North, Range 12 West of the Fifth Principal Meridian, Chickasaw County, Iowa. Previously recorded in Bk. 160, Pg. 416 in the County Recorder's office.

This certificate is being prepared in compliance with Iowa Code Chapter 355.11 because:

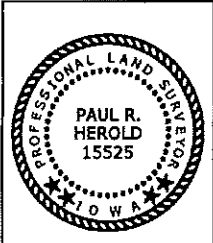
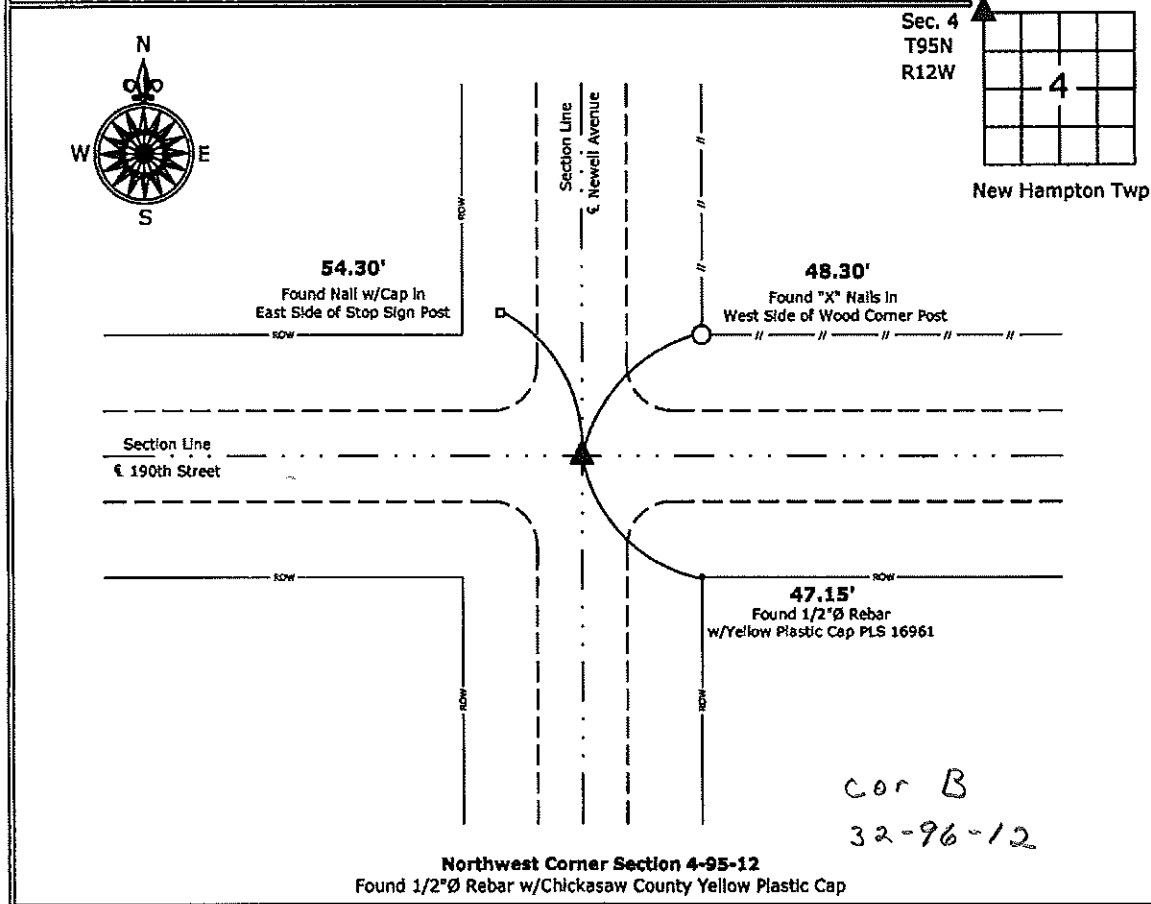
- There is no certificate on file for this corner.
- There are no longer three valid ties of record.
- There are changes to reference ties of record.
- There is change of monumentation of record.
- To clarify description of record monument (ties).

Monument Description and Remarks:

Northwest Corner: Found 1/2"Ø Rebar w/Chickasaw County Yellow Plastic Cap from previous Section Corner Certificate.

PLAN - VIEW

(Show a minimum of three reference ties to durable physical objects, relevant monuments and physical conditions that will enable recovery of the corner.)



I hereby certify that this land surveying document was prepared and the related survey work was performed by me or under my direct personal supervision and that I am a duly licensed Land Surveyor under the laws of the State of Iowa.

Paul R. Herold 12-29-10
 Paul R. Herold Date:
 License number 15525
 My license renewal date is December 31, 2010.
 Sheets covered by this seal: Individual sheet only

List Corners to be Indexed			
Corners	Section	Twp.	Range
NW	4	95	12

Project Number: 2010-171
 FB: Chickasaw County 2, Pg. 57

Section 32-96-12
 As referred to in
 Engr. Tie Book

DOCUMENT No. 02016 FILED FOR RECORD THE 1st DAY OF MAY 1996 AT 9:15 O'CLOCK A.M. BOOK 160 DEEDS PAGE 416
 RECORDING FEE \$ 6.00
 TRANSFER FEE \$ _____
 STATE OF IOWA, CHICKASAW COUNTY
Little H. Goss Recorder
David A. ... Deputy

Prepared by: Erdman Engineering P.C. 708 Commerce Drive, P.O. Box 246, Decorah Iowa, 52101
 Phone (319)382-4194, Fax (319)382-3623

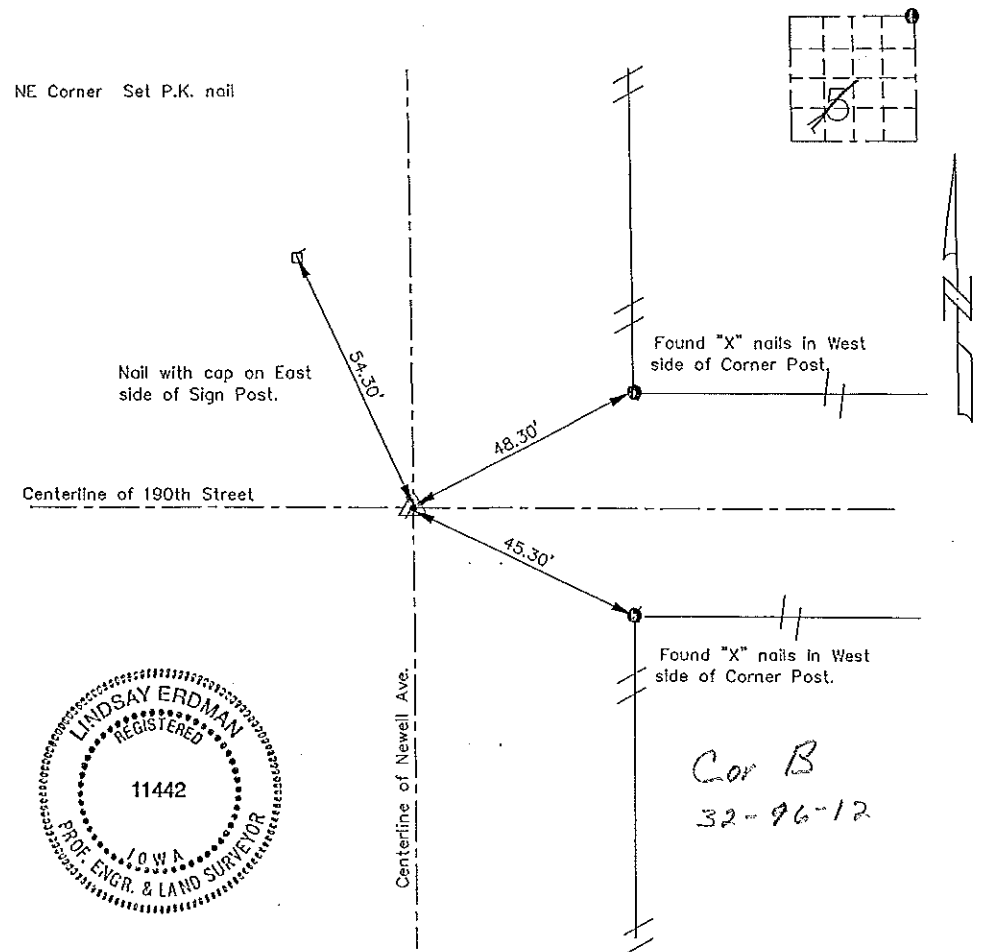
United States Public Land Survey Corner Certificate

Land Survey Monuments situated in Section 32 of 96
32 of 96
 Township, 95 Range, 12 of the Fifth Principle Meridian,
 Chickasaw County, Iowa. Previously recorded in does not apply in County Recorders Office.

(Show reason for preparing this certificate, the evidence and detailed procedures used in establishing the corner positions and monumentation found or placed.)

Monument Description and Remarks: This certificate is prepared in accordance with Section 355.11 of the 1995 Code of Iowa. No previous certificate has been filed for this corner location. Based on County Engineer's records we found two sets of "X" nails used as tie markers. From these tie markers we set a P.K. nail at the NE corner of Sec. 5-95-12

Plan-View
 (Show a minimum of three reference ties to durable physical objects, relevant monuments and physical conditions that will enable recovery of the corner.)



I hereby certify that the survey work was completed and this certificate was prepared by me or under by direct supervision and that I am a duly registered land surveyor under the laws of the State of Iowa.

Signature [Signature]
 Lindsay Erdman, P/E. and L.S.
 Date: 4/26/96 Reg. No. 11442

My license will be renewed January 1, 1997

Corners	List Corners to be Indexed		
	Section	Twp.	Range
NE	5	95	12