

Chickasaw Co. Recorder
 Cindy Messersmith
Fee Book 2008-1135
 06/12/2008 @0346PM
 SCC SEC COR CERT
 Book: Page: # Pages: 1
 Total Fees: \$7.00

Herold - Recks Surveying, 25 1/2 East Main Street, Suite 204, New Hampton, IA 50659, Ph. 641-994-2725

UNITED STATES PUBLIC LAND SURVEY CORNER CERTIFICATE

Land Survey Monuments situated in:
 Section **6**, Township **95** North, Range **12** West of the Fifth Principal Meridian, **Chickasaw**
 County, Iowa. Previously recorded in Book 156, Page 465 in the County Recorder's Office.

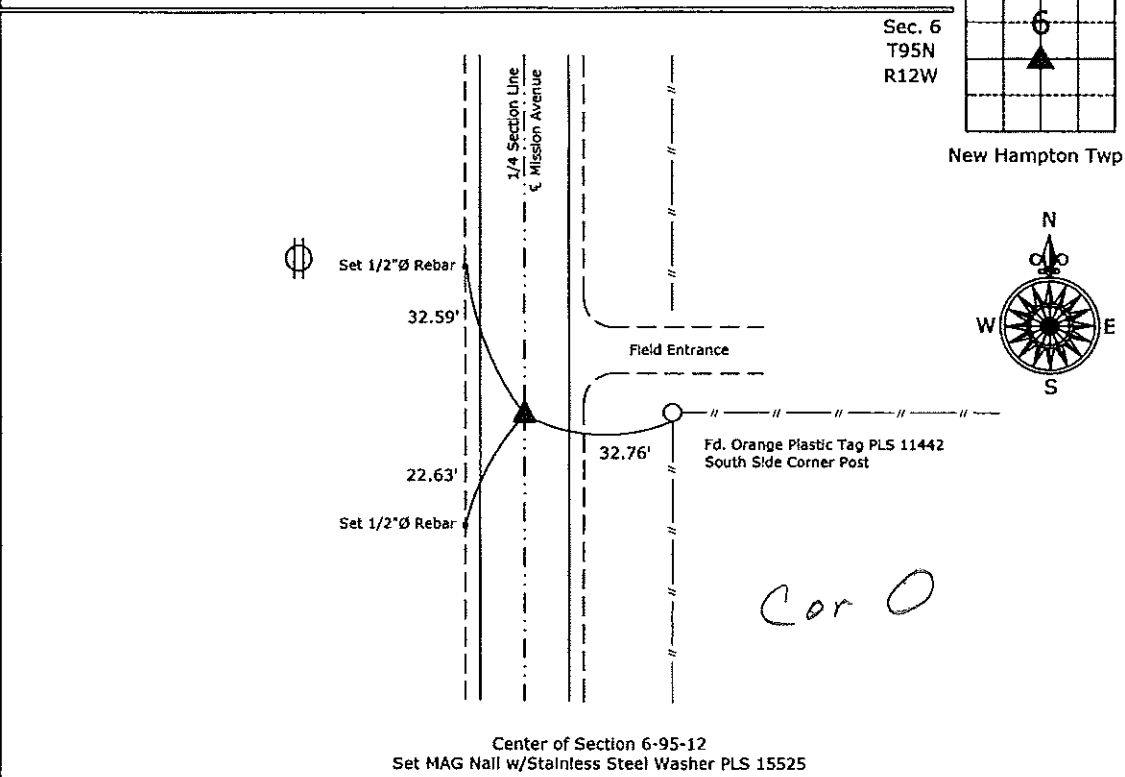
(Show reason for preparing this certificate, the evidence and detailed procedures used in establishing the corner positions and monumentation found or placed.)

Monument Description and Remarks:

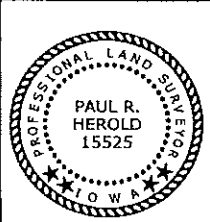
Center of Section 6-95-12; Set MAG Nail w/Stainless Steel Washer PLS 15525 from information on a survey and plat made by Paul R. Herold, recorded October 22, 2001, Doc. #2001-2291, on file in the Chickasaw County Recorder's Office, New Hampton, Iowa.

PLAN - VIEW

(Show a minimum of three reference ties to durable physical objects, relevant monuments and physical conditions that will enable recovery of the corner.)



Center of Section 6-95-12
 Set MAG Nail w/Stainless Steel Washer PLS 15525



I hereby certify that this land surveying document was prepared and the related survey work was performed by me or under my direct personal supervision and that I am a duly licensed Land Surveyor under the laws of the State of Iowa.

Paul R. Herold 6-12-08
 Paul R. Herold Date:
 License number 15525
 My license renewal date is December 31, 2008.
 Sheets covered by this seal: Individual sheet only

List Corners to be Indexed			
Corners	Section	Twp.	Range
Center	6	95	12

Project Number: 2008-053
 FB: Chickasaw County 1, Pgs. 70-71

File: S:\Projects\2008-053\wg\2008-053.dwg, 6/6/2008 5:27:15 PM

UNITED STATES PUBLIC LAND SURVEY CORNER CERTIFICATE

SLSI 9-90

OF

Land Survey Monuments situated in Section 6, Township 35N, Range 12W, of the Fifth Principal Meridian, Chickasaw County, Iowa. Previously recorded in does not apply in County Recorders Office. (book, page, document number, etc.)

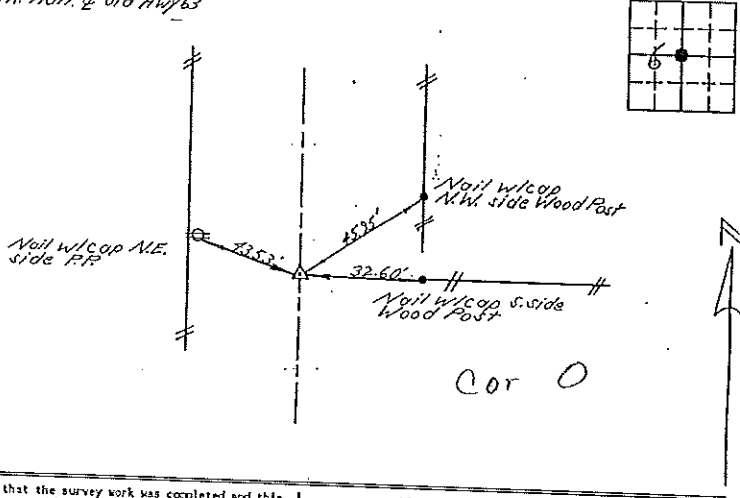
(Show reason for preparing this certificate, the evidence and detailed procedures used in establishing the corner positions and monumentation found or placed.)

Monument Description and Remarks: see below

PLAN - VIEW

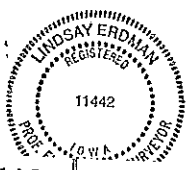
(Show a minimum of three reference ties to durable physical objects, relevant monuments and physical conditions that will enable recovery of the corner.)

C.S. Rd. RR. north of old Hwy 63



I hereby certify that the survey work was completed and this certificate was prepared by me or under my direct personal supervision and that I am a duly registered land surveyor under the laws of the State of Iowa.
 Signature: Lindsay Erdman
 Lindsay Erdman, P.E. & L.S.
 Date: 12-20-94 Reg. No. 11442
 My license will be renewed January 1, 1997.

Corner	List Corners to be Indexed	Section	Top.	Range.
C.S.	6	35		12



DOCUMENT No. 01169 FILED FOR RECORD THE 6th DAY OF January 1995 AT 9:39 P.M. STATE OF IOWA, CHICKASAW COUNTY.
 RECORDING FEE: 0.00 BY Lindsay N. Foss, Recorder
 TRANSFER FEE: 0.56 PAGE 465 LETHA N. FOSS
 # 99125 01071