

Section 6-95-12
 As referred to in
 Eng. Tie Book

XX DOCUMENT No. 02017 FILED FOR RECORD THE 1st DAY OF STATE OF IOWA, CHICKASAW COUNTY
 C RECORDING FEE \$ 6.00 May 19, 1996 AT 9:15 Debbie D. Ross Recorder
 M TRANSFER FEE \$ ----- O'CLOCK A.M. BOOK 160 DEEDS PAGE 417 Christy K. Sullivan Deputy

Prepared by: Erdman Engineering P.C. 708 Commerce Drive, P.O. Box 246, Decorah Iowa, 52101
 Phone (319)382-4194, Fax (319)382-3623

United States Public Land Survey Corner Certificate
 of

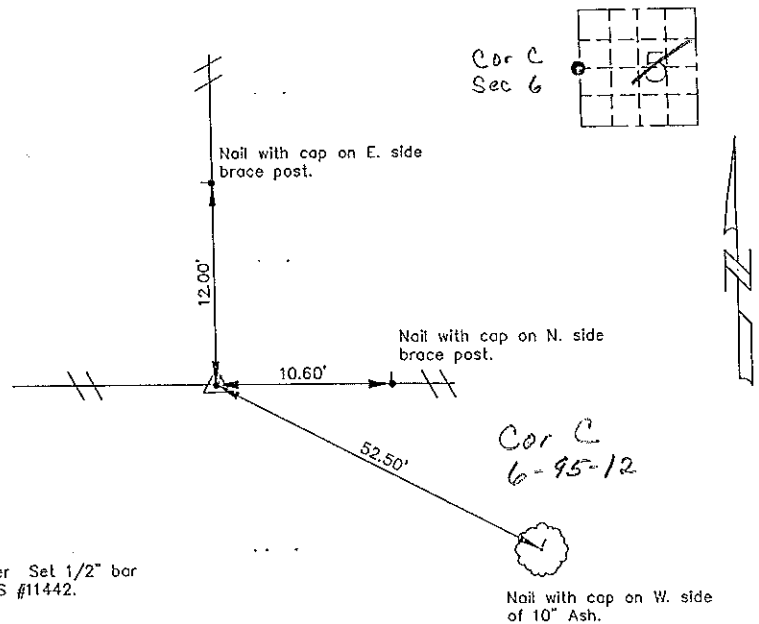
Land Survey Monuments situated in Section 5⁶ Township, 95 Range, 12 of the Fifth Principle Meridian,
Chickasaw County, Iowa. Previously recorded in does not apply in County Recorders Office.

(Show reason for preparing this certificate, the evidence and detailed procedures used in establishing the corner positions and monumentation found or placed.)

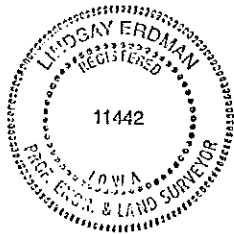
Monument Description and Remarks: This certificate is prepared in accordance with Section 355.11 of the 1995 Code of Iowa. No previous certificate has been filed for this corner location. We set a 1/2" bar with cap RLS #11442 at the existing fence corner as the W 1/4 corner of Sec. 5-95-12. Property line fences from this corner run North, East and West. No other evidence of the corner was found and no previous ties or county monumentation record was found.

Plan-View

(Show a minimum of three reference ties to durable physical objects, relevant monuments and physical conditions that will enable recovery of the corner.)



W 1/4 Corner Set 1/2" bar with cap RLS #11442.



I hereby certify that the survey work was completed and this certificate was prepared by me or under by direct supervision and that I am a duly registered land surveyor under the laws of the State of Iowa.

Signature Lindsay Erdman
 Lindsay Erdman, P.E. and L.S.

Date: 4/26/96 Reg. No. 11442

My license will be renewed January 1, 1997

List Corners to be Indexed			
Corners	Section	Twp.	Range
W 1/4	5	95	12