

UNITED STATES PUBLIC LAND SURVEY CORNER CERTIFICATE

OF 96

Land Survey Monuments situated in Section 6 31, Township 95 NORTH, Range 12 WEST, of the Fifth Principal Meridian, CHICKASAW County, Iowa. Previously recorded in NONE in County Recorder's Office.

(Show reason for preparing this certificate, the evidence and detailed procedures used in establishing the corner positions and monumentation found or placed.)

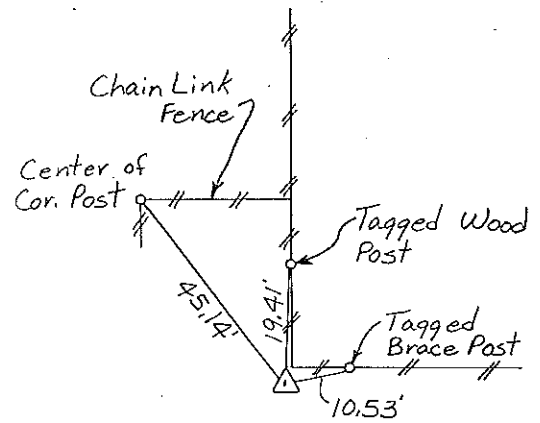
Monument Description and Remarks: N 1/4 CORNER, SECTION 6-T95N-R12W:

Found Conc. Mon. NW CORNER, NE 1/4-NE 1/4, SECTION 6-T 95N-R 12W: Set 1/2" Rebar w/cap Midway on Line between N 1/4 Corner & NE Corner of said Section.

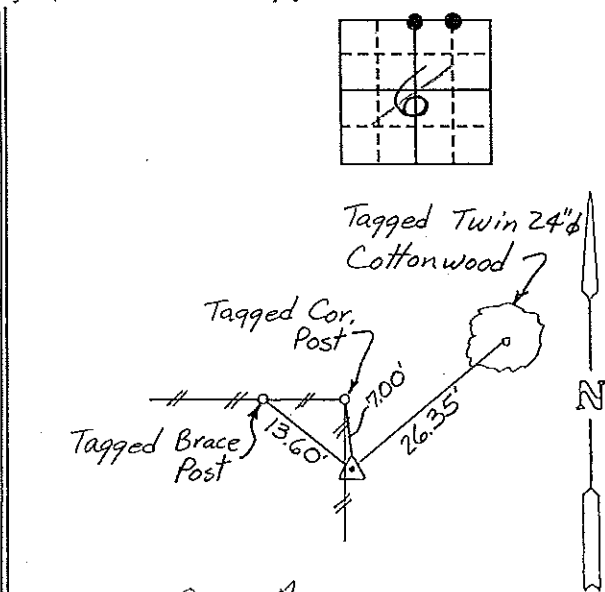
Section 31-96-12
As referred to in
Engg. Tlc Book

PLAN - VIEW

(Show a minimum of three reference ties to durable physical objects, relevant monuments and physical conditions that will enable recovery of the corner.)



Cor A
31-96-12



Cor A1
31-96-12

N 1/4 CORNER, SECTION 6-T95N-R12W NW CORNER NE 1/4-NE 1/4, SECTION 6-T95N-R12W

I hereby certify that the survey work was completed and this certificate was prepared by me or under my direct personal supervision and that I am a duly registered land surveyor under the laws of the state of Iowa.

Signature: Gary L. Casady
Name typed or printed: Gary L. Casady
Date: 11-3-93 Reg. No. 12532
My Registration Expires December 31, 1994



SEAL

Corners	Section	Twp	Range
N 1/4	6	95N	12W
Cor A	31-96-12		
NW Cor.			
NE 1/4-NE 1/4	6	95N	12W
Cor A	31-96-12		

Place on tie
Book 11/23/93