

Section 31-96-12
As referred to in
Engr. Tie Book

FILED 2001-1975
RECORDER'S OFFICE
CHICKASAW COUNTY, IOWA
2001 SEP 12 AM 9 02
CINDY MESSERSMITH
COUNTY RECORDER

TeKIPPE ENGINEERING, P.C., 128 South Vine Street, West Union, Iowa 52175 Phone (563) 422-6131

UNITED STATES PUBLIC LAND SURVEY CORNER CERTIFICATE

Land Survey Monuments situated in Section 8-31 OF 96
12 West of the Fifth Principal Meridian, CHICKASAW Township 95 North, Range
Previously recorded in Deeds Book 153, Page 303 in County Recorder's Office.
(book, page, document number, etc.)

(Show reason for preparing this certificate, the evidence and detailed procedures used in establishing the corner positions and monumentation found or placed.)

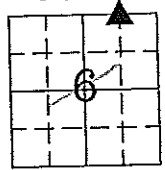
Monument Description and Remarks: NE Corner NW 1/4 - NE 1/4 Section 6 T95N R12W:
Found 1/2"Ø rebar w/orange plastic cap 12532 with information obtained from the
previous Section Corner Certificate recorded in the Chickasaw County Recorder's
Office in Deeds Book 153, Page 303. All previous reference ties were destroyed; three
reference ties were added.

PLAN - VIEW

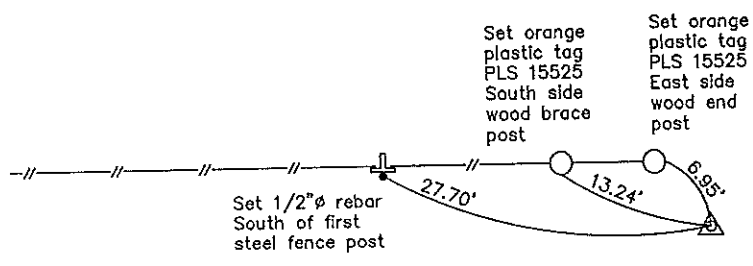
Project Number 0114815
FR. 461 PG. 27-28

(Show a minimum of three reference ties to durable physical objects, relevant monuments and physical conditions that will enable recovery of the corner.)

Sec. 6
T95N
R12W

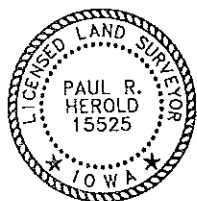


New Hampton Twp.



Cor A1
31-96-12

NE Corner NW 1/4 - NE 1/4 Section 6 T95N R12W
Found 1/2"Ø rebar w/orange plastic cap 12532



I hereby certify that this land surveying document was prepared and the related survey work was performed by me or under my direct personal supervision and that I am a duly licensed Land Surveyor under the laws of the State of Iowa.
Paul R. Herold 9-11-01
Paul R. Herold Date
license number 15525
My license renewal date is December 31, 2002.
Sheets covered by this seal: Individual

List Corners to be Indexed			
Corners	Section	Twp.	Range
NE-NW-NE	6	95N	12W

Filed 10-10-01

County Engineer's Copy

UNITED STATES PUBLIC LAND SURVEY CORNER CERTIFICATE

OF 96
Land Survey Monuments situated in Section 6 31, Township 95 NORTH, Range 12 WEST, of the Fifth Principal Meridian, CHICKASAW County, Iowa. Previously recorded in NONE in County Recorder's Office.

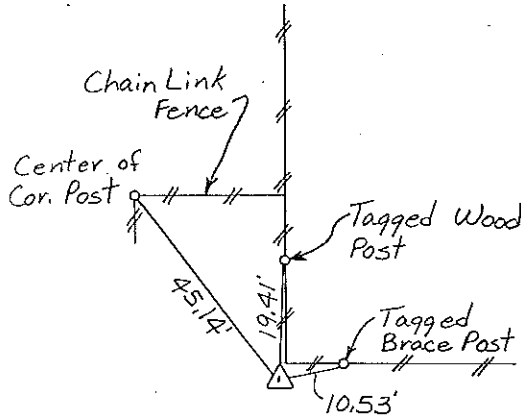
(Show reason for preparing this certificate, the evidence and detailed procedures used in establishing the corner positions and monumentation found or placed.)

Monument Description and Remarks: N 1/4 CORNER, SECTION 6-T95N-R12W:
Found Conc. Mon.
NW CORNER, NE 1/4-NE 1/4, SECTION 6-T95N-R12W: Set
1/2" Rebar w/cap Midway on Line between N 1/4 Corner
& NE Corner of said Section.

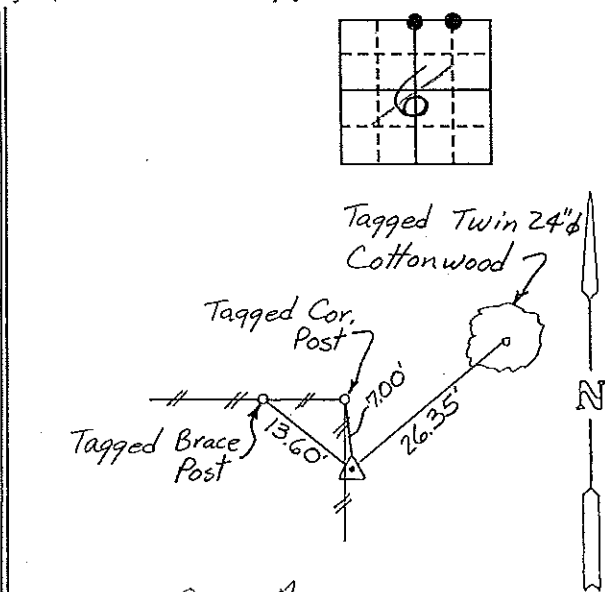
Section 31-96-12
As referred to in
Engg. Tlc Book

PLAN - VIEW

(Show a minimum of three reference ties to durable physical objects, relevant monuments and physical conditions that will enable recovery of the corner.)



Cor A
31-96-12



Cor A1
31-96-12

N 1/4 CORNER, SECTION 6-T95N-R12W NW CORNER NE 1/4-NE 1/4, SECTION 6-T95N-R12W

I hereby certify that the survey work was completed and this certificate was prepared by me or under my direct personal supervision and that I am a duly registered land surveyor under the laws of the state of Iowa.

Signature: Gary L. Casady
Name typed or printed: Gary L. Casady
Date: 11-3-93 Reg. No. 12532
My Registration Expires December 31, 1994



SEAL

List Corners to be Indexed
Corners Section Twp Range
N 1/4 6 95N 12W
Cor A 31-96-12
NW Cor.
NE 1/4-NE 1/4 6 95N 12W
Cor A, 31-96-12
Place on tie
Book 11/23/93