

Section 31-96-12  
 AS referred to in  
 Engr. The Book

TEKIPPE ENGINEERING, P.C., 128 South Vine Street, West Union, Iowa 52175 Phone (319) 422-5131

UNITED STATES PUBLIC LAND SURVEY CORNER CERTIFICATE

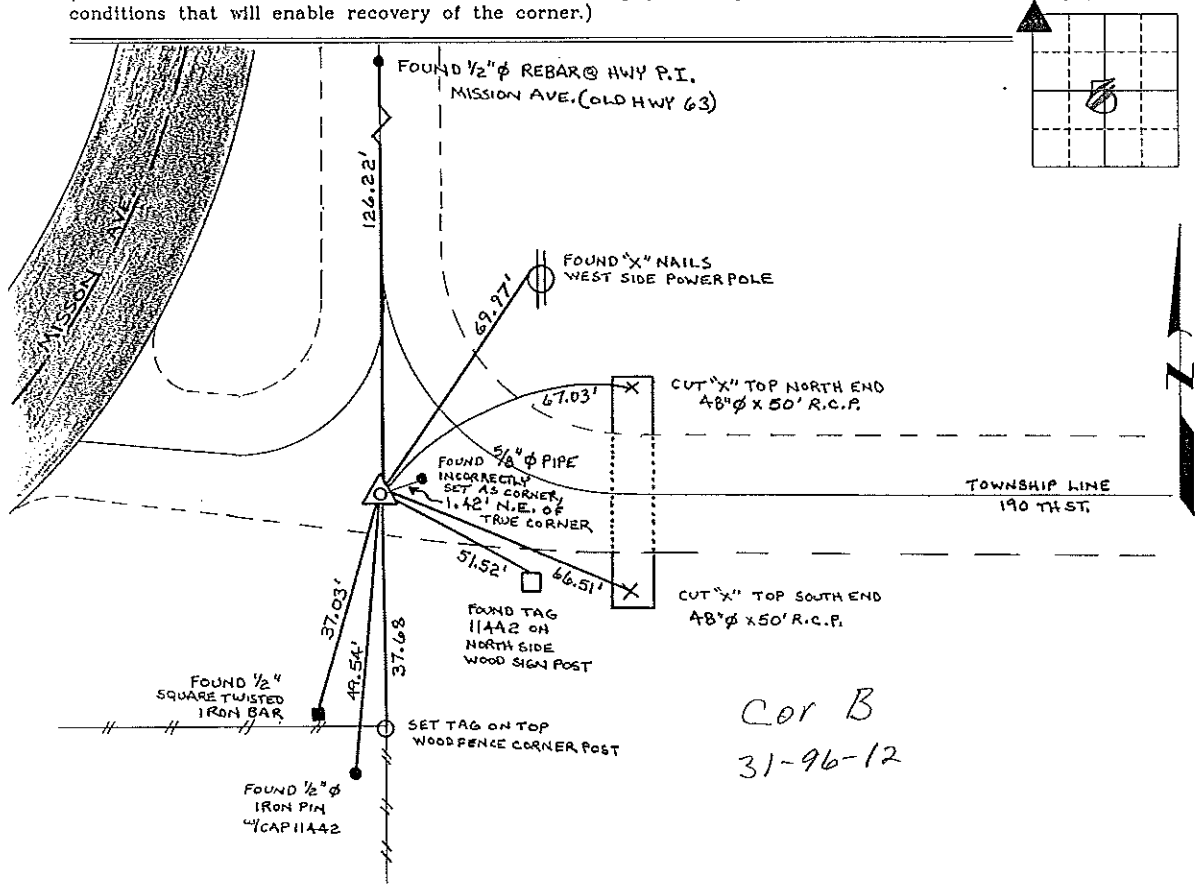
OF  
 Land Survey Monuments situated in Section 5<sup>31</sup>, Township 95<sup>96</sup> North, Range 12 West, of the Fifth Principal Meridian, Chickasaw County, Iowa. Previously recorded in Deeds Book 153, Page 304 & Deeds Book 180, Page 415 in County Recorder's Office. (book, page, document number, etc.)

(Show reason for preparing this certificate, the evidence and detailed procedures used in establishing the corner positions and monumentation found or placed.)

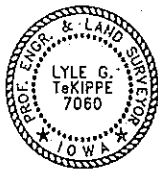
Monument Description and Remarks: NW COR. SECTION 5 T95N R12W: Found 4" x 4" concrete monument, shown as set, on a Cornerstone Survey Plat made by John D. Franklin, signed August 31, 1959, copy obtained from the Iowa D.O.T. Office of Plans, Ames, Iowa. The remaining ties to this corner check with those on the I.D.O.T. Plat, and they match the ties obtained from the County Engineer's Office. A Section Corner Certificate for this same corner made by Gary Casady, recorded November 23, 1993, in Deeds Book 153, Page 304, is on file, however a Section Corner Certificate was later made by Lindsay Erdman, recorded May 1, 1996, in Deeds Book 180, Page 415. Those ties are to a 5/8" pipe located 1.42 feet Northeast of the true corner. The pipe is incorrect and is to be ignored.

PLAN - VIEW

(Show a minimum of three reference ties to durable physical objects, relevant monuments and physical conditions that will enable recovery of the corner.)



Cor B  
 31-96-12



I hereby certify that this land surveying document was prepared and the related survey work was performed by me or under my direct personal supervision and that I am a duly licensed Land Surveyor under the laws of the State of Iowa.  
*Lyle G. Tekippe* 1-31-97  
 Lyle G. Tekippe Date  
 License number 7060  
 My license renewal date is December 31, 1998.  
 Sheets covered by this seal: Individual

List Corners to be Indexed			
Corners	Section	Twp.	Range
NW	5	95 N	12 W
Corner B 31-96-12			
Place in tie Book			
2/18/97			
JFM			

"County Engineer's Copy"

X DOCUMENT No. 02015 FILED FOR RECORD THE 1st DAY OF May STATE OF IOWA, CHICKASAW COUNTY  
 RECORDING FEE \$ 6.00 May 19 96 AT 9:15 Keith H. Ross Recorder  
 TRANSFER FEE - \$ ----- O'CLOCK A.M. BOOK 160 Deeds PAGE 415 Lindsay Erdman Deputy

Prepared by: Erdman Engineering P.C. 708 Commerce Drive, P.O. Box 246, Decorah Iowa, 52101  
 Phone (319)382-4194, Fax (319)382-3623

United States Public Land Survey Corner Certificate

Land Survey Monuments situated in Section 5 of 96 Township 95 Range 12 of the Fifth Principle Meridian, Chickasaw County, Iowa. Previously recorded in does not apply in County Recorders Office.

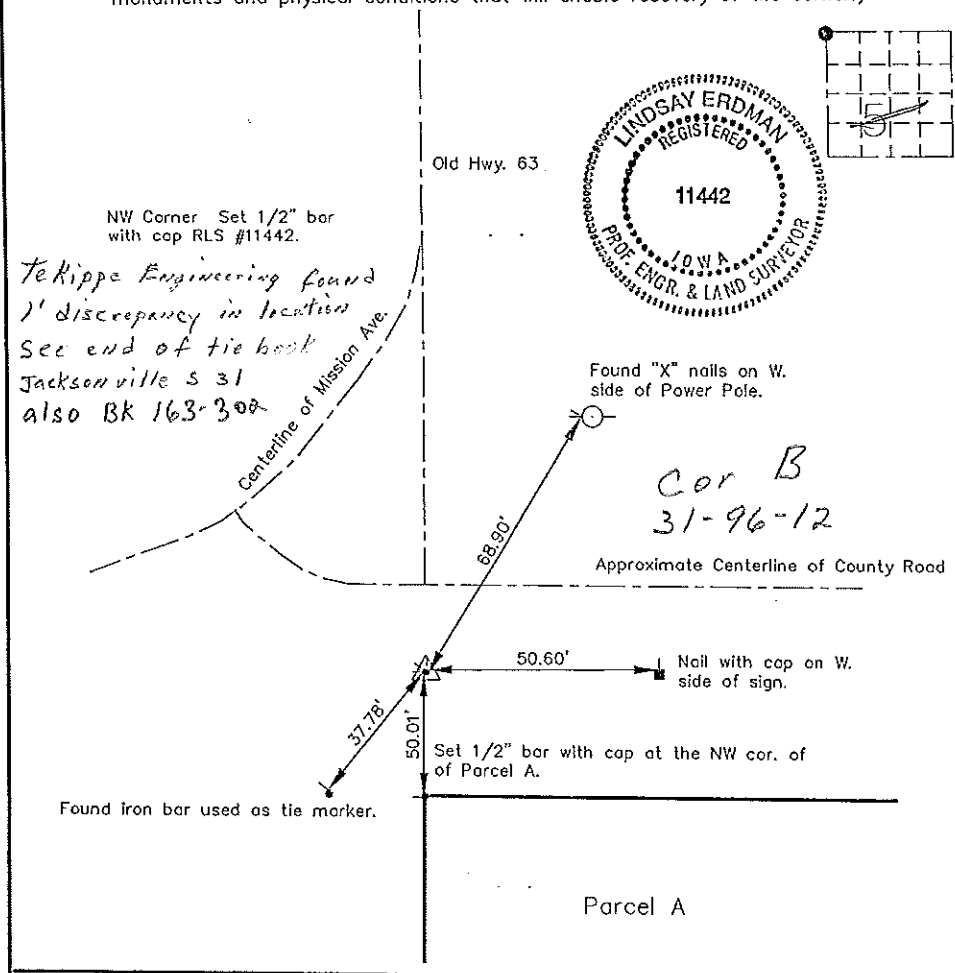
(Show reason for preparing this certificate, the evidence and detailed procedures used in establishing the corner positions and monumentation found or placed.)

Monument Description and Remarks: This certificate is prepared in accordance with Section 355.11 of the 1995 Code of Iowa. No previous certificate has been filed for this corner location. Based on County Engineer's reference ties we found "X" nails in a power pole and an iron bar used as tie markers. From these tie markers we found a 5/8" pipe described as the NW cor. of Sec. 5-95-12.

Section 31-96-12  
 As referred to in  
 Engg Tie Book.

Plan-View

(Show a minimum of three reference ties to durable physical objects, relevant monuments and physical conditions that will enable recovery of the corner.)



I hereby certify that the survey work was completed and this certificate was prepared by me or under by direct supervision and that I am a duly registered land surveyor under the laws of the State of Iowa.

Signature Lindsay Erdman  
 Lindsay Erdman, P.E. and L.S.  
 Date: 7/26/96 Reg. No. 11442  
 My license will be renewed January 1, 1997

List Corners to be Indexed			
Corners	Section	Twp.	Range
NW	5	95	12

BOOK 160 PAGE 415

UNITED STATES PUBLIC LAND SURVEY CORNER CERTIFICATE

OF 96  
Land Survey Monuments situated in Section 6 31, Township 95 NORTH, Range 12 WEST, of the Fifth Principal Meridian, CHICKASAW County, Iowa.  
Previously recorded in NONE in County Recorder's Office.  
(book, page, document number, etc.)

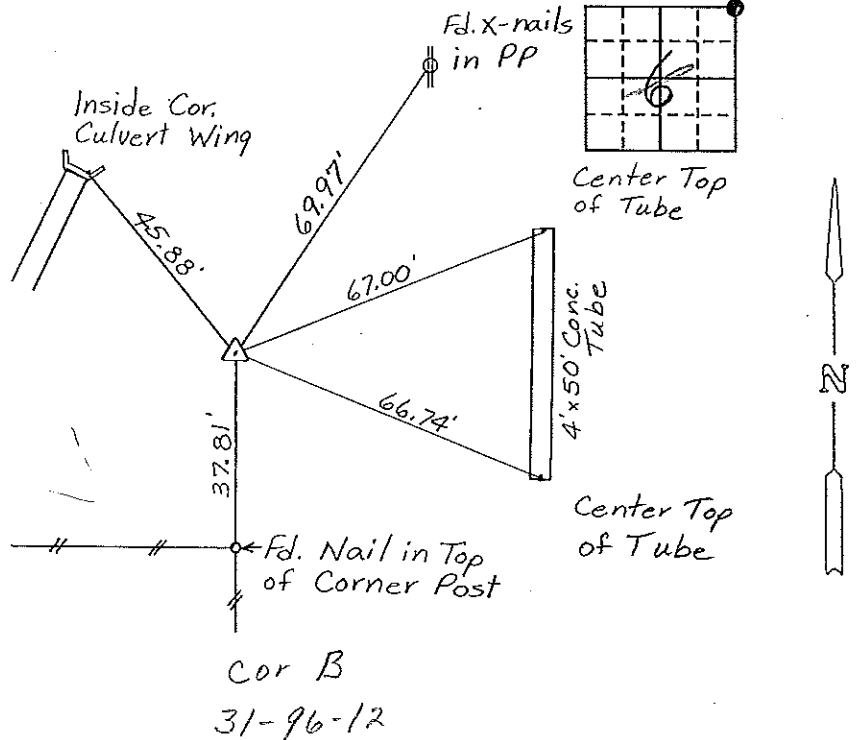
(Show reason for preparing this certificate, the evidence and detailed procedures used in establishing the corner positions and monumentation found or placed.)

Monument Description and Remarks: NE CORNER, SECTION 6-T95N-R12W:  
Found Concrete Mon.

PLAN - VIEW

(Show a minimum of three reference ties to durable physical objects, relevant monuments and physical conditions that will enable recovery of the corner.)

Section 31-96-12  
As referred to in  
Engs. Tie Book



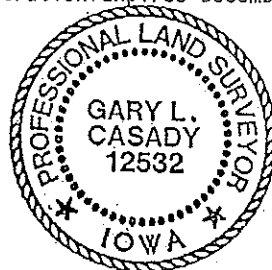
NE Corner, Section 6-T95N-R12W

I hereby certify that the survey work was completed and this certificate was prepared by me or under my direct personal supervision and that I am a duly registered land surveyor under the laws of the state of Iowa.

Signature: Gary L. Casady  
Name typed or printed: Gary L. Casady  
Date: 11-3-93 Reg. No. 12532  
My Registration Expires December 31, 1994

Corners	List Corners to be Indexed Section	Twp	Range
NE	6	95N	12W
Cor. B	31-96-12		

Placed in  
tie book 11/24/93



SEAL