

DOCUMENT No. **00698** FILED FOR RECORD THE 30th DAY OF September 1998 AT 8:30 O'CLOCK A. M. BOOK 169 DEEDS PAGE 71

RECORDING FEE \$ 6.00 TRANSFER FEE \$ ---

STATE OF IOWA, CHICKASAW COUNTY. By Lyle G. TeKippe Recorder LEITHA N. ROSS Deputy

TeKIPPE ENGINEERING, P.C., 128 South Vine Street, West Union, Iowa 52175 Phone (319) 422-6131

UNITED STATES PUBLIC LAND SURVEY CORNER CERTIFICATE

OF

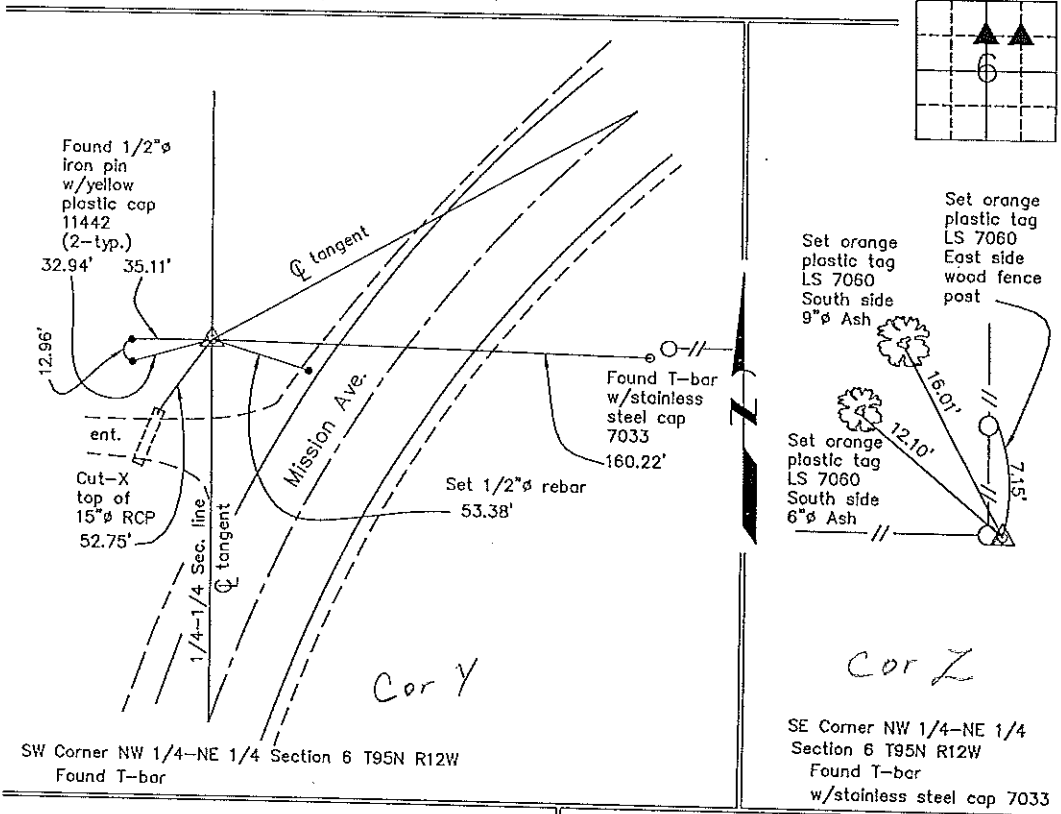
Land Survey Monuments situated in Section 6, Township 95 North, Range 12 West, of the Fifth Principal Meridian, CHICKASAW County, Iowa. Previously recorded in none in County Recorder's Office. (book, page, document number, etc.)

(Show reason for preparing this certificate, the evidence and detailed procedures used in establishing the corner positions and monumentation found or placed.)

Monument Description and Remarks: SW Corner NW 1/4-NE 1/4 Section 6 T95N R12W: Found T-bar with information obtained from a Survey and Plat made by Lindsay Erdman and recorded in the County Recorder's Office on December 14, 1994, in Deed Book 156, Pages 294-295. SE Corner NW 1/4-NE 1/4 Section 6 T95N R12W: Found T-bar w/stainless steel cap 7033 with information obtained from a Survey and Plat made by Harold Blessing and recorded in the County Recorder's Office on August 22, 1973, in Deed Book 106, Pages 142-151.

PLAN - VIEW

(Show a minimum of three reference ties to durable physical objects, relevant monuments and physical conditions that will enable recovery of the corner.)



I hereby certify that this land surveying document was prepared and the related survey work was performed by me or under my direct personal supervision and that I am a duly licensed Land Surveyor under the laws of the State of Iowa.

Lyle G. TeKippe 9-29-98
 Lyle G. TeKippe Date
 License number 7060
 My license renewal date is December 31, 1998.
 Sheets covered by this seal: Individual



List Corners to be Indexed			
Corners	Section	Twp.	Range
SW-NW-NE	6	95N	12W
SE-NW-NE	6	95N	12W