

TeKIPPE ENGINEERING, P.C., 128 South Vine Street, West Union, Iowa 52175 Phone (563) 422-5131

UNITED STATES PUBLIC LAND SURVEY CORNER CERTIFICATE

OF

Land Survey Monuments situated in Section 7, Township 95 North, Range 12 West of the Fifth Principal Meridian, CHICKASAW County, Iowa.
 Previously recorded in (1) Bk. 148 Pg. 136 (2) Document 2001-1717 in County Recorder's Office.
 (book, page, document number, etc.)

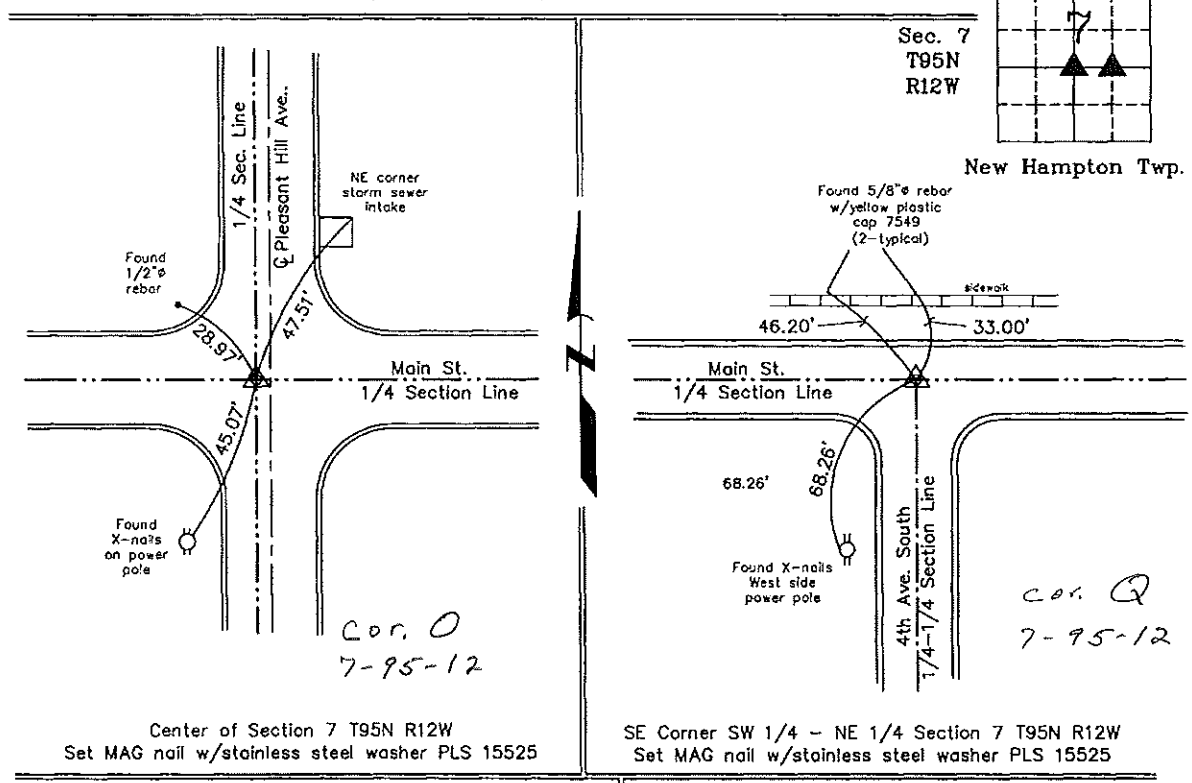
(Show reason for preparing this certificate, the evidence and detailed procedures used in establishing the corner positions and monumentation found or placed.)

Monument Description and Remarks: (1) Center of Section 7 T95N R12W: Set MAG nail w/stainless steel washer PLS 15525. Previous monument as recorded in Book 148, Page 136 was covered by the resurfacing of Main Street.

(2) SE Corner SW 1/4 - NE 1/4 Section 7 T95N R12W: Set MAG nail w/stainless steel washer PLS 15525. Previous monument as recorded in Document #2001-1717 was covered by the resurfacing of Main Street. NOTE: Both monuments were set using the reference ties from the previous Section Corner Certificates.

PLAN - VIEW

(Show a minimum of three reference ties to durable physical objects, relevant monuments and physical conditions that will enable recovery of the corner.)



I hereby certify that this land surveying document was prepared and the related survey work was performed by me or under my direct personal supervision and that I am a duly licensed Land Surveyor under the laws of the State of Iowa.

PAUL R. HEROLD
 15525
Paul R. Herold 1-24-05
 Paul R. Herold Date
 License number 15525
 My license renewal date is December 31, 2004.
 Sheets covered by this seal: Individual

List Corners to be Indexed			
Corners	Section	Twp.	Range
Center	7	95N	12W
SE-SW-NE	7	95N	12W

FILED 2001-1717
RECORDER'S OFFICE
CHICKASAW COUNTY, IOWA

2001 AUG 14 AM 9.54

CINDY MESSERSMITH
COUNTY RECORDER

TeKIPPE ENGINEERING, P.C., 128 South Vine Street, West Union, Iowa 52176 Phone (563) 422-5191

UNITED STATES PUBLIC LAND SURVEY CORNER CERTIFICATE

OF

Land Survey Monuments situated in Section 7, Township 95 North, Range 12 West of the Fifth Principal Meridian, CHICKASAW County, Iowa. Previously recorded in Book 148, Page 134 in County Recorder's Office.
(book, page, document number, etc.)

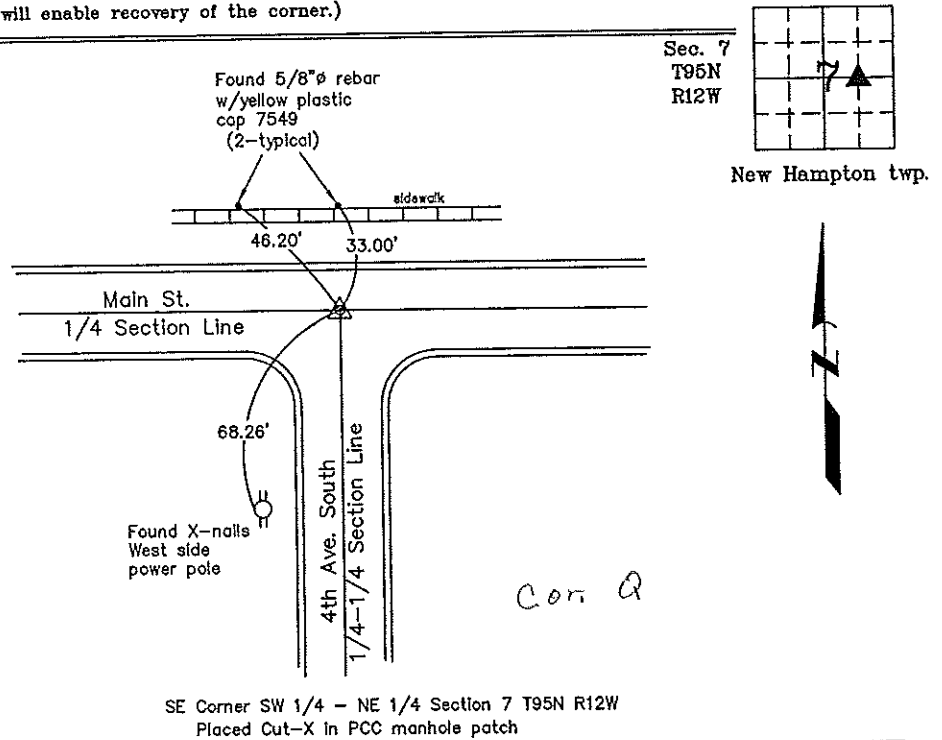
(Show reason for preparing this certificate, the evidence and detailed procedures used in establishing the corner positions and monumentation found or placed.)

Monument Description and Remarks: SE Corner SW 1/4 - NE 1/4 Section 7 T95N R12W:
Placed cut-X in PCC manhole patch using reference ties obtained from the previous
Section Corner Certificate recorded in the Chickasaw County Recorder's Office on
October 16, 1991 in Book 148, Page 134.

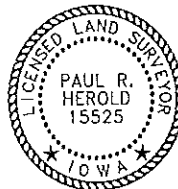
PLAN - VIEW

Project Number 01115.1S
FR New Hampton 1 PG. 16-21

(Show a minimum of three reference ties to durable physical objects, relevant monuments and physical conditions that will enable recovery of the corner.)



SE Corner SW 1/4 - NE 1/4 Section 7 T95N R12W
Placed Cut-X in PCC manhole patch



I hereby certify that this land surveying document was prepared and the related survey work was performed by me or under my direct personal supervision and that I am a duly licensed Land Surveyor under the laws of the State of Iowa.

Paul R. Herold 8-13-01
Paul R. Herold Date
License number 15525
My license renewal date is December 31, 2002.
Sheets covered by this seal Individual

Corners	List Corners to be Indexed		
	Section	Twp.	Range
SE-SW-NE	7	95N	12W

File 10-10-01

County Engineer's Copy

UNITED STATES PUBLIC LAND SURVEY CORNER CERTIFICATE

OF

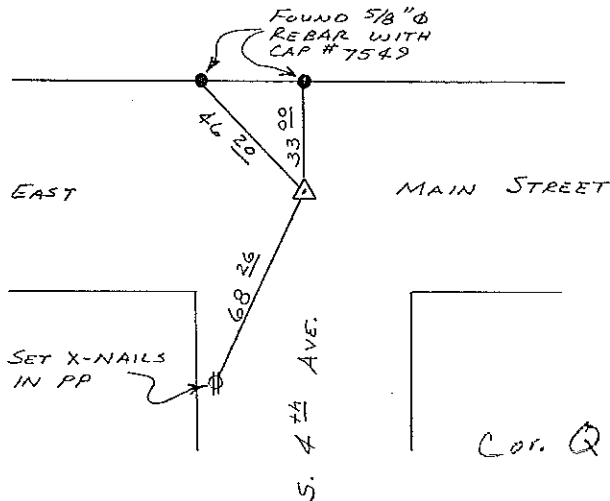
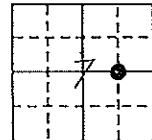
Land Survey Monuments situated in Section 7, Township 95N, Range 12W, of the Fifth Principal Meridian, CHICKASAW County, Iowa. Previously recorded in (NONE) in County Recorder's Office.

(Show reason for preparing this certificate, the evidence and detailed procedures used in establishing the corner positions and monumentation found or placed.)

Monument Description and Remarks: USED TEMPORARY POINT ON MANHOLE.
CORNER IS 33.00' SOUTH OF FOUND 5/8" Ø REBAR W/CAP #7549

PLAN - VIEW

(Show a minimum of three reference ties to durable physical objects, relevant monuments and physical conditions that will enable recovery of the corner.)

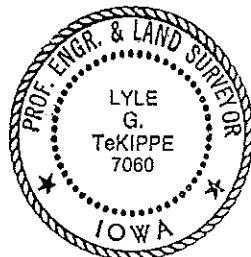


SE CORNER SW 1/4-NE 1/4
SECTION 7 - T95N - R12W

I hereby certify that the survey work was completed and this certificate was prepared by me or under my direct personal supervision and that I am a duly registered land surveyor under the laws of the state of Iowa.

Signature: Lyle G. TeKippe
Name typed or printed: Lyle G. TeKippe
Date: 10-15-91 Reg. No. 7060

Comers	List Corners to be Indexed Section	Twp	Range
SE CORNER SW 1/4-NE 1/4	7	95N	12W



SEAL

*Placed in
Tri Book 10/15/91*