

UNITED STATES PUBLIC LAND SURVEY CORNER CERTIFICATE

OF

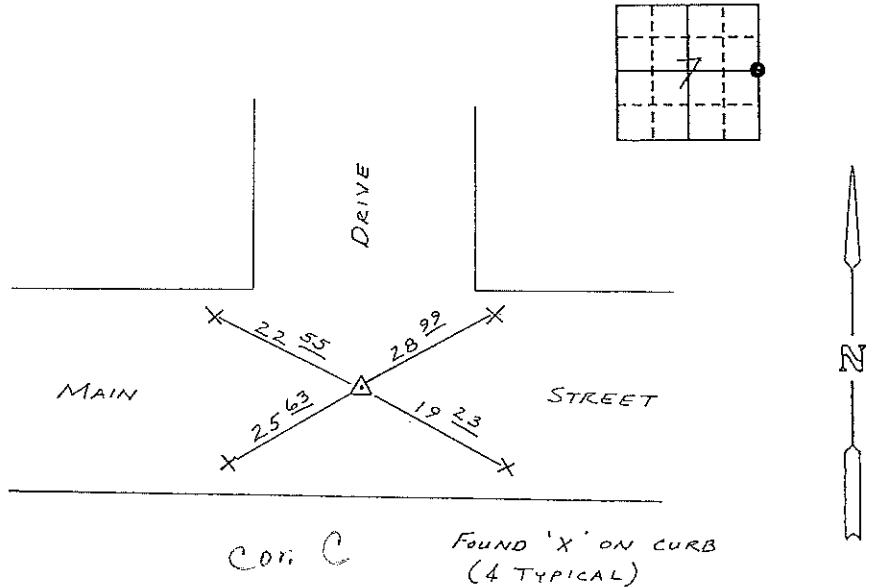
Land Survey Monuments situated in Section 7, Township 95N, Range 12W, of the Fifth Principal Meridian, CHICKASAW County, Iowa. Previously recorded in (NONE) in County Recorder's Office.

(Show reason for preparing this certificate, the evidence and detailed procedures used in establishing the corner positions and monumentation found or placed.)

Monument Description and Remarks: FOUND I.D.O.T. ALUMINUM CAP IN PAVEMENT.

PLAN - VIEW

(Show a minimum of three reference ties to durable physical objects, relevant monuments and physical conditions that will enable recovery of the corner.)



E 1/4 CORNER SECTION 7-T95N-R12W

I hereby certify that the survey work was completed and this certificate was prepared by me or under my direct personal supervision and that I am a duly registered land surveyor under the laws of the state of Iowa.

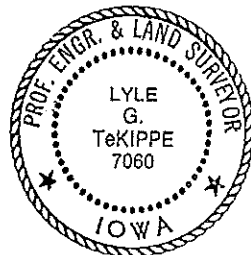
Signature: Lyle G. TeKippe  
Name typed or printed: Lyle G. TeKippe

Date: 10-15-91 Reg. No. 7060

Corners	List Corners to be Indexed Section	Twp	Range
E 1/4	7	T95N	R12W

*Placed in Twp Book 10/15/91*

SEAL



148-135

"County Engineer's Copy"