

# UNITED STATES PUBLIC LAND SURVEY CORNER CERTIFICATE

OF

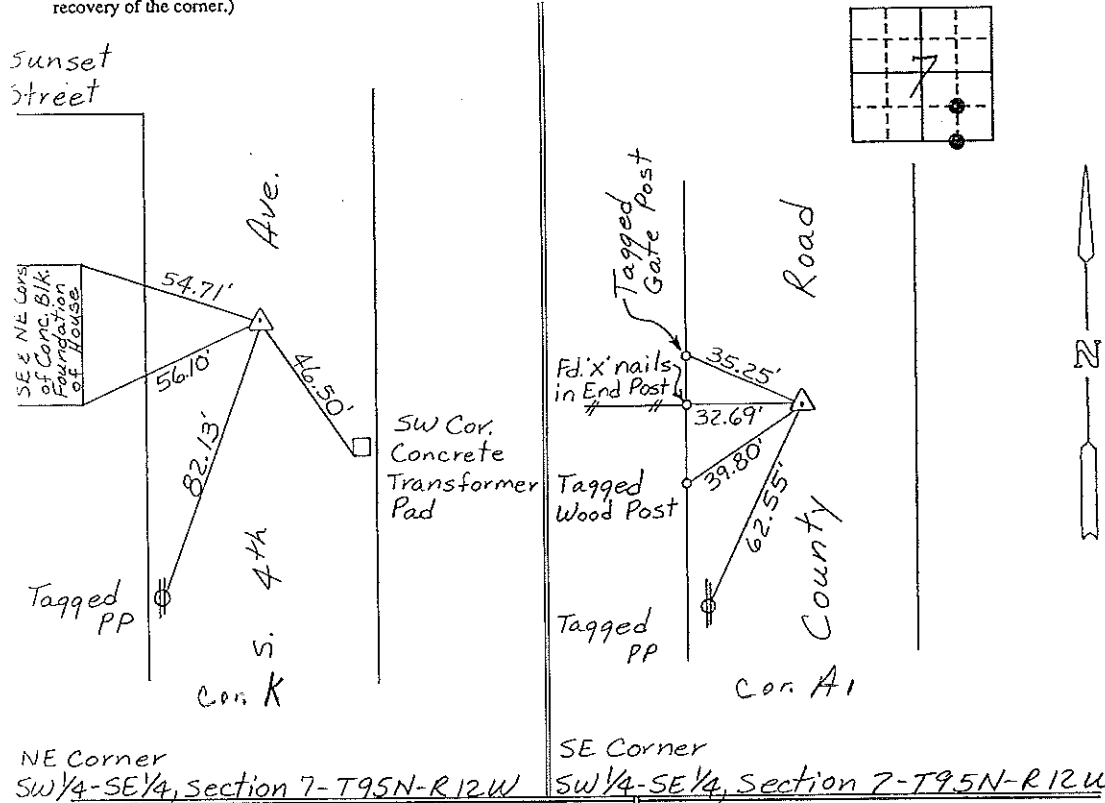
Land Survey Monuments situated in Section 7, Township 95 NORTH, Range 12 WEST, of the Fifth Principal Meridian, CHICKASAW County, Iowa.  
Previously recorded in NONE in County Recorder's Office.

(Show reason for preparing this certificate, the evidence and detailed procedures used in establishing the corner positions and monumentation found or placed.)

Monument Description and Remarks: NE CORNER, SW 1/4-SE 1/4, SECTION 7-T95N-R12W:  
Chiseled 'X' in Conc. Midway on Line between SE Cor., SW 1/4-SE 1/4 & NE Cor.  
NW 1/4-SE 1/4 - Also matching recorded survey dimensions.  
SE CORNER, SW 1/4-SE 1/4, SECTION 7-T95N-R12W: Found 5/8" Rebar.

### PLAN - VIEW

(Show a minimum of three reference ties to durable physical objects, relevant monuments and physical conditions that will enable recovery of the corner.)



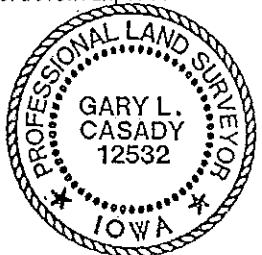
NE Corner  
SW 1/4-SE 1/4, Section 7-T95N-R12W

SE Corner  
SW 1/4-SE 1/4, Section 7-T95N-R12W

I hereby certify that the survey work was completed and this certificate was prepared by me or under my direct personal supervision and that I am a duly registered land surveyor under the laws of the state of Iowa.

Signature: Gary L. Casady  
Name typed or printed: Gary L. Casady  
Date: 11-12-93 Reg. No. 12532  
My Registration Expires December 31, 1994

Comers	Section	Twp	Range
NE Cor.			
SW 1/4-SE 1/4	7	95N	12W
SE Cor.			
SW 1/4-SE 1/4	7	95N	12W
Cor A <sub>1</sub>	7-95		



SEAL

Place in Book 11/29/93