

UNITED STATES PUBLIC LAND SURVEY CORNER CERTIFICATE

OF 1

Land Survey Monuments situated in Section 6, Township 95N, Range 11W, of the Fifth Principal Meridian, CHICKASAW County, Iowa. Previously recorded in (NONE) in County Recorder's Office.

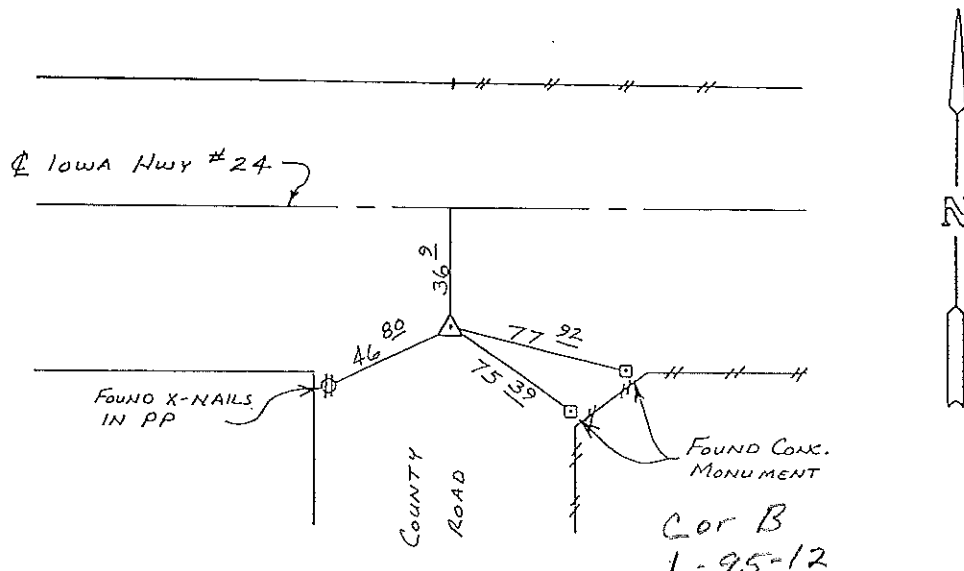
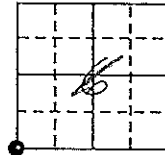
(book, page, document number, etc.)
(Show reason for preparing this certificate, the evidence and detailed procedures used in establishing the corner positions and monumentation found or placed.)

Monument Description and Remarks: FOUND 5/8" Ø REBAR

Section 1-95-12
As referred to in
Engr. Tie Book

PLAN - VIEW

(Show a minimum of three reference ties to durable physical objects, relevant monuments and physical conditions that will enable recovery of the corner.)



SW CORNER SECTION 6 - T95N - R11W

I hereby certify that the survey work was completed and this certificate was prepared by me or under my direct personal supervision and that I am a duly registered land surveyor under the laws of the state of Iowa.

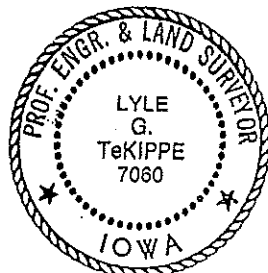
Signature: Lyle G. TeKippe
Name typed or printed: Lyle G. TeKippe

Date: 10-23-91 Reg. No. 7060

Corners	List Corners to be Indexed Section	Twp	Range
SW	6	95N	11W

Placed in
Tie Book
11/91

SEAL



148-171

"County Engineer's Copy"