

TeKIPPE ENGINEERING, P.C., 128 South Vine Street, West Union, Iowa 52175 Phone (319) 422-6131

UNITED STATES PUBLIC LAND SURVEY CORNER CERTIFICATE

OF

Land Survey Monuments situated in Section 6, Township 95 North, Range 12 West of the Fifth Principal Meridian, CHICKASAW County, Iowa.  
 Previously recorded in Book A, Page 156 in County Recorder's Office.  
*(book, page, document number, etc.)*

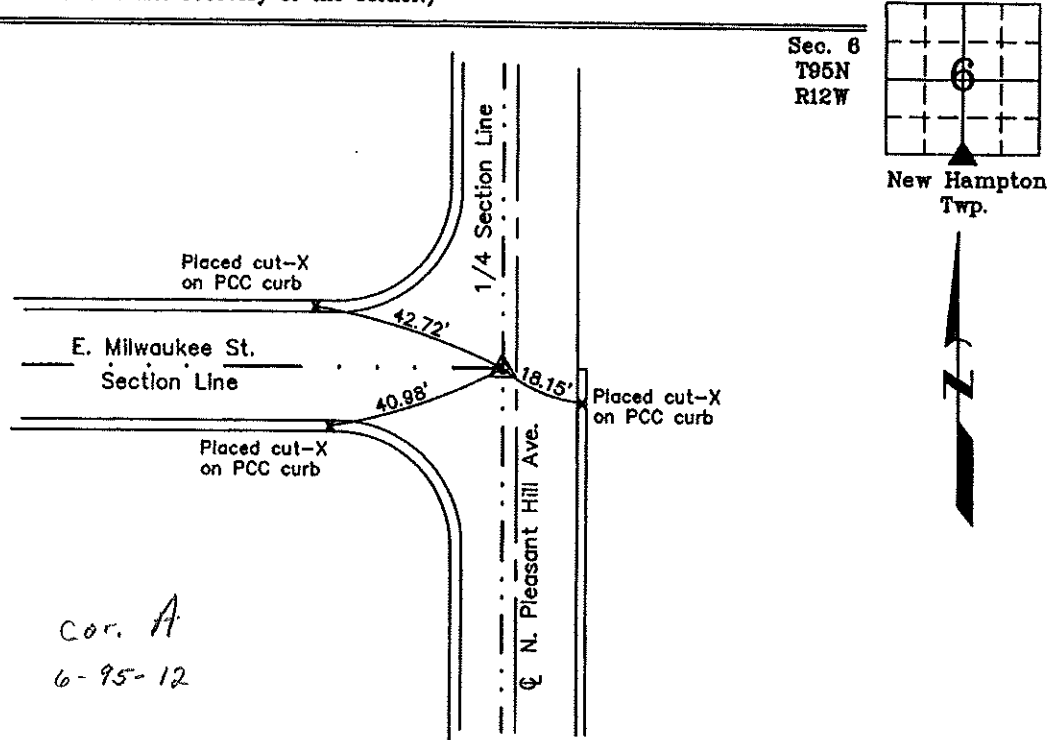
(Show reason for preparing this certificate, the evidence and detailed procedures used in establishing the corner positions and monumentation found or placed.)

Monument Description and Remarks: S 1/4 Corner Section 6 T95N R12W: Set MAG nail w/stainless steel washer LS 7060 as previous corner monument was covered with an ACC overlay. Coordinates from a previous survey that used the S 1/4 Corner was used to place the monument as all previous ties were missing.

PLAN - VIEW

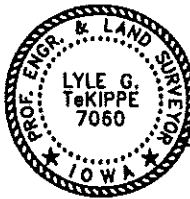
Project Number 00045.LS  
 FB. 48H PG. 1-3

(Show a minimum of three reference ties to durable physical objects, relevant monuments and physical conditions that will enable recovery of the corner.)



*Cor. A  
 6-95-12*

S 1/4 Corner Section 6 T95N R12W  
 Set MAG nail w/stainless steel washer LS 7060



I hereby certify that this land surveying document was prepared and the related survey work was performed by me or under my direct personal supervision and that I am a duly licensed Land Surveyor under the laws of the State of Iowa.

*Lyle G. TeKippe* 2-16-01  
 Lyle G. TeKippe Date  
 License number 7060  
 My license renewal date is December 31, 2000.  
 Sheets covered by this seal: Individual

Corners	List Corners to be Indexed		
	Section	Twp.	Range
S 1/4	6	95N	12W

Section 6-95-12  
As referred to in  
Engr. The Book

SLSI 9-90

UNITED STATES PUBLIC LAND SURVEY CORNER CERTIFICATE

OF

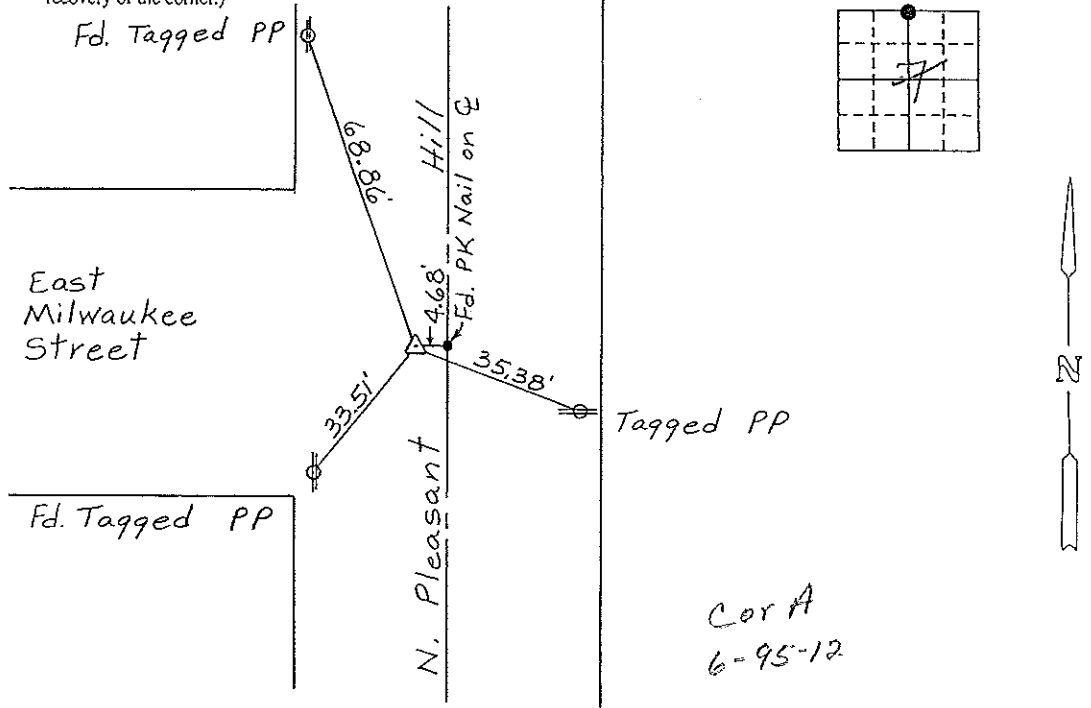
Land Survey Monuments situated in Section 76, Township 95 NORTH, Range 12 WEST, of the Fifth Principal Meridian, CHICKASAW County, Iowa. Previously recorded in Book 152, Page 289, Doc. # 00072 in County Recorder's Office.

(Show reason for preparing this certificate, the evidence and detailed procedures used in establishing the corner positions and monumentation found or placed.)

Monument Description and Remarks: N 1/4 CORNER, SECTION 7-T95N-R12W:  
Found PK Nail. Refiling because both Conc. Reference  
Mon. were gone.

PLAN - VIEW

(Show a minimum of three reference ties to durable physical objects, relevant monuments and physical conditions that will enable recovery of the corner.)



I hereby certify that the survey work was completed and this certificate was prepared by me or under my direct personal supervision and that I am a duly registered land surveyor under the laws of the state of Iowa.

Signature: Gary L. Casady  
Name typed or printed: Gary L. Casady

Date: 10-4-94 Reg. No. 12532

My Registration Renewal Date is December 31, 1994



SEAL

Corners	Section	Twp	Range
N 1/4	7	95N	12W

Comm A 6-95-12

Placed in the  
Book 10/94  
JFM

156-95

"County Engineer's Copy"

Section 6-95-12  
As referred to in  
Engr Tie Book

UNITED STATES PUBLIC LAND SURVEY CORNER CERTIFICATE

OF

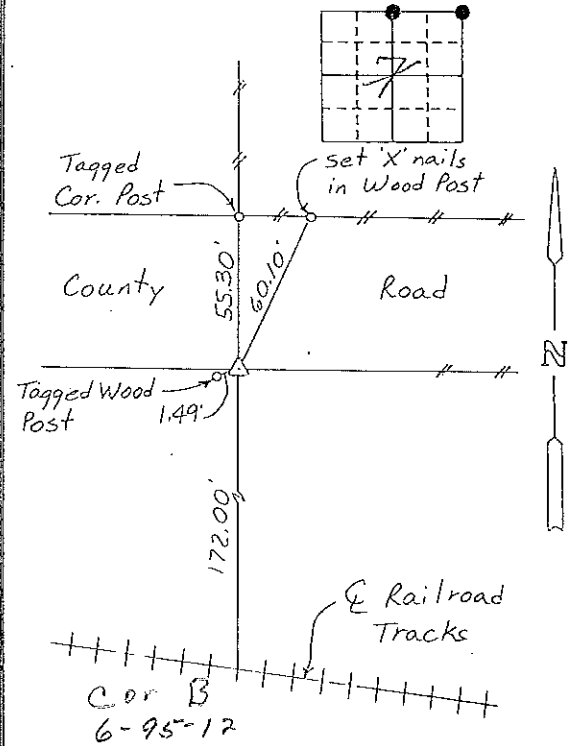
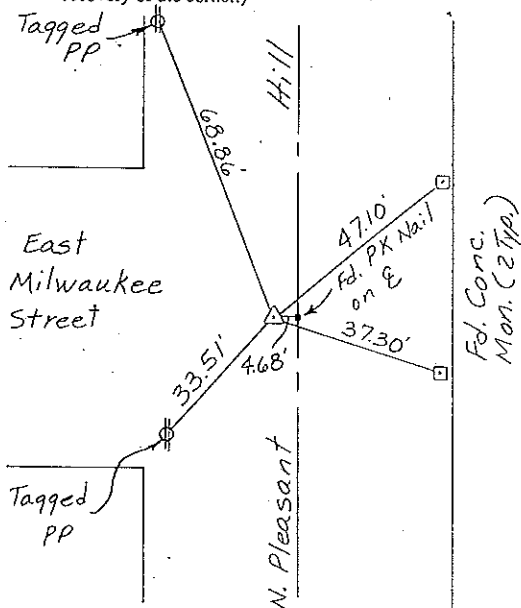
Land Survey Monuments situated in Section 76, Township 95 NORTH, Range 12 WEST, of the Fifth Principal Meridian, CHICKASAW County, Iowa. Previously recorded in NONE in County Recorder's Office.

(Show reason for preparing this certificate, the evidence and detailed procedures used in establishing the corner positions and monument found or placed.)

Monument Description and Remarks: N<sup>1</sup>/<sub>4</sub> CORNER, SECTION 7-T95N-R12W: Set PK Nail w/ Survey Cap from Ties matching doubled distance from NE Corner across NW Cor. of NE<sup>1</sup>/<sub>4</sub>-NE<sup>1</sup>/<sub>4</sub>. NE CORNER, SECTION 7-T95N-R12W: Set 1/2" Rebar w/cap on S. R.O.W. of County Road, Record distance from E of RR Tracks (per Co. Rd. & RR Records) & in line with N-S Fence.

PLAN - VIEW

(Show a minimum of three reference ties to durable physical objects, relevant monuments and physical conditions that will enable recovery of the corner.)



Cor A  
6-95-12

Cor B  
6-95-12

N<sup>1</sup>/<sub>4</sub> CORNER, SECTION 7-T95N-R12W

NE CORNER, SECTION 7-T95N-R12W

I hereby certify that the survey work was completed and this certificate was prepared by me or under my direct personal supervision and that I am a duly registered land surveyor under the laws of the state of Iowa.

Signature: Gary L. Casady  
Name typed or printed: Gary L. Casady

Date: 6-10-93 Reg. No. 12532  
My Registration Expires December 31, 1994

SEAL



Corners	Section	Twp	Range
N <sup>1</sup> / <sub>4</sub>	7	95N	12W
Cor A	6	95N	12W
NE	7	95N	12W
Cor B	6	95N	12W

Placed in  
tie book 7/9/93  
JFM