

Section 6-95-12  
 As referred to in  
 Engr. Tie Book

Chickasaw Co. Recorder  
 Cindy Messersmith  
**Fee Book 2007-1814**  
 09/11/2007 @0404PM  
 SCC SEC COR CERT  
 Book: Page: \$7.00 # Pages: 1  
 Total Fees:

*Herold - Recks Surveying, 25 1/2 East Main Street, Suite 204, New Hampton, IA 50658, Ph. 641-394-2725*

### UNITED STATES PUBLIC LAND SURVEY CORNER CERTIFICATE

Land Survey Monuments situated in:  
 Section 6-7, Township 95 North, Range 12 West of the Fifth Principal Meridian,  
Chickasaw County, Iowa. Previously recorded in Book 152, Page 289  
 in County Recorder's Office. (book, page, document number, etc.)

(Show reason for preparing this certificate, the evidence and detailed procedures used in establishing the corner positions and monumentation found or placed.)  
**Monument Description and Remarks:**  
 NE Corner of Section 7, T-95-N, R-12-W, found a 1/2"Ø Rebar w/ Orange Plastic Cap LS 12532, from information on the previous section corner certificate, 2 of the ties were missing, added 2 new ties and updated the distance on the remaining tie (post leaning).

#### PLAN - VIEW

(Show a minimum of three reference ties to durable physical objects, relevant monuments and physical conditions that will enable recovery of the corner.)

Sec. 7  
T95N  
R12W

New Hampton Twp.

NE Corner of Section 7, T-95-N, R-12-W,  
 Found a 1/2"Ø Rebar w/ Orange Plastic Cap LS 12532

Corners	List Corners to be Indexed		
	Section	Twp.	Range
NE	7	95	12

**PAUL R. HEROLD**  
15525

I hereby certify that this land surveying document was prepared and the related survey work was performed by me or under my direct personal supervision and that I am a duly licensed Land Surveyor under the laws of the State of Iowa.

*Paul R. Herold* 9-11-07  
 Paul R. Herold Date:

License number 15525  
 My license renewal date is December 31, 2008.  
 Sheets covered by this seal: Individual sheet only

Project Number: 2007-094  
 FB: New Hampton 1, Pgs. 13-14

File: S:\Projects\2007\2007-094.dwg, 9/11/2007 8:14:41 AM

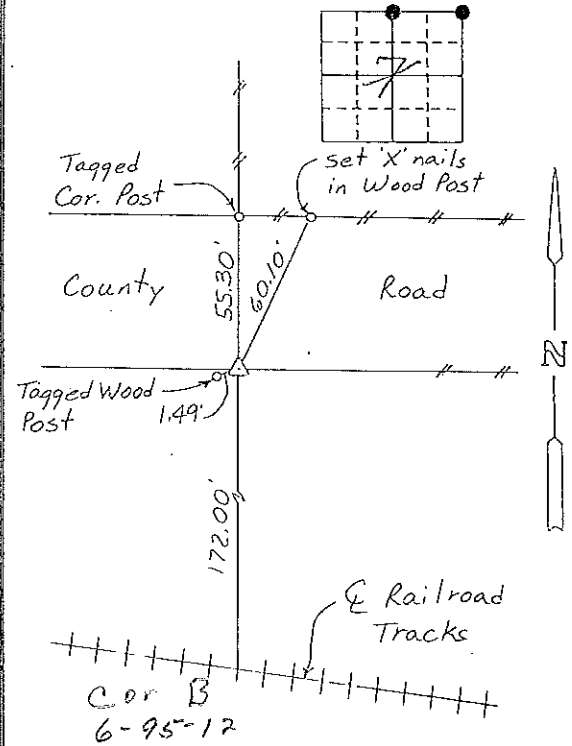
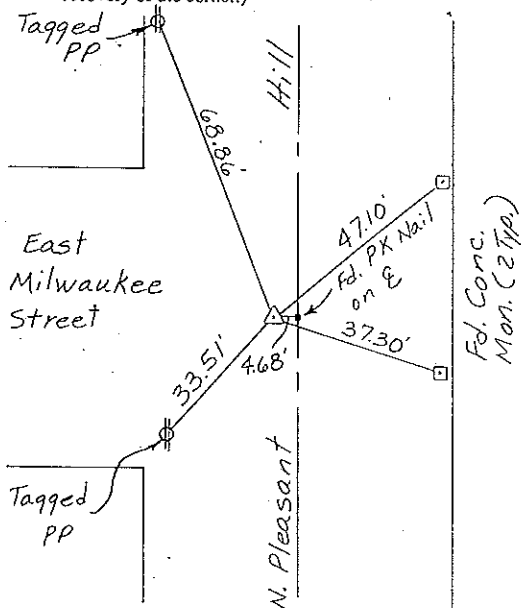
Section 6-95-12  
As referred to in  
Engr Tie Book

UNITED STATES PUBLIC LAND SURVEY CORNER CERTIFICATE  
OF  
Land Survey Monuments situated in Section 76, Township 95 NORTH, Range 12 WEST, of the Fifth Principal Meridian, CHICKASAW County, Iowa.  
Previously recorded in NONE in County Recorder's Office.  
(Book, page, document number, etc.)

(Show reason for preparing this certificate, the evidence and detailed procedures used in establishing the corner positions and monumentation found or placed.)  
Monument Description and Remarks: N<sup>1</sup>/<sub>4</sub> CORNER, SECTION 7-T95N-R12W: Set PK Nail w/ Survey Cap from Ties matching doubled distance from NE Corner across NW Cor. of NE<sup>1</sup>/<sub>4</sub>-NE<sup>1</sup>/<sub>4</sub>. NE CORNER, SECTION 7-T95N-R12W: Set 1/2" Rebar w/cap on S. R.O.W. of County Road, Record distance from E of RR Tracks (per Co. Rd. & RR Records) & in line with N-S Fence.

PLAN - VIEW

(Show a minimum of three reference ties to durable physical objects, relevant monuments and physical conditions that will enable recovery of the corner.)



N<sup>1</sup>/<sub>4</sub> CORNER, SECTION 7-T95N-R12W

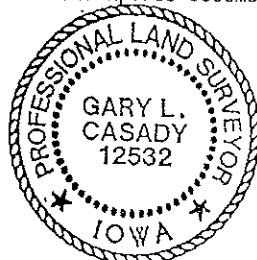
NE CORNER, SECTION 7-T95N-R12W

I hereby certify that the survey work was completed and this certificate was prepared by me or under my direct personal supervision and that I am a duly registered land surveyor under the laws of the state of Iowa.

Signature: Gary L. Casady  
Name typed or printed: Gary L. Casady  
Date: 6-10-93 Reg. No. 12532  
My Registration Expires December 31, 1994

Corners	Section	Twp	Range
N <sup>1</sup> / <sub>4</sub>	7	95N	12W
Cor A	6	95N	12W
NE	7	95N	12W
Cor B	6	95N	12W

SEAL



Placed in  
tie book 7/9/93  
JFM