

Prepared by & Return to Herold - Recks Surveying, 10 East Main Street, New Hampton, IA 50658, Ph. 641-394-2725

UNITED STATES PUBLIC LAND SURVEY CORNER CERTIFICATE

Land Survey Monuments situated in Section 7, Township 95 North, Range 12 West of the Fifth Principal Meridian, Chickasaw County, Iowa. Previously recorded in Bk. 148, Pg. 133 in the County Recorder's office.

This certificate is being prepared in compliance with Iowa Code Chapter 355.11 because:

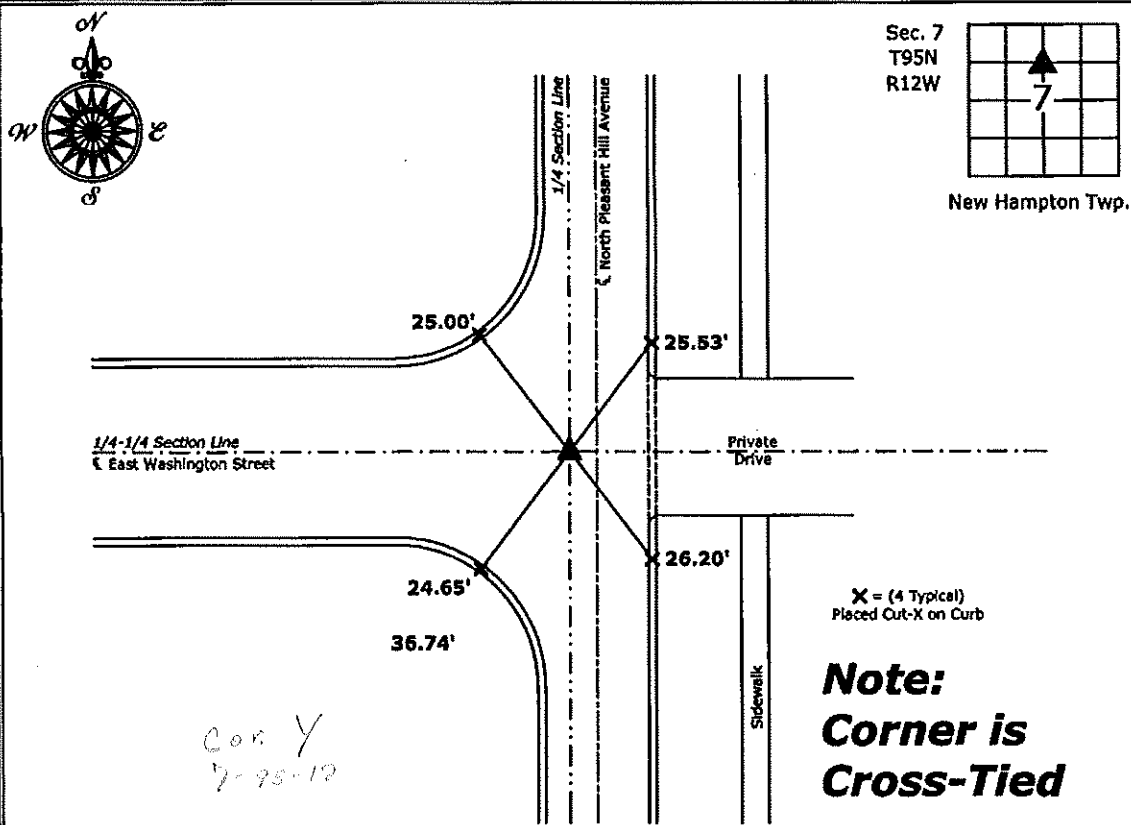
- There is no certificate on file for this corner.
- There are no longer three valid ties of record.
- There are changes to reference ties of record.
- There is change of monumentation of record.
- To clarify description of record monument (ties).

Monument Description and Remarks:

Southwest Corner NW 1/4-NE 1/4: Set Survey Mark Nail w/Stainless Steel Washer PLS 15525 at the intersection of the 1/4 Section Line and the extension of the monumented South Line of the Northwest Quarter of the Northeast Quarter of said Section 7.

PLAN - VIEW

(Show a minimum of three reference ties to durable physical objects, relevant monuments and physical conditions that will enable recovery of the corner.)



Cor. Y
7-95-12

Southwest Corner NW 1/4-NE 1/4 Section 7-95-12
 Set 5/8"Ø rebar w/2"Ø aluminum cap PLS 15525



I hereby certify that this land surveying document was prepared and the related survey work was performed by me or under my direct personal supervision and that I am a duly licensed Land Surveyor under the laws of the State of Iowa.

Paul R. Herold 7-2-13
 Paul R. Herold Date:
 License number 15525
 My license renewal date is December 31, 2014.
 Sheets covered by this seal: Individual sheet only

List Corners to be Indexed			
Corners	Section	Twp.	Range
SW-NW-NE	7	95	12

Project Number: 2013-101
 FB: New Hampton 2, Pgs. 1-2

UNITED STATES PUBLIC LAND SURVEY CORNER CERTIFICATE

OF

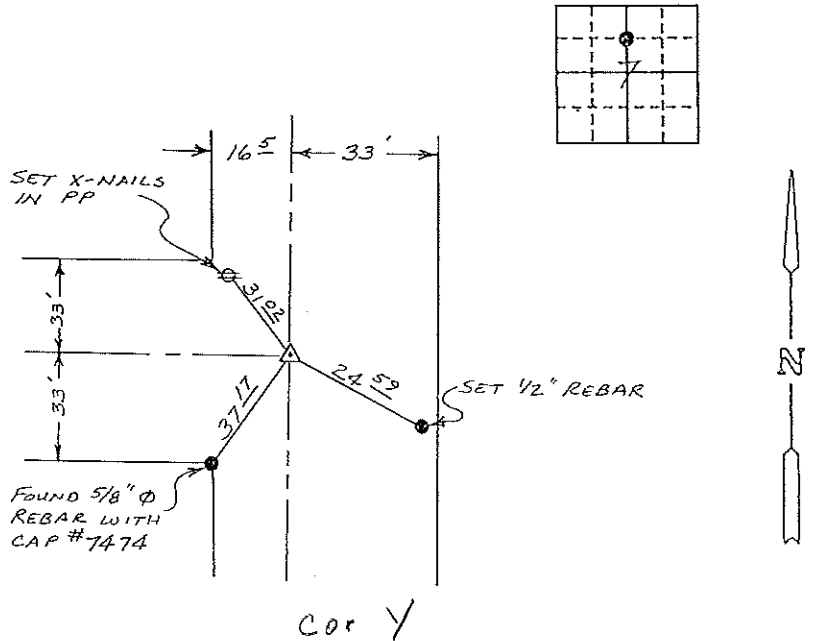
Land Survey Monuments situated in Section 7, Township 95N, Range 12W, of the Fifth Principal Meridian, CHICKASAW County, Iowa. Previously recorded in (NONE) in County Recorder's Office.

(book, page, document number, etc.)
 (Show reason for preparing this certificate, the evidence and detailed procedures used in establishing the corner positions and monumentation found or placed.)

Monument Description and Remarks: SET PK NAIL IN ASPHALT BASED ON RECORD DIMENSIONS FROM FOUND MONUMENTATION.
(33.0' NORTH & 16.5' EAST OF FOUND BLOCK CORNER)

PLAN - VIEW

(Show a minimum of three reference ties to durable physical objects, relevant monuments and physical conditions that will enable recovery of the corner.)

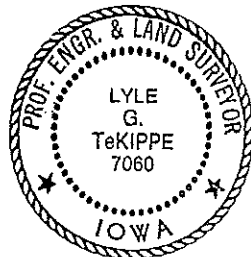


NW CORNER SW 1/4 - NE 1/4
 SECTION 7 - T95N - R12W

I hereby certify that the survey work was completed and this certificate was prepared by me or under my direct personal supervision and that I am a duly registered land surveyor under the laws of the state of Iowa.

Signature: Lyle G. TeKippe
 Name typed or printed: Lyle G. TeKippe
 Date: 10-15-91 Reg. No. 7060

SEAL



Corners	List Corners to be Indexed Section	Twp	Range
NW CORNER SW 1/4 - NE 1/4	7	95N	12W

*Placed in Tei Book
 10/16/91*