

Chickasaw Co. Recorder
 Cindy Messersmith
Fee Book 2008-1672
 08/29/2008 @0110PM
 SCC SEC COR CERT
 Book: Page: # Pages: 1
 Total Fees: \$7.00

Herold - Reicks Surveying, 25 1/2 East Main Street, Suite 204, New Hampton, IA 50659, Ph. 515-384-2725

UNITED STATES PUBLIC LAND SURVEY CORNER CERTIFICATE

Land Survey Monuments situated in Section 7, Township 95 North, Range 12 West of the Fifth Principal Meridian, Chickasaw County, Iowa. Previously recorded in Bk. 148, Pg. 138 in the Chickasaw County Recorder's office.

This certificate is being prepared in compliance with Iowa Code Chapter 355.11 because:

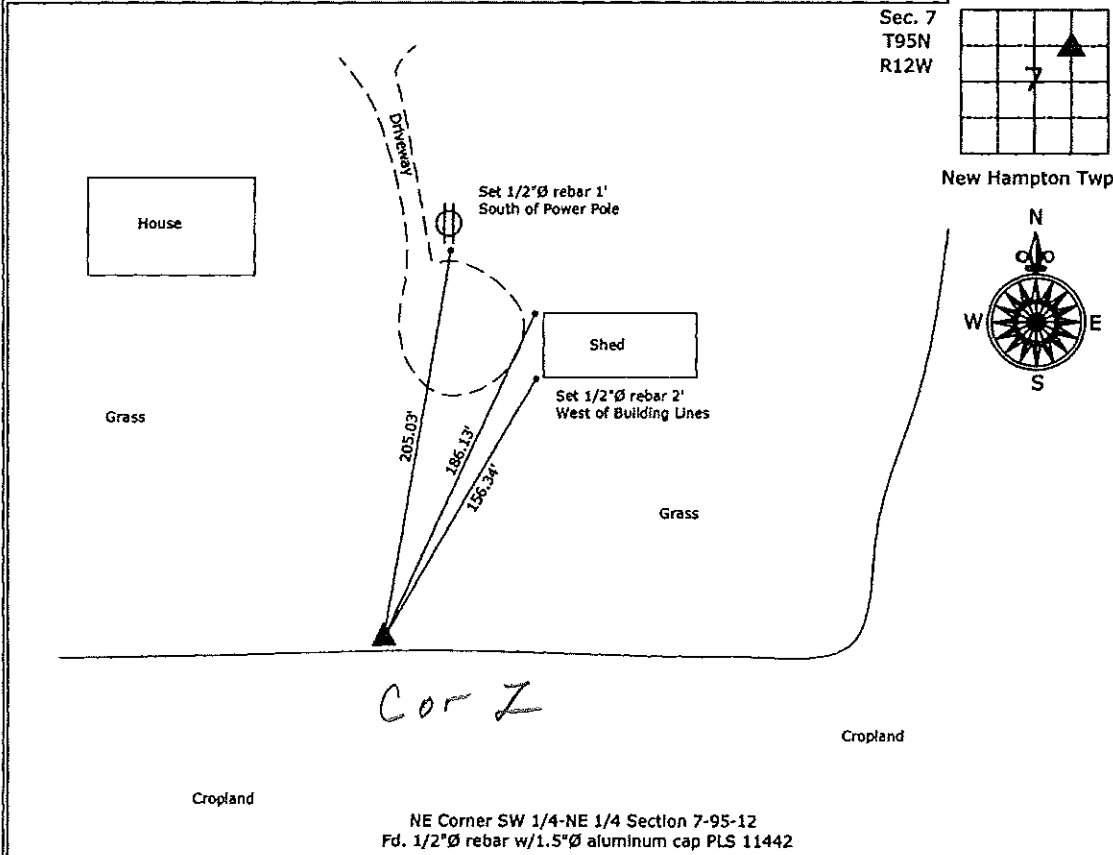
- There is no certificate on file for this corner.
- There are no longer three valid ties of record.
- There are changes to reference ties of record.
- There is change of monumentation of record.
- To clarify description of record monument (ties).

Monument Description and Remarks:

NE Corner SW 1/4-NE 1/4; Previous section corner certificate indicates 1/2"Ø rebar w/orange plastic cap 7060. Located position from surveys of record and found 1/2"Ø rebar w/1.5"Ø aluminum cap PLS 11442. Monument meets position tolerance. All previous ties are missing. Set three new ties.

PLAN - VIEW

(Show a minimum of three reference ties to durable physical objects, relevant monuments and physical conditions that will enable recovery of the corner.)



Cor Z

NE Corner SW 1/4-NE 1/4 Section 7-95-12
 Fd. 1/2"Ø rebar w/1.5"Ø aluminum cap PLS 11442



I hereby certify that this land surveying document was prepared and the related survey work was performed by me or under my direct personal supervision and that I am a duly licensed Land Surveyor under the laws of the State of Iowa.

Paul R. Herold 8-29-08
 Paul R. Herold Date:
 License number 15525
 My license renewal date is December 31, 2008.
 Sheets covered by this seal: Individual sheet only

List Corners to be Indexed			
Corners	Section	Twp.	Range
NE-SW-NE	7	95	12

Project Number: 2008-086
 FB: Chickasaw County 1, Pg. 28

File: S:\Projects\2008\2008-086.dwg, 8/27/2008 11:05:17 AM

UNITED STATES PUBLIC LAND SURVEY CORNER CERTIFICATE

OF

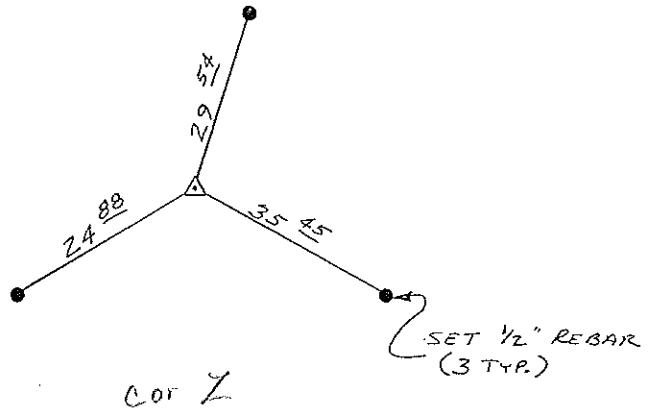
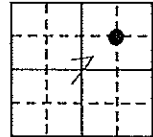
Land Survey Monuments situated in Section 7, Township 95 N, Range 12 W, of the Fifth Principal Meridian, CHICKASAW County, Iowa. Previously recorded in (NONE) in County Recorder's Office.

(book, page, document number, etc.)
(Show reason for preparing this certificate, the evidence and detailed procedures used in establishing the corner positions and monumentation found or placed.)

Monument Description and Remarks: SET 1/2" Ø REBAR WITH CAP @ RECORD DISTANCE FROM FOUND LOT CORNER, 504.5' EAST OF THE SE CORNER OF LOT 20 OF THE IRREGULAR SURVEY OF THE NW 1/4 - NE 1/4 SECTION 7.

PLAN - VIEW

(Show a minimum of three reference ties to durable physical objects, relevant monuments and physical conditions that will enable recovery of the corner.)



NE CORNER SW 1/4 - NE 1/4
SECTION 7 - T95N - R7W

I hereby certify that the survey work was completed and this certificate was prepared by me or under my direct personal supervision and that I am a duly registered land surveyor under the laws of the state of Iowa.

Signature: Lyle G. TeKippe
Name typed or printed: Lyle G. TeKippe

Date: 10-15-91 Reg. No. 7060

Comers	Section	Twp	Range
NE CORNER SW 1/4 - NE 1/4	7	95N	12W

Placed in the Book 10/16/91

SEAL

