

Herold - Reicks Surveying, 10 East Main Street, New Hampton, IA 50659, Ph. 641-394-2725, Fax. 641-394-2710

UNITED STATES PUBLIC LAND SURVEY CORNER CERTIFICATE

Land Survey Monuments situated in Section 8, Township 95 North, Range 12 West of the Fifth Principal Meridian, Chickasaw County, Iowa. Previously recorded in Doc. #2001-1718 in the Chickasaw County Recorder's office.

This certificate is being prepared in compliance with Iowa Code Chapter 355.11 because:

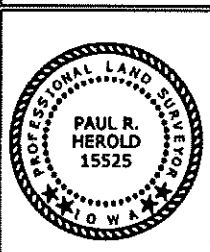
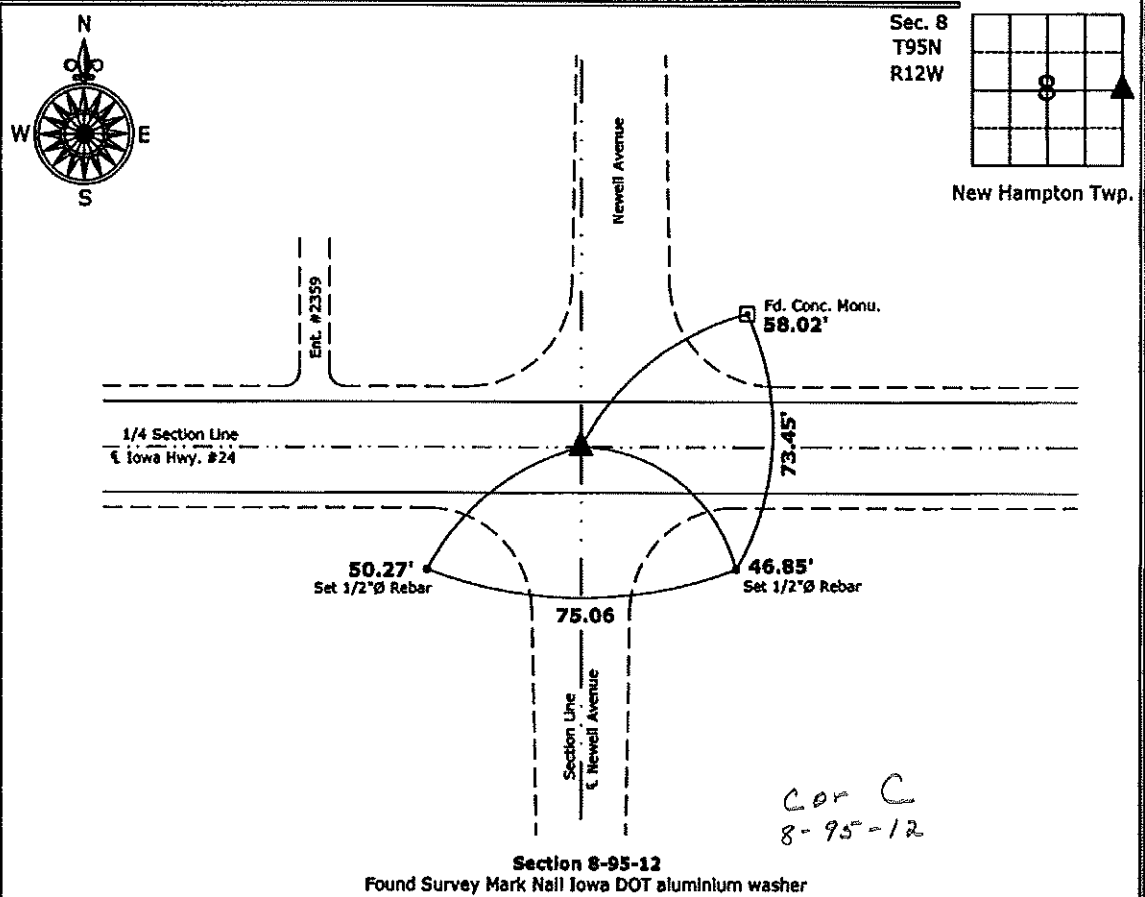
- There is no certificate on file for this corner.
- There are no longer three valid ties of record.
- There are changes to reference ties of record.
- There is change of monumentation of record.
- To clarify description of record monument (ties).

Monument Description and Remarks:

East 1/4 Corner: Iowa DOT replaced monument after H.M.A. overlay. Found Survey Mark Nail with aluminum Iowa DOT washer (previously Iowa DOT aluminium monument) with information obtained from the Iowa DOT and previous Section Corner Certificate.

PLAN - VIEW

(Show a minimum of three reference ties to durable physical objects, relevant monuments and physical conditions that will enable recovery of the corner.)



I hereby certify that this land surveying document was prepared and the related survey work was performed by me or under my direct personal supervision and that I am a duly licensed Land Surveyor under the laws of the State of Iowa.

Paul R. Herold 11-9-10
 Paul R. Herold Date:
 License number 15525
 My license renewal date is December 31, 2010.
 Sheets covered by this seal: Individual sheet only

List Corners to be Indexed			
Corners	Section	Twp.	Range
E 1/4	8	95	12
Project Number: 2010-144			
FB: Chickasaw County 3, Pg. 57			

FILED 2001-1718
 RECORDER'S OFFICE
 CHICKASAW COUNTY, IOWA

2001 AUG 14 AM 9:54

CINDY MESSERSMITH
 COUNTY RECORDER

TeKIPPE ENGINEERING, P.C., 128 South Vine Street, West Union, Iowa 52175 Phone (563) 422-6131

UNITED STATES PUBLIC LAND SURVEY CORNER CERTIFICATE

OF

Land Survey Monuments situated in Section 8, Township 95 North, Range 12 West of the Fifth Principal Meridian, CHICKASAW County, Iowa.

Previously recorded in none in County Recorder's Office.
 (book, page, document number, etc.)

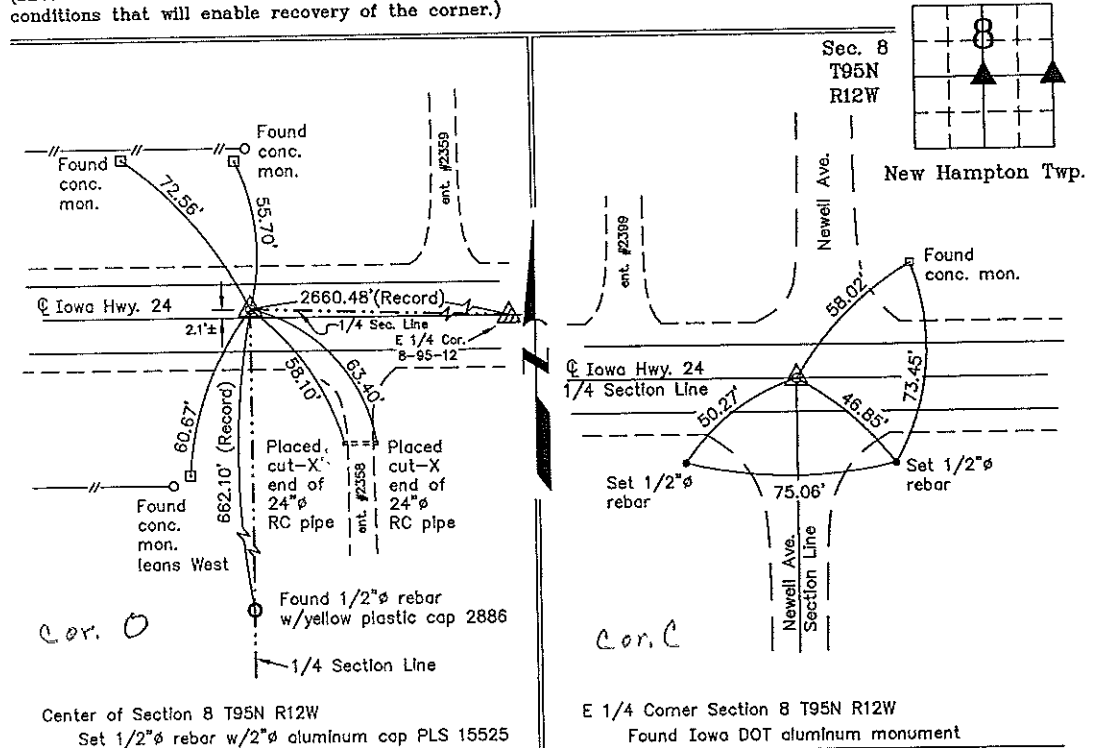
(Show reason for preparing this certificate, the evidence and detailed procedures used in establishing the corner positions and monumentation found or placed.)

Monument Description and Remarks: Center of Section 8 T95N R12W: Set 1/2"Ø rebar w/2"Ø aluminum cap PLS 15525 at a distance-distance intersection in a 4"Ø hole in the ACC mat using the record distances noted in a Survey and Plat made by L.P. Erdman, recorded in the Chickasaw County Recorder's Office on October 7, 1991 in Book 148, Page 96. E 1/4 Corner Section 8 T95N R12W: Found Iowa DOT aluminum monument with information obtained from a Survey and Plat made L.P. Erdman, recorded in the Chickasaw County Recorder's Office on October 7, 1991 in Book 148, Page 96.

PLAN - VIEW

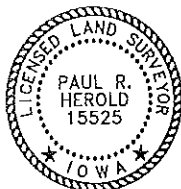
Project Number 0114.LS
 FB New Hampton 1 PG. 16-21

(Show a minimum of three reference ties to durable physical objects, relevant monuments and physical conditions that will enable recovery of the corner.)



Center of Section 8 T95N R12W
 Set 1/2"Ø rebar w/2"Ø aluminum cap PLS 15525

E 1/4 Corner Section 8 T95N R12W
 Found Iowa DOT aluminum monument



I hereby certify that this land surveying document was prepared and the related survey work was performed by me or under my direct personal supervision and that I am a duly licensed Land Surveyor under the laws of the State of Iowa.

Paul R. Herold 8-13-01
 Paul R. Herold Date
 License number 15525
 My license renewal date is December 31, 2002.
 Sheets covered by this seal: Individual

List Corners to be Indexed			
Corners	Section	Twp.	Range
Center	8	95N	12W
E 1/4	8	95N	12W

File 10-10

County Engineer's Copy