

Prepared by & Return to Harold - Reicks Surveying, 10 East Main Street, New Hampton, IA 50658, Ph. 641-354-2725

### UNITED STATES PUBLIC LAND SURVEY CORNER CERTIFICATE

Land Survey Monuments situated in Section 8, Township 95 North, Range 14 West of the Fifth Principal Meridian, Chickasaw County, Iowa. Corner was not previously recorded in the County Recorder's office.

This certificate is being prepared in compliance with Iowa Code Chapter 355.11 because:

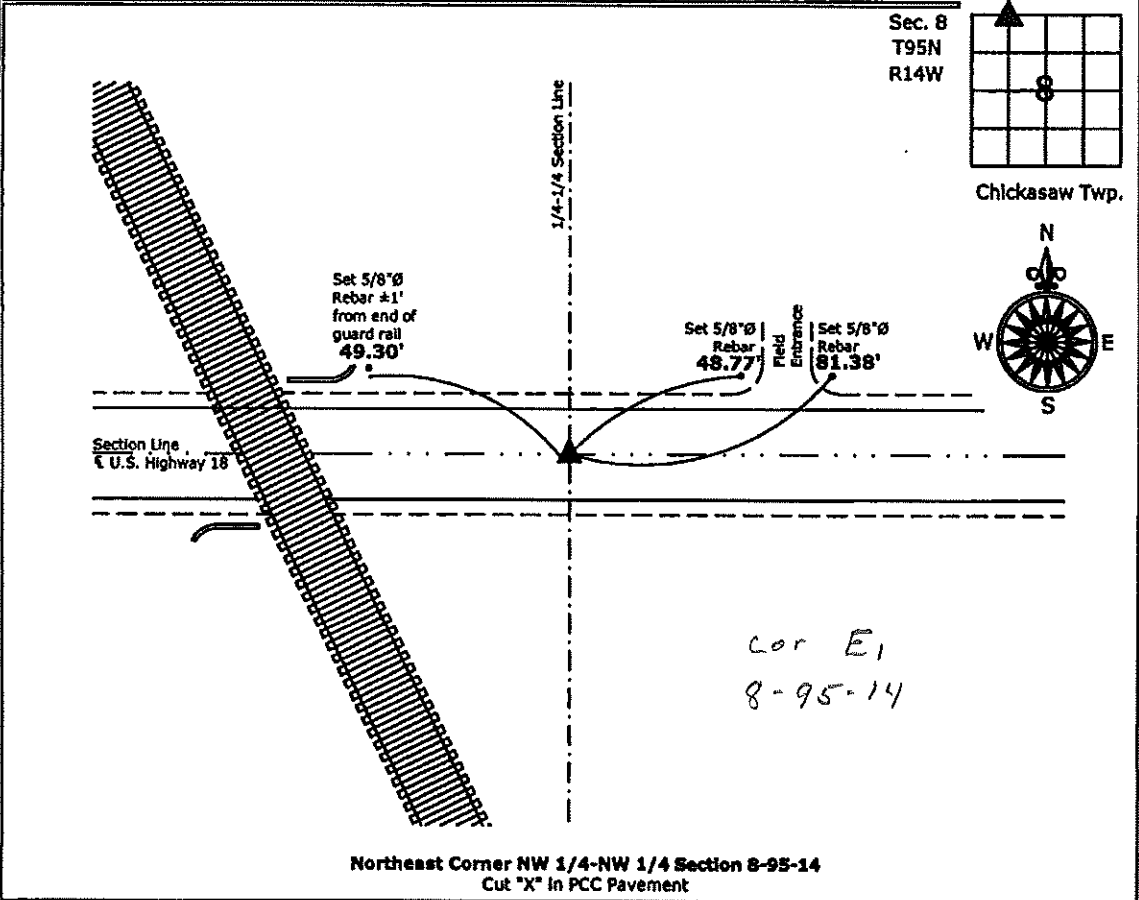
- There is no certificate on file for this corner.
- There are no longer three valid ties of record.
- There are changes to reference ties of record.
- There is change of monumentation of record.
- To clarify description of record monument (ties).

Monument Description and Remarks:

**Northeast Corner - NW 1/4 - NW 1/4:** Cut "X" in PCC Pavement equidistant and online between the North 1/4 and Northwest Corners of Section 8.

#### PLAN - VIEW

(Show a minimum of three reference ties to durable physical objects, relevant monuments and physical conditions that will enable recovery of the corner.)



Northeast Corner NW 1/4-NW 1/4 Section 8-95-14  
 Cut "X" in PCC Pavement



I hereby certify that this land surveying document was prepared and the related survey work was performed by me or under my direct personal supervision and that I am a duly licensed Land Surveyor under the laws of the State of Iowa.

*Kirk D. Reicks* 1-12-12  
 Kirk D. Reicks Date:

License number 19211  
 My license renewal date is December 31, 2012.  
 Sheets covered by this seal: Individual sheet only

List Corners to be Indexed			
Corners	Section	Twp.	Range
NE-NW-NW	8	95	14

Project Number: 2011-129  
 FB: Chickasaw County 3, Pgs. 74-75

DOCUMENT No. 02061 FILED FOR RECORD THE 6th DAY OF MAY 1996 AT 11:27 O'CLOCK A.M. BOOK 160 DEED 443 STATE OF IOWA, CHICKASAW COUNTY.  
 RECORDING FEE \$ 6.00 By: Leitha N. Ross Recorder  
 LEITHA N. ROSS  
 TRANSFER FEE \$ 0.00 Deputy

Prepared by: Erdman Engineering P.C. 708 Commerce Drive, P.O. Box 246, Decorah Iowa, 52101  
 Phone (319)382-4194, Fax (319)382-3623

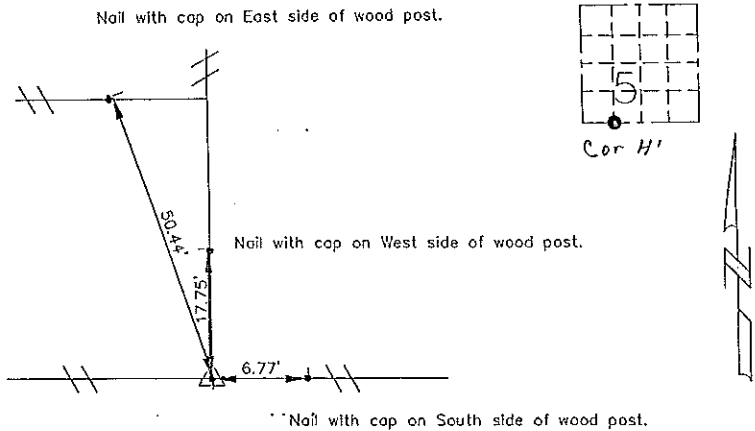
### United States Public Land Survey Corner Certificate of

Land Survey Monuments situated in Section 5 Township 95 Range 12 of the Fifth Principle Meridian,  
Chickasaw County, Iowa. Previously recorded in does not apply in County Recorders Office.

(Show reason for preparing this certificate, the evidence and detailed procedures used in establishing the corner positions and monumentation found or placed.)

Monument Description and Remarks: This certificate is prepared in accordance with Section 355.11 of the 1995 Code of Iowa. No previous certificate has been filed for this corner location. We set a 1/2" bar with cap RLS #11442 at the existing fence corner as the SSW 1/8 corner of Sec. 5-95-12. Property line fences from this corner run North, East and West. A distance from the SW Corner to the SSW 1/8 Corner of 20.34 chains was found in the County Engineer's tie records and we checked this distance with a distance between the SW corner and fence found at the SSW 1/8 Corner.

Plan-View  
 (Show a minimum of three reference ties to durable physical objects, relevant monuments and physical conditions that will enable recovery of the corner.)



Cor H1

SSW 1/8 Corner Set 1/2" bar with cap RLS #11442.



I hereby certify that the survey work was completed and this certificate was prepared by me or under by direct supervision and that I am a duly registered land surveyor under the laws of the State of Iowa.

Signature: Lindsay Erdman  
 Lindsay Erdman, P.E. and L.S.

Date: 4/27/96 Reg. No. 11442

My license will be renewed January 1, 1997

Corners	Section	Twp.	Range
SSW 1/8	5	95	12

BOOK 160 PAGE 443