

Chickasaw Co. Recorder
 Cindy Messersmith
Fee Book 2008-0086
 01/11/2008 @0414PM
 SCC SEC COR CERT
 Book: Page: # Pages: 1
 Total Fees: \$7.00

Section 5-95-12
 As referred to in
 Engr. Tie Book

Herold - Reicks Surveying, 25 1/2 East Main Street, Suite 204, New Hampton, IA 50659, Ph. 641-394-2725

UNITED STATES PUBLIC LAND SURVEY CORNER CERTIFICATE

Land Survey Monuments situated in:
 Section 5 8, Township 95 North, Range 12 West of the Fifth Principal Meridian,
Chickasaw County, Iowa. Previously recorded in none
 (book, page, document number, etc.)
 in County Recorder's Office.

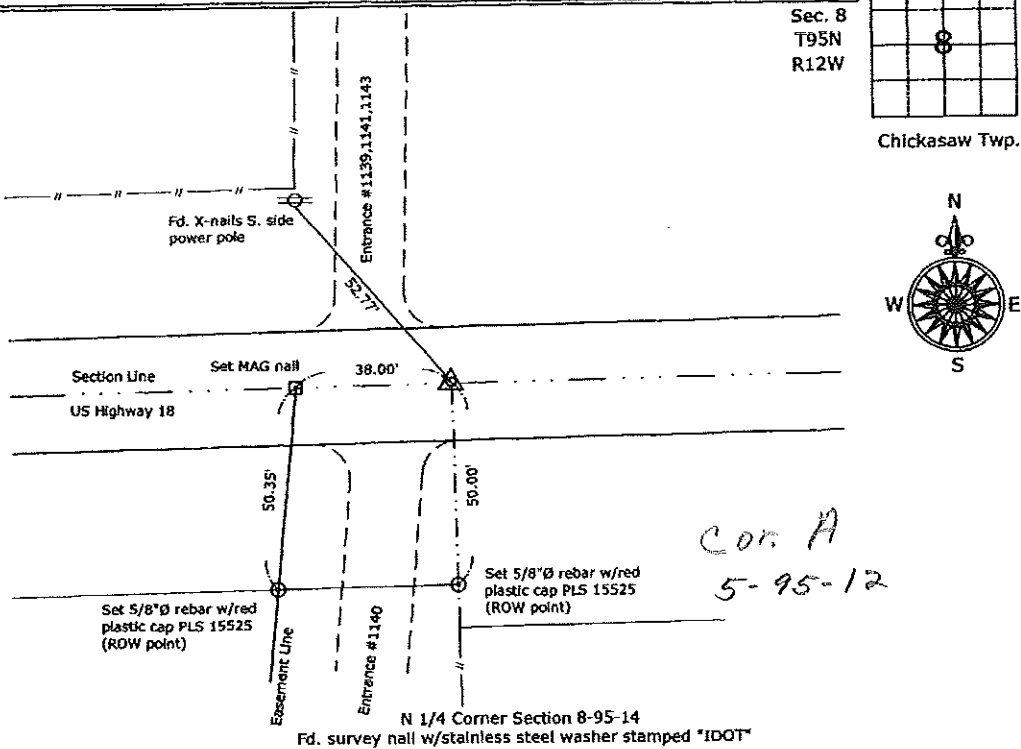
(Show reason for preparing this certificate, the evidence and detailed procedures used in establishing the corner positions and monumentation found or placed.)

Monument Description and Remarks:

N 1/4 Corner Section 8-95-14: Fd. survey nail w/stainless steel washer stamped "IDOT".

PLAN - VIEW

(Show a minimum of three reference ties to durable physical objects, relevant monuments and physical conditions that will enable recovery of the corner.)



I hereby certify that this land surveying document was prepared and the related survey work was performed by me or under my direct personal supervision and that I am a duly licensed Land Surveyor under the laws of the State of Iowa.

Paul R. Herold 1-11-08
 Paul R. Herold Date:
 License number 15525
 My license renewal date is December 31, 2008.
 Sheets covered by this seal: Individual sheet only

Corners	List Corners to be Indexed		
	Section	Twp.	Range
N 1/4	8	95	12

Project Number: 2007-123
 FB: Chickasaw County 1, Pgs. 51-52

File: S:\Projects\2007-123\dwg\2007-123.dwg, 1/10/2008 11:12:56 AM

DOCUMENT No. 02368 FILED FOR RECORD THE 12th DAY OF JUNE, 1996 AT 8:53 O'CLOCK A.M. BOOK 161 DEEDS PAGE 130

RECORDING FEE \$ 6.00 STATE OF IOWA, CHICKASAW COUNTY. Leitha N. Ross Recorder
 LEITHA N. ROSS
 TRANSFER FEE \$ By Deputy

Prepared by: Erdman Engineering P.C. 708 Commerce Drive, P.O. Box 246, Decorah Iowa, 52101
 Phone (319)382-4194, Fax (319)382-3623

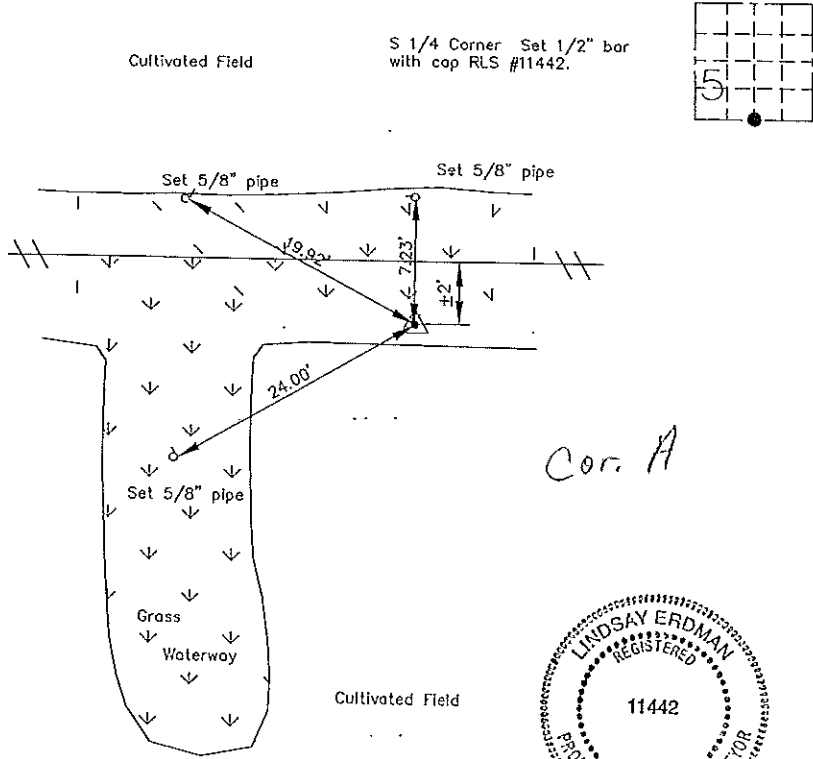
United States Public Land Survey Corner Certificate of

Land Survey Monuments situated in Section 5 Township 95 Range 12 of the Fifth Principle Meridian, Chickasaw County, Iowa. Previously recorded in does not apply In County Recorders Office.

(Show reason for preparing this certificate, the evidence and detailed procedures used in establishing the corner positions and monumentation found or placed.)

Monument Description and Remarks: This certificate is prepared in accordance with Section 355.11 of the 1995 Code of Iowa. No previous certificate has been filed for this corner location. We set a 1/2" bar with cap RLS #11442 on line from the SE corner through the SSE 1/8 at the same distance from the SSE 1/8 to the S 1/4 (1352.16') as compared to the distance between the SE and the SSE 1/8 corner (1352.16'). We did not find the stone referenced in the County Engineer's Tie Records and no record or evidence of ties taken to the stone were found.

Plan-View
 (Show a minimum of three reference ties to durable physical objects, relevant monuments and physical conditions that will enable recovery of the corner.)



I hereby certify that the survey work was completed and this certificate was prepared by me or under by direct supervision and that I am a duly registered land surveyor under the laws of the State of Iowa.

Signature Lindsay Erdman
 Lindsay Erdman, P.C. and L.S.
 Date: 4/27/96 Reg. No. 11442
 My license will be renewed January 1, 1997

List Corners to be Indexed			
Corners	Section	Twp.	Range
S 1/4	5	95	12