

XY DOCUMENT No. 02062 FILED FOR RECORD THE 6th DAY OF MAY, 1996 AT 11:27 O'CLOCK A.M. BOOK 160 DEED PAGE 444
 RECORDING FEE \$ 6.00 By LEITHA M. ROSS Deputy
 TRANSFER FEE \$ ---

Prepared by: Erdman Engineering P.C. 708 Commerce Drive, P.O. Box 246, Decorah Iowa, 52101
 Phone (319)382-4194, Fax (319)382-3623

United States Public Land Survey Corner Certificate of

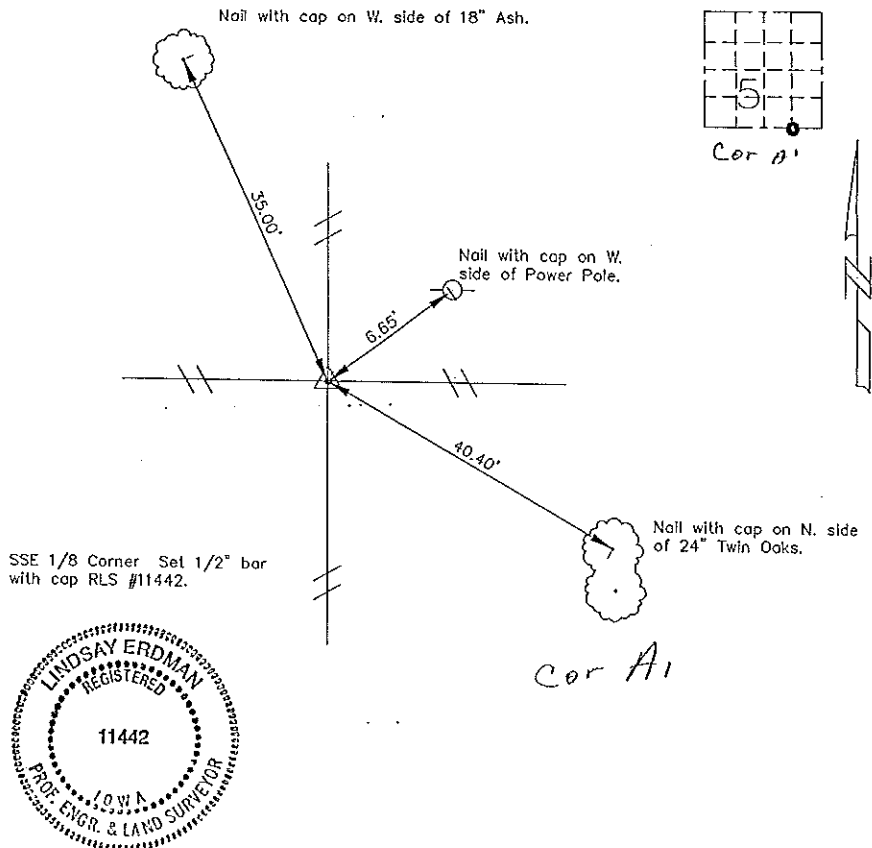
Land Survey Monuments situated in Section 5 Township 95 Range 12 of the Fifth Principle Meridian,
Chickasaw County, Iowa. Previously recorded in does not apply in County Records Office.

(Show reason for preparing this certificate, the evidence and detailed procedures used in establishing the corner positions and monumentation found or placed.)

Monument Description and Remarks: This certificate is prepared in accordance with Section 355.11 of the 1995 Code of Iowa. No previous certificate has been filed for this corner location. We set a 1/2" bar with cap RLS #11442 at the existing fence corner as the SSE 1/8 corner of Sec. 5-95-12. Property line fences from this corner run North, South, East and West. The distance to the SE corner (Fd. 3/4" Iron Bar) is close to that found in the County Engineer's Random Chaining Notes for the N. line of the E 1/2 of the SE 1/4 (20.5 chains as compared to our field measured distance of 1352.16').

Plan-View

(Show a minimum of three reference ties to durable physical objects, relevant monuments and physical conditions that will enable recovery of the corner.)



I hereby certify that the survey work was completed and this certificate was prepared by me or under my direct supervision and that I am a duly registered land surveyor under the laws of the State of Iowa.

Signature Lindsay Erdman
 Lindsay Erdman, P.E. and L.S.

Date: 4/27/96 Reg. No. 11442

My license will be renewed January 1, 1997

Section	Twp.	Range
SSE 1/8	5	95 12