

FILED 2005 - 0173

RECORDER'S OFFICE
CHICKASAW COUNTY, IOWA

Fee \$700
2005 JAN 28 AM 8 34

CINDY MESSERSMITH
COUNTY RECORDER

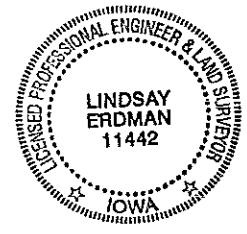
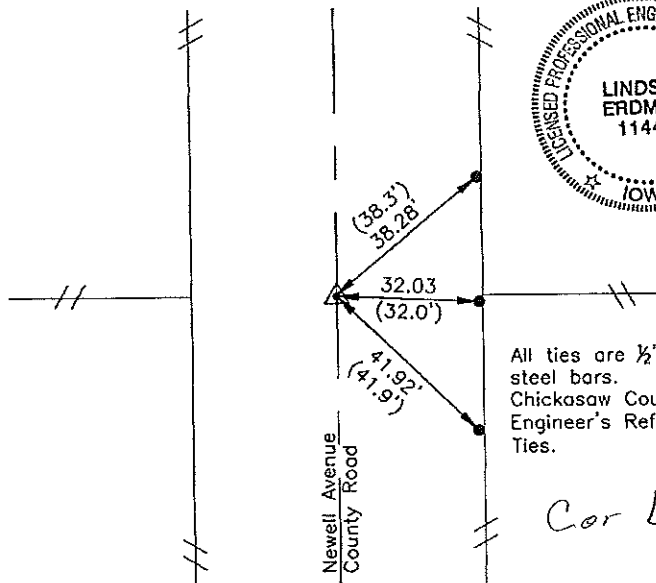
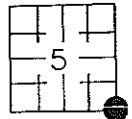
Prepared by: Erdman Engineering, P.C., 708 Commerce Drive, P.O. Box 246, Decorah, Iowa 52101 (563) 382-4194

United States Public Land Survey Corner Certificate
of

Land Survey Monuments situated in Section 5, Township 95, Range 12 West of
the 5th Principal Meridian in Chickasaw County, Iowa. Previously recorded in
does not apply in the county Recorder's Office.

Monument Description and Remarks: This certificate is prepared in accordance with
Section 193C of the Code of Iowa. No previous certificate has been filed for this
corner location. Based on Chickasaw County Engineer's Reference Ties we found three 1/2"
diameter steel bars used previously as tie markers. From these ties we found a 3/4"
diameter steel bar at the approximate centerline of the county road and in line with
the fence lines running east and west. County Engineer's Reference ties show that brick
crockery, and an iron pin had been found in 1965 and 1977. We used the bar as the
SE corner of Section 5, Township 95 North, Range 12 West.

Plan-View



All ties are 1/2" diameter
steel bars.
Chickasaw County
Engineer's Reference
Ties.

Cor B

I hereby certify that the survey work was completed
and this certificate was prepared by me or under my
direct supervision and that I am a duly registered
land surveyor under the laws of the State of Iowa.

Signature Lindsay Erdman
Lindsay Erdman, P.E. and P.L.S. Iowa License Number 11442

Date: 1/17/05

My license renewal date is December 31, 2008

Corner(s) to be Indexed

Corner	Section	Township	Range
SE	5	95	12