

Prepared by Herold - Reicks Surveying, 13 East Main Street, New Hampton, IA 56658, Ph. 641-394-2125 Fax. 641-394-2710

UNITED STATES PUBLIC LAND SURVEY CORNER CERTIFICATE

Land Survey Monuments situated in Section 9, Township 95 North, Range 12 West of the Fifth Principal Meridian, Chickasaw County, Iowa. 1.) Previously recorded in Bk. 2001, Pg. 2814 in the County Recorder's office. 2.) Not previously recorded in the County Recorder's Office.

This certificate is being prepared in compliance with Iowa Code Chapter 355.11 because:

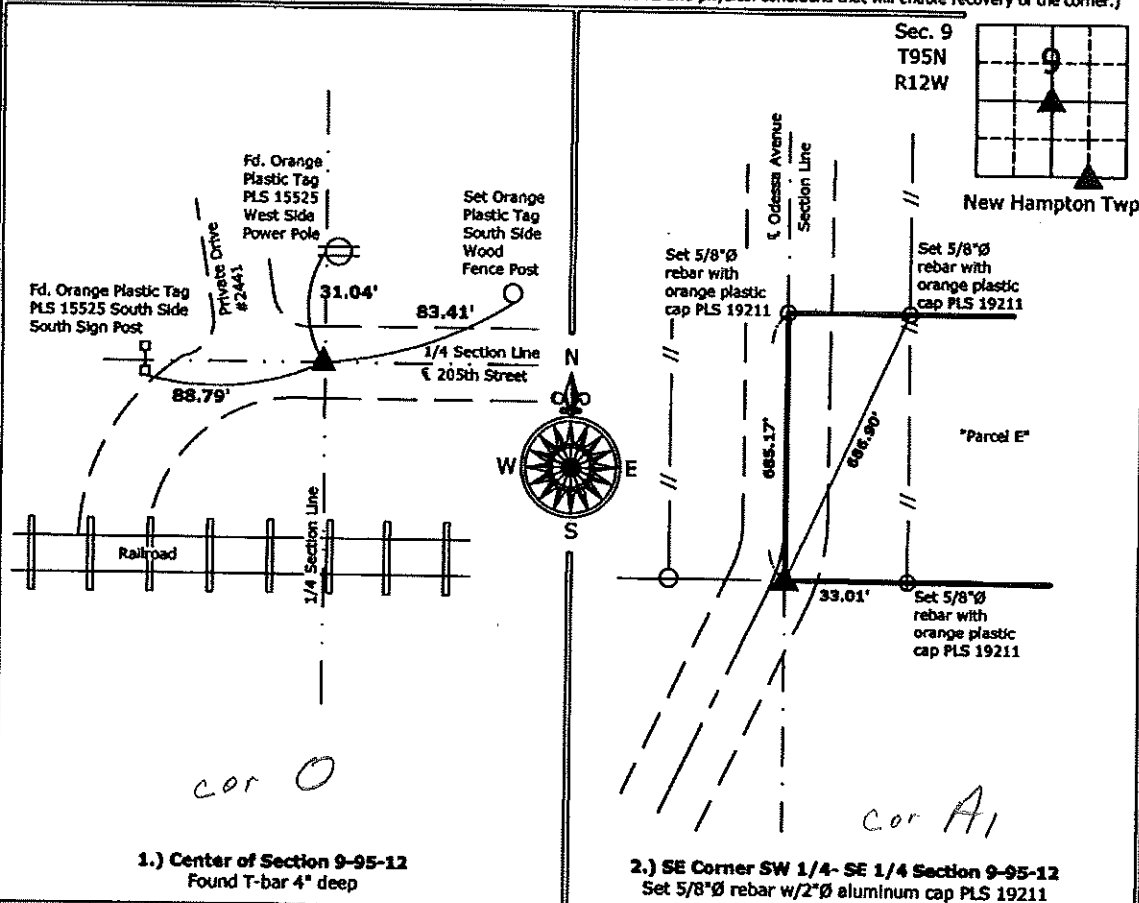
- 2.) There is no certificate on file for this corner.
- There are no longer three valid ties of record.
- 1.) There are changes to reference ties of record.
- There is change of monumentation of record.
- To clarify description of record monument (ties).

Monument Description and Remarks:

- 1.) **Center of Section:** Found T-bar 4" deep from information obtained from the previous Section Corner Certificate.
- 2.) **SE Corner SW 1/4-SE 1/4:** Set 5/8"Ø rebar with 2"Ø aluminum cap PLS 19211 online between and at the record distance from the SE and S 1/4 Corners per Plat of Survey made by Paul R. Herold, recorded as Document #2001-2816 on file in the Chickasaw County Recorder's office.

PLAN - VIEW

(Show a minimum of three reference ties to durable physical objects, relevant monuments and physical conditions that will enable recovery of the corner.)



I hereby certify that this land surveying document was prepared and the related survey work was performed by me or under my direct personal supervision and that I am a duly licensed Land Surveyor under the laws of the State of Iowa.

Kirk D. Reicks 3-2-10
 Kirk D. Reicks Date:
 License number 19211
 My license renewal date is December 31, 2010.
 Sheets covered by this seal: Individual sheet only

List Corners to be Indexed			
Corners	Section	Twp.	Range
CTR	9	95	12
SE-SW-SE	9	95	12

Project Number: 2009-157
 FB: Chickasaw County 2, Pgs. 27-28

File: S:\Projects\2009-157\dwg\2009-157.dwg, 1/8/2010 1:58:37 PM

FILED 2001-2814
RECORDER'S OFFICE
CHICKASAW COUNTY, IOWA

2001 DEC 26 AM 8 51

CINDY MESSERSMITH
COUNTY RECORDER

TeKIPPE ENGINEERING, P.C., 128 South Vine Street, West Union, Iowa 52175 Phone (563) 422-5131

UNITED STATES PUBLIC LAND SURVEY CORNER CERTIFICATE

OF

Land Survey Monuments situated in Section 9, Township 95 North, Range 12 West of the Fifth Principal Meridian, CHICKASAW County, Iowa. Previously recorded in none in County Recorder's Office. (book, page, document number, etc.)

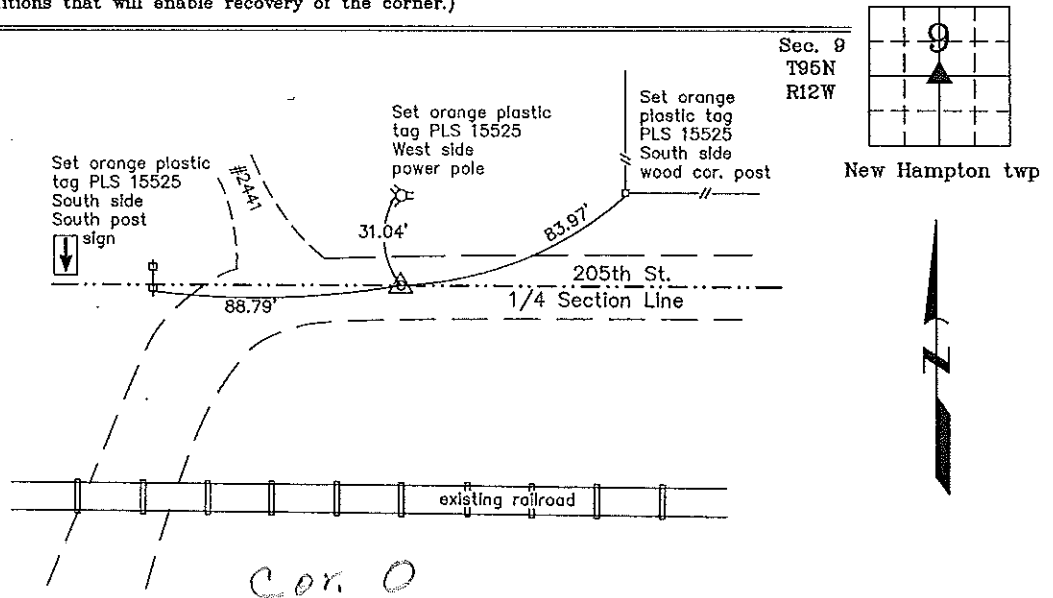
(Show reason for preparing this certificate, the evidence and detailed procedures used in establishing the corner positions and monumentation found or placed.)

Monument Description and Remarks: Center of Section 9 T95N R12W: Found T-bar with information obtained from a Survey and Plat made by Roger Hanson recorded in the Chickasaw County Recorder's Office on October 12, 1965 in Book 91, Pages 476-477.

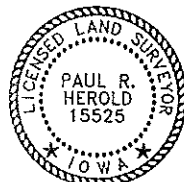
PLAN - VIEW

Project Number 01232.LS
FB. 46 H PG. 62-63

(Show a minimum of three reference ties to durable physical objects, relevant monuments and physical conditions that will enable recovery of the corner.)



Center of Section 9 T95N R12W
Found T-bar



I hereby certify that this land surveying document was prepared and the related survey work was performed by me or under my direct personal supervision and that I am a duly licensed Land Surveyor under the laws of the State of Iowa.

Paul R. Herold 12-21-01
Paul R. Herold Date
License number 15525
My license renewal date is December 31, 2002.
Sheets covered by this seal: Individual

List Corners to be Indexed			
Corners	Section	Twp.	Range
Center	9	95N	12W

Entered in field book 1-10-02

County Engineer's Copy