

2001 DEC 26 AM 8 53

CINDY MESSERSMITH
 COUNTY RECORDER

TeKIPPE ENGINEERING, P.C., 128 South Vine Street, West Union, Iowa 52175 Phone (563) 422-6131

UNITED STATES PUBLIC LAND SURVEY CORNER CERTIFICATE

OF

Land Survey Monuments situated in Section 9, Township 95 North, Range 12 West of the Fifth Principal Meridian, CHICKASAW County, Iowa. Previously recorded in none in County Recorder's Office.
(book, page, document number, etc.)

(Show reason for preparing this certificate, the evidence and detailed procedures used in establishing the corner positions and monumentation found or placed.)

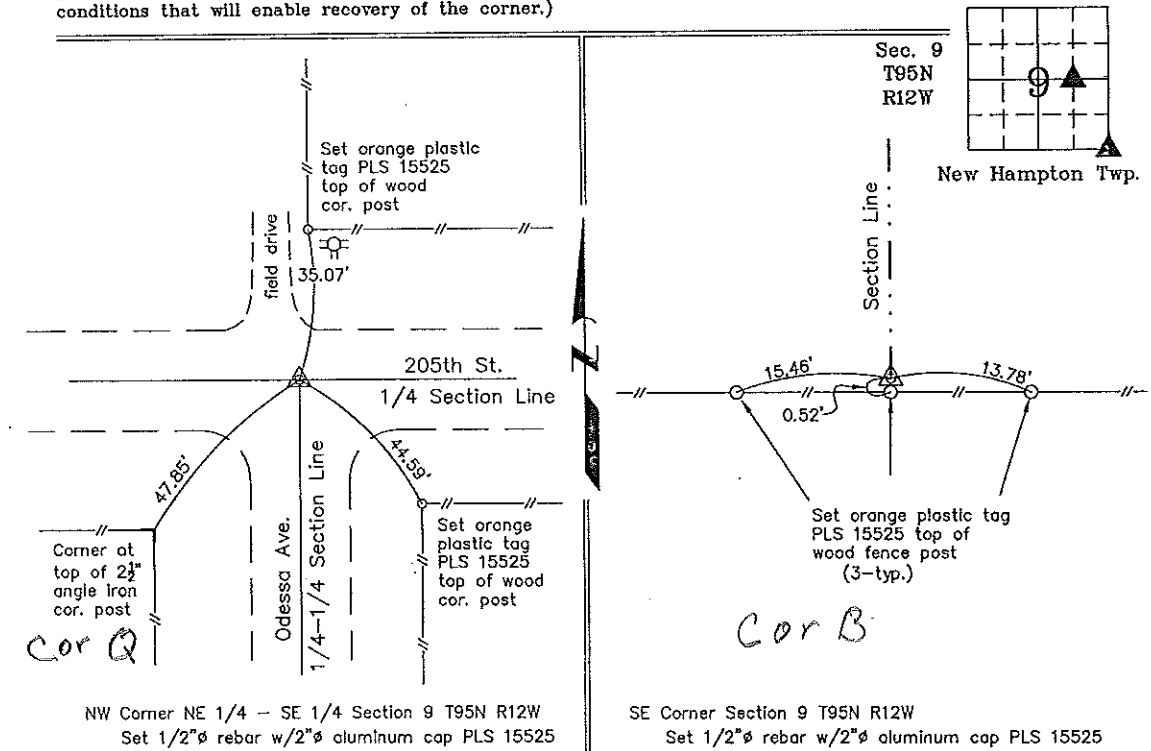
Monument Description and Remarks: NW Corner NE 1/4 - SE 1/4 Section 9 T95N R12W: Set 1/2"Ø rebar w/2"Ø aluminum cap PLS 15525 at the record location using data obtained from a Survey and Plat made by Lyle TeKippe on January 29, 1988.

SE Corner Section 9 T95N R12W: Set 1/2"Ø rebar w/2"Ø aluminum cap PLS 15525 at an existing division post after comparing the position to adjacent corners. There is no data available for this corner on record since the original survey.

PLAN - VIEW

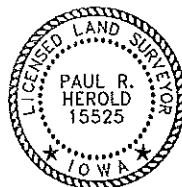
Project Number 01232.IS
 FB. 48 H PG. 62-63

(Show a minimum of three reference ties to durable physical objects, relevant monuments and physical conditions that will enable recovery of the corner.)



NW Corner NE 1/4 - SE 1/4 Section 9 T95N R12W
 Set 1/2"Ø rebar w/2"Ø aluminum cap PLS 15525

SE Corner Section 9 T95N R12W
 Set 1/2"Ø rebar w/2"Ø aluminum cap PLS 15525



I hereby certify that this land surveying document was prepared and the related survey work was performed by me or under my direct personal supervision and that I am a duly licensed Land Surveyor under the laws of the State of Iowa.

Paul R. Herold 12-21-01
 Paul R. Herold Date

License number 15525
 My license renewal date is December 31, 2002.
 Sheets covered by this seal: Individual

| List Corners to be Indexed | | | |
|----------------------------|---------|------|-------|
| Corners | Section | Twp. | Range |
| NW-NE-SE | 9 | 95N | 12W |
| SE | 9 | 95N | 12W |

Entered 1-10-02

County Engineer's
 Seal