

Section 10-94-13  
As referred to in  
Engr. Title Book

Chickasaw Co. Recorder  
Cindy Messersmith  
**Fee Book 2007-0971**  
05/14/2007 @1043AM  
SCC SEC COR CERT  
Book: Page: # Pages: 1  
Total Fees: \$7.00

Herold - Reicks Surveying, 25 1/2 East Main Street, Suite 204, New Hampton, IA 50659, Ph. 641-394-2725

**UNITED STATES PUBLIC LAND SURVEY CORNER CERTIFICATE**

Land Survey Monuments situated in:  
Section 1011, Township 94 North, Range 13 West of the Fifth Principal Meridian,  
Chickasaw County, Iowa. Previously recorded in 1.} None  
In County Recorder's Office. 2.} None

(Show reason for preparing this certificate, the evidence and detailed procedures used in establishing the corner positions and monumentation found or placed.)

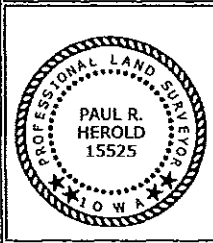
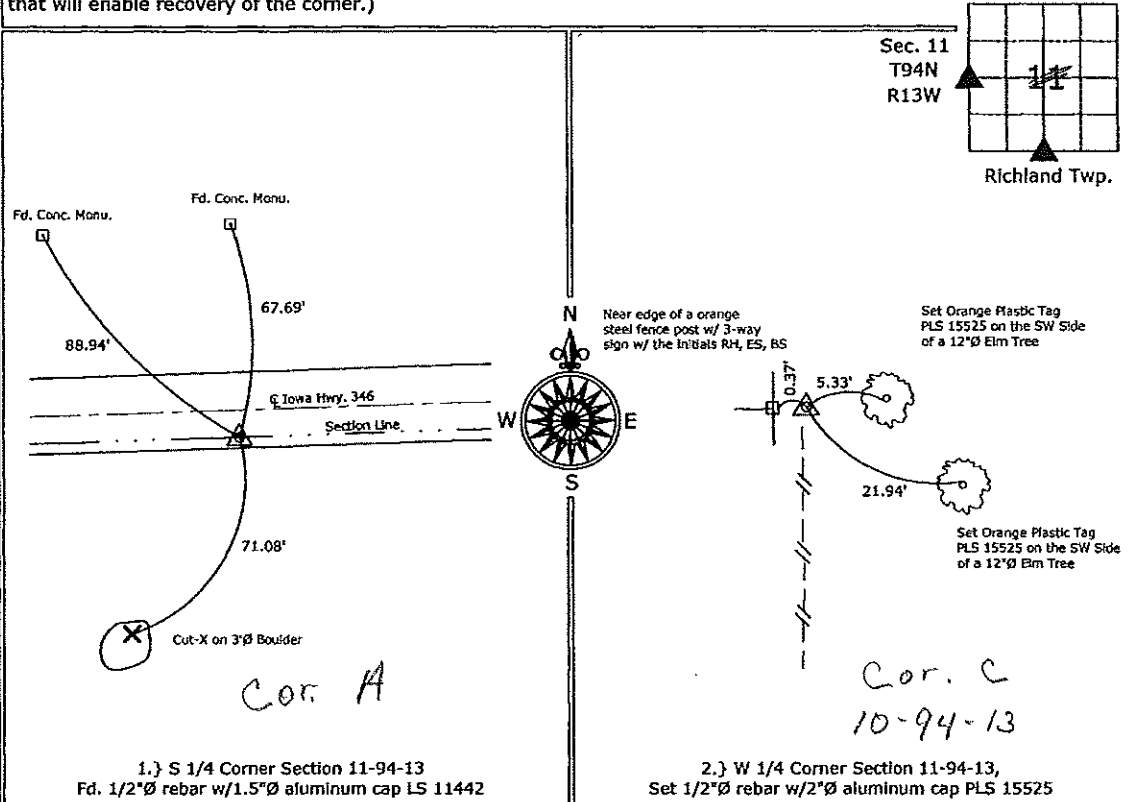
**Monument Description and Remarks:**

1.} S 1/4 Corner Section 11-94-13, Fd. 1/2"Ø rebar w/1.5"Ø aluminum cap LS 11442, 8.54' South of the Centerline of Iowa Hwy. 346, from information on a survey and plat made by Lindsay Erdman, recorded April 7, 2005, Doc. #2005-0608.

2.} W 1/4 Corner Section 11-94-13, Set 1/2"Ø rebar w/2"Ø aluminum cap PLS 15525 at the intersection of possession lines, as the only remaining evidence of the corner position.

**PLAN - VIEW**

(Show a minimum of three reference ties to durable physical objects, relevant monuments and physical conditions that will enable recovery of the corner.)



I hereby certify that this land surveying document was prepared and the related survey work was performed by me or under my direct personal supervision and that I am a duly licensed Land Surveyor under the laws of the State of Iowa.  
*Paul R. Herold* 5-12-07  
Paul R. Herold Date:  
License number 15525  
My license renewal date is December 31, 2008.  
Sheets covered by this seal: Sheet P1

List Corners to be Indexed			
Corners	Section	Twp.	Range
S 1/4	11	94	13
W 1/4	11	94	13

Project Number: 2007-033  
FB: Chickasaw County 1, Pgs. 13-20

File: S:\\_Projects\2007-033\dwg\2007-031-032-033.dwg, 5/14/2007 8:44:11 AM