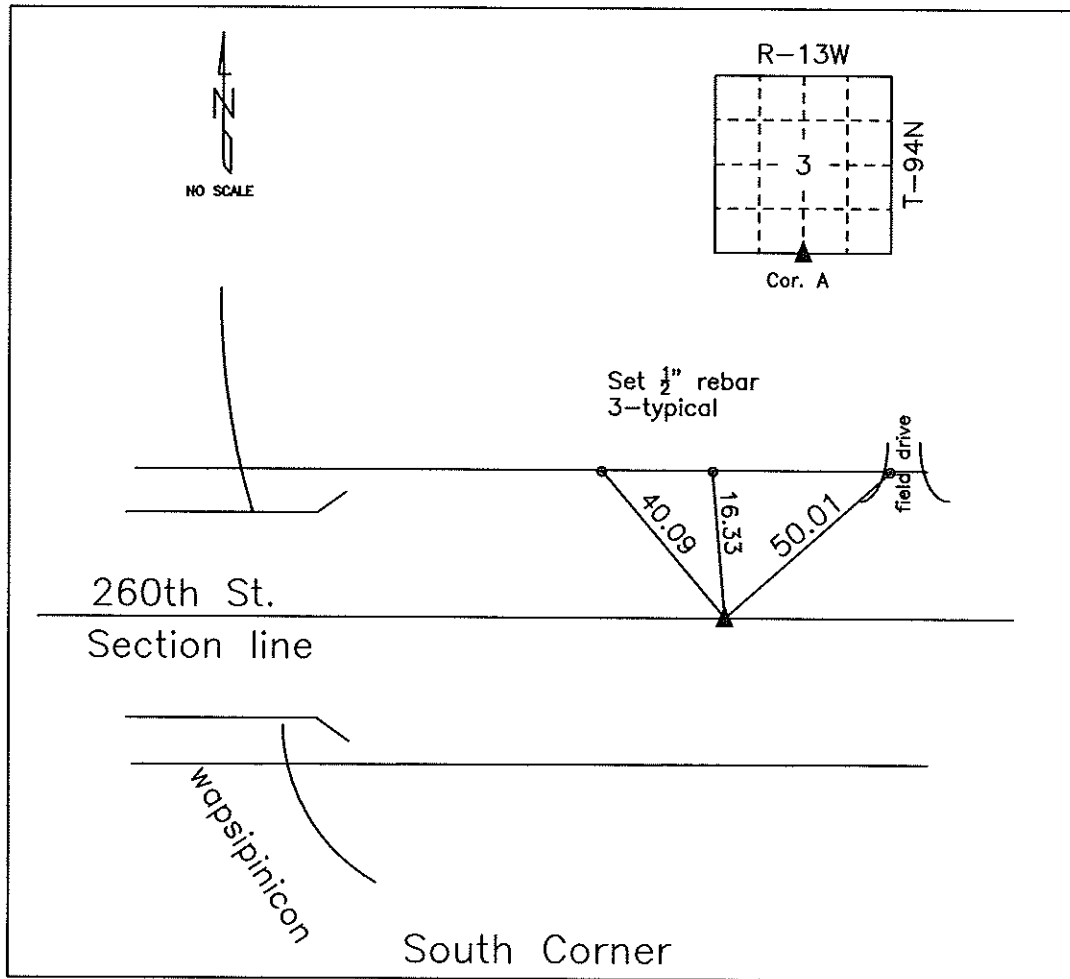


# COUNTY ENGINEER'S SECTION CORNER PRESERVATION RECORD

LAND SURVEY MONUMENT LOCATED IN SECTION 3, TOWNSHIP 94 N  
 NORTH, RANGE 13 W, OF THE 5TH P.M. Chickasaw COUNTY, IOWA  
 PREVIOUSLY RECORDED Filed 2001-1917



**MONUMENT DESCRIPTION AND NARRATIVE** Fnd 1/2" rebar w/2" alum. cap 11-4-08

Previously recorded by Paul Herold in Recorder's Office (file 2001-1917)

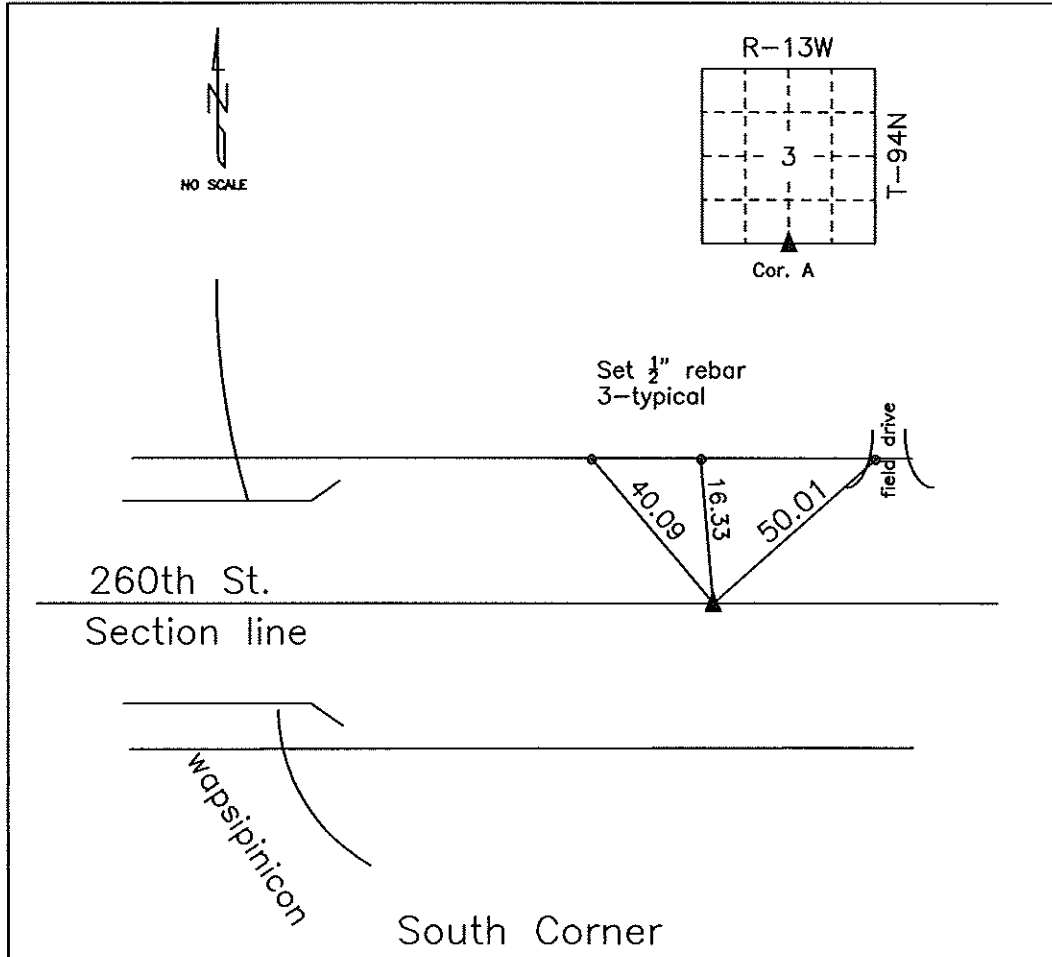
All ties are slope chained

I AM NOT A REGISTERED LAND SURVEYOR UNDER THE LAWS OF THE STATE OF IOWA

JIM FOSTER CHICKASAW CO. DATE: 08/06/09

# COUNTY ENGINEER'S SECTION CORNER PRESERVATION RECORD

LAND SURVEY MONUMENT LOCATED IN SECTION 3, TOWNSHIP 94 N  
 NORTH, RANGE 13 W, OF THE 5TH P.M. Chickasaw COUNTY, IOWA  
 PREVIOUSLY RECORDED Filed 2001-1917



**MONUMENT DESCRIPTION AND NARRATIVE** Fnd 1/2" rebar w/2" alum. cap 11-4-08

Previously recorded by Paul Herold in Recorder's Office (file 2001-1917)

All ties are slope chained

I AM NOT A REGISTERED LAND SURVEYOR UNDER THE LAWS OF THE STATE OF IOWA

JIM FOSTER CHICKASAW CO. DATE: 11/04/08

2003-0322

JUL 30

PREPARED BY ROBERT L. HOLZE MID-WEST LAND SURVEYORS, INC., P.O. BOX 1352, MASON CITY, IOWA 50402-1352, (641)-423-1451

UNITED STATES PUBLIC LAND SURVEY CORNER CERTIFICATE

OF

Land Survey Monuments situated in Section 3, Township 94N, Range 13W, of the Fifth Principal Meridian, CHICKASAW County, Iowa  
Previously recorded in \_\_\_\_\_ in County Recorder's Office.

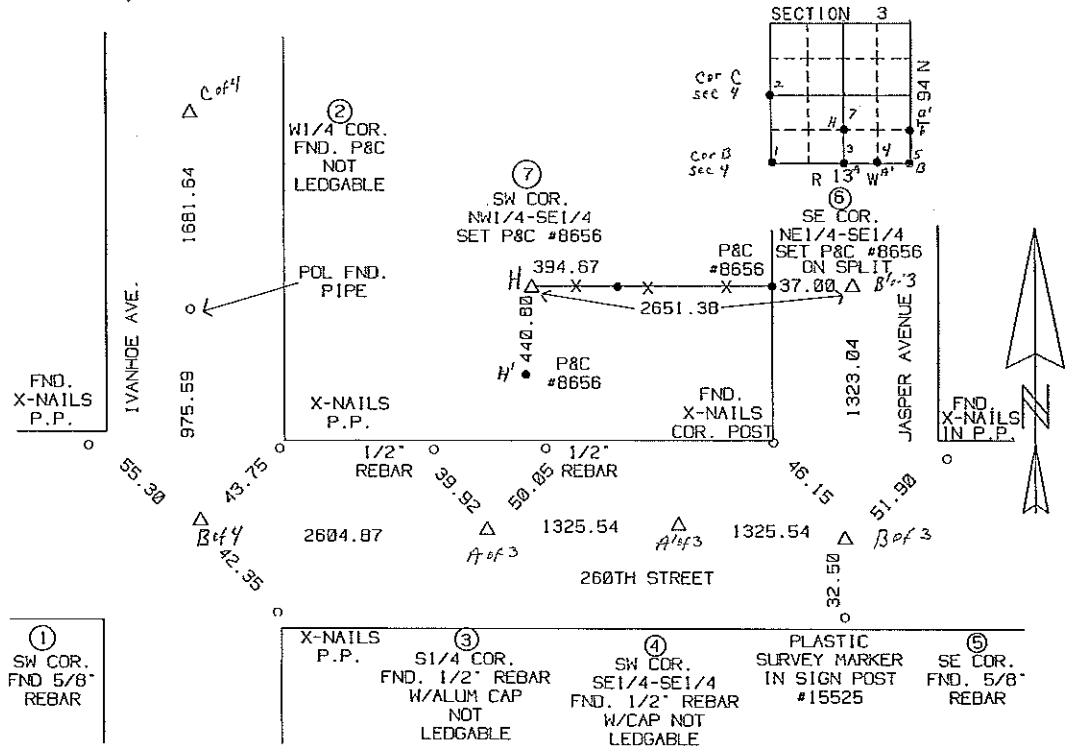
(book, page, document, number, etc.)

(Show reason for preparing this certificate, the evidence and detailed procedures used in establishing the corner positions and monumentation found or placed.)

- Monument Description and Remarks: (1) SW COR. FOUND 5/8" REBAR  
(2) W1/4 COR. FOUND P&C NOT LEDGABLE (7) SW COR. NW1/4-SE1/4 SET P&C #8656  
(3) S1/4 COR. FOUND 1/2" REBAR WITH ALUMINUM CAP NOT LEDGABLE  
(4) SOUTHWEST CORNER SE1/4-SE1/4 FOUND 1/2" REBAR WITH CAP NOT LEDGABLE  
(5) SOUTHEAST CORNER FOUND 5/8" REBAR  
(6) SOUTHEAST CORNER NE1/4-SE1/4 SET P&C #8656 ON SPLIT

PLAN-VIEW

(Show a minimum of three reference ties to durable physical objects, relevant monuments and physical conditions that will enable recovery of corner.)



I hereby certify that the survey work was completed and this certificate was prepared by me or under my direct personal supervision and that I am a duly Licensed and Surveyor under the laws of the State of Iowa.

Signature: Robert L. Holze  
 Robert L. Holze  
 Date: 1/16/2003 Reg. No. 8656

My registration renewal date is December 31, 2003.

List of Corners to be Indexed

Corners	Section	Twp.	Range
① SW COR.	3	94N	13W
② W1/4 COR.	3	94N	13W
③ S1/4 COR.	3	94N	13W
④ SW COR. SE1/4-SE1/4	3	94N	13W
⑤ SE COR.	3	94N	13W
⑥ SE COR NE1/4-SE1/4	3	94N	13W
⑦ SW COR NW1/4-SE1/4	3	94N	13W

Filed 2-20-03

Section 3-94-13  
As referred to in  
Engr. The Book

FILED 2001-1917  
RECORDER'S OFFICE  
CHICKASAW COUNTY, IOWA

2001 SEP 6 AM 9 24

CINDY MESSERSMITH  
COUNTY RECORDER

TeKIPPE ENGINEERING, P.C., 128 South Vine Street, West Union, Iowa 52176 Phone (563) 422-6131

UNITED STATES PUBLIC LAND SURVEY CORNER CERTIFICATE

OF 3

Land Survey Monuments situated in Section 10, Township 94 North, Range 13 West of the Fifth Principal Meridian, CHICKASAW County, Iowa. Previously recorded in none in County Recorder's Office. (book, page, document number, etc.)

(Show reason for preparing this certificate, the evidence and detailed procedures used in establishing the corner positions and monumentation found or placed.)

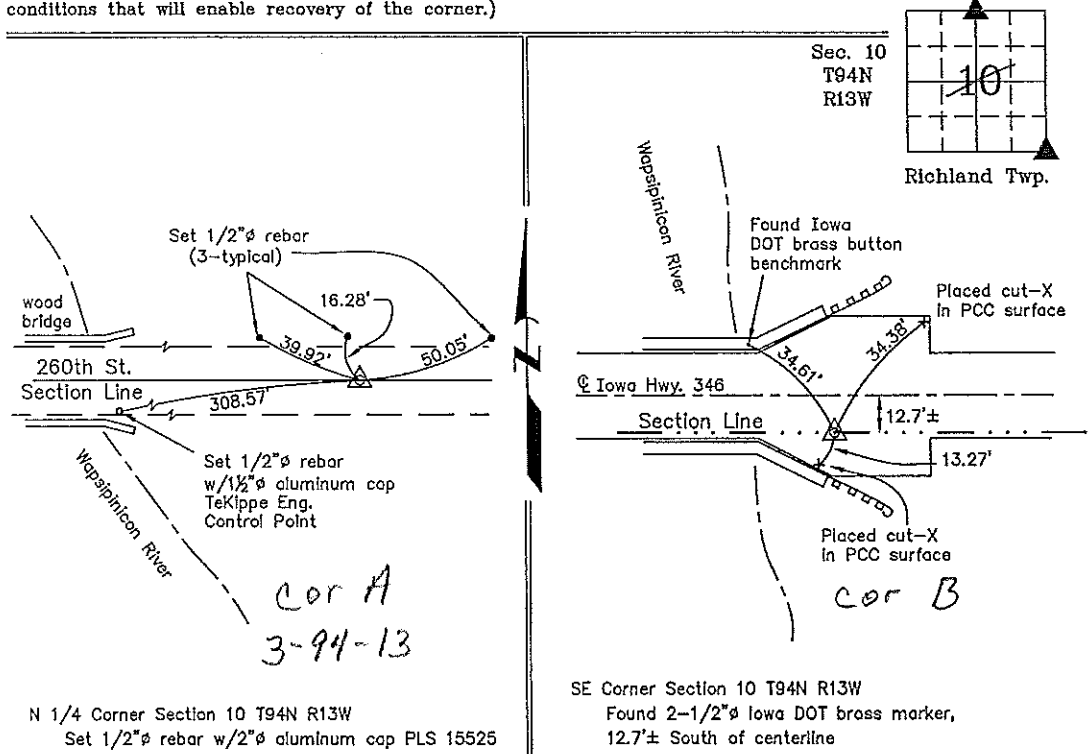
Monument Description and Remarks: N 1/4 Corner Section 10 T94N R13W: Set 1/2"Ø rebar w/2"Ø aluminum cap PLS 15525 by doubling the distance from the NE Corner to and across the NW Corner NE 1/4-NE 1/4.

SE Corner Section 10 T94N R13W: Found 2-1/2"Ø Iowa DOT brass marker, 12.7'± South of the centerline of Iowa Hwy. 346 with information obtained from the Chickasaw County Engineer's Office in the Field Book for Richland Twp. Corner Ties, Section 10, Corner B.

PLAN - VIEW

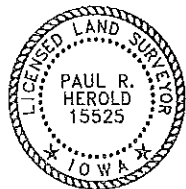
Project Number 01162.LS  
FB. 491 PG. 31-34

(Show a minimum of three reference ties to durable physical objects, relevant monuments and physical conditions that will enable recovery of the corner.)



N 1/4 Corner Section 10 T94N R13W  
Set 1/2"Ø rebar w/2"Ø aluminum cap PLS 15525

SE Corner Section 10 T94N R13W  
Found 2-1/2"Ø Iowa DOT brass marker,  
12.7'± South of centerline



I hereby certify that this land surveying document was prepared and the related survey work was performed by me or under my direct personal supervision and that I am a duly licensed Land Surveyor under the laws of the State of Iowa.

*Paul R. Herold* 9-5-01  
Paul R. Herold Date  
License number 15525  
My license renewal date is December 31, 2002.  
Sheets covered by this seal: Individual

List Corners to be Indexed			
Corners	Section	Twp.	Range
N 1/4	10	94N	13W
SE	10	94N	13W

Filed 9-10-01

County Engineer