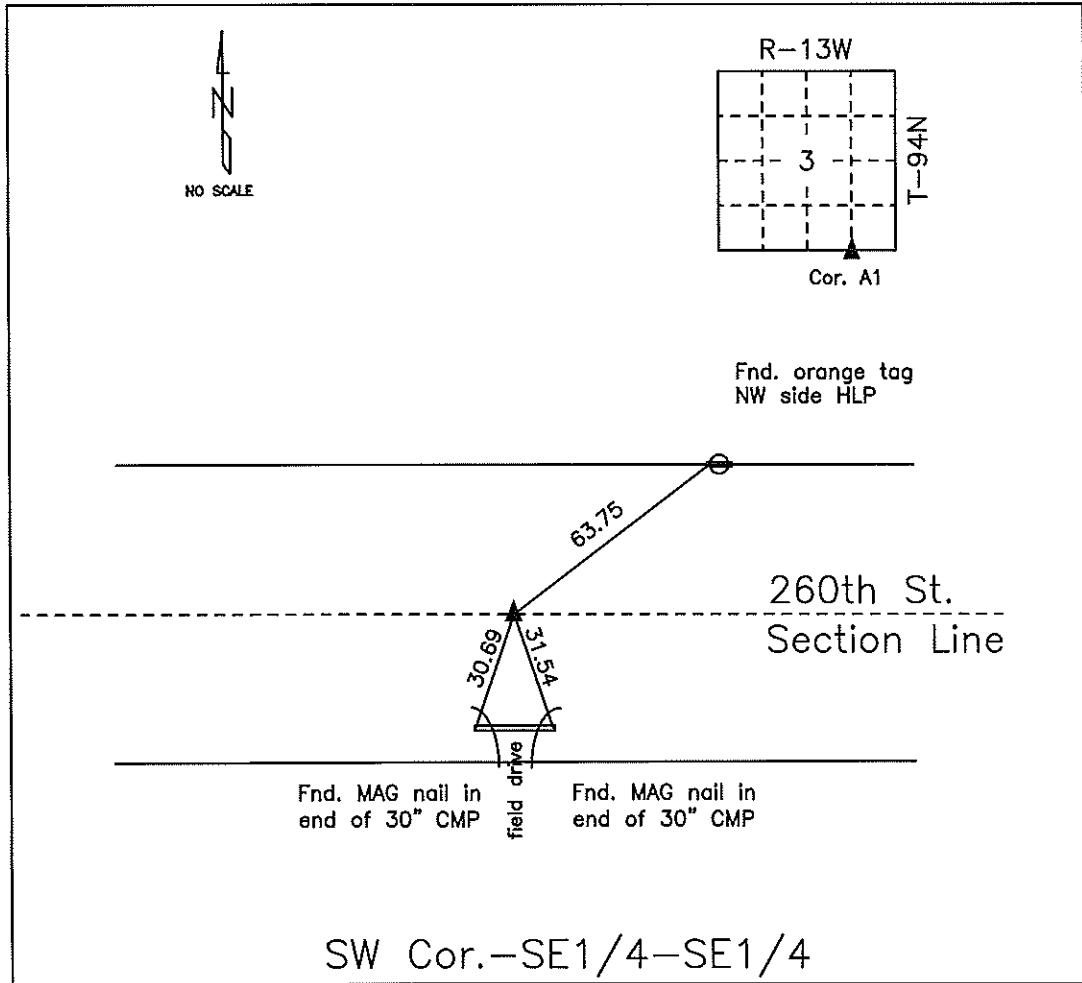


COUNTY ENGINEER'S SECTION CORNER PRESERVATION RECORD

LAND SURVEY MONUMENT LOCATED IN SECTION 3, TOWNSHIP 94 N
NORTH, RANGE 13 W, OF THE 5TH P.M. Chickasaw COUNTY, IOWA
PREVIOUSLY RECORDED Filed 2001-1918



MONUMENT DESCRIPTION AND NARRATIVE Fnd 3/4" iron shaft

Previously recorded 9-6-01 by Paul Herold (PLS 15525) & is filed as 2001-1918

All ties are slope chained

I AM NOT A REGISTERED LAND SURVEYOR UNDER THE LAWS OF THE STATE OF IOWA

JIM FOSTER CHICKASAW CO. DATE: 11/4/08

2003-0322

JUL 30

PREPARED BY ROBERT L. HOLZE MID-WEST LAND SURVEYORS, INC., P.O. BOX 1352, MASON CITY, IOWA 50402-1352, (641)-423-1451

UNITED STATES PUBLIC LAND SURVEY CORNER CERTIFICATE

OF

Land Survey Monuments situated in Section 3, Township 94N, Range 13W, of the Fifth Principal Meridian, CHICKASAW County, Iowa
Previously recorded in _____ in County Recorder's Office.

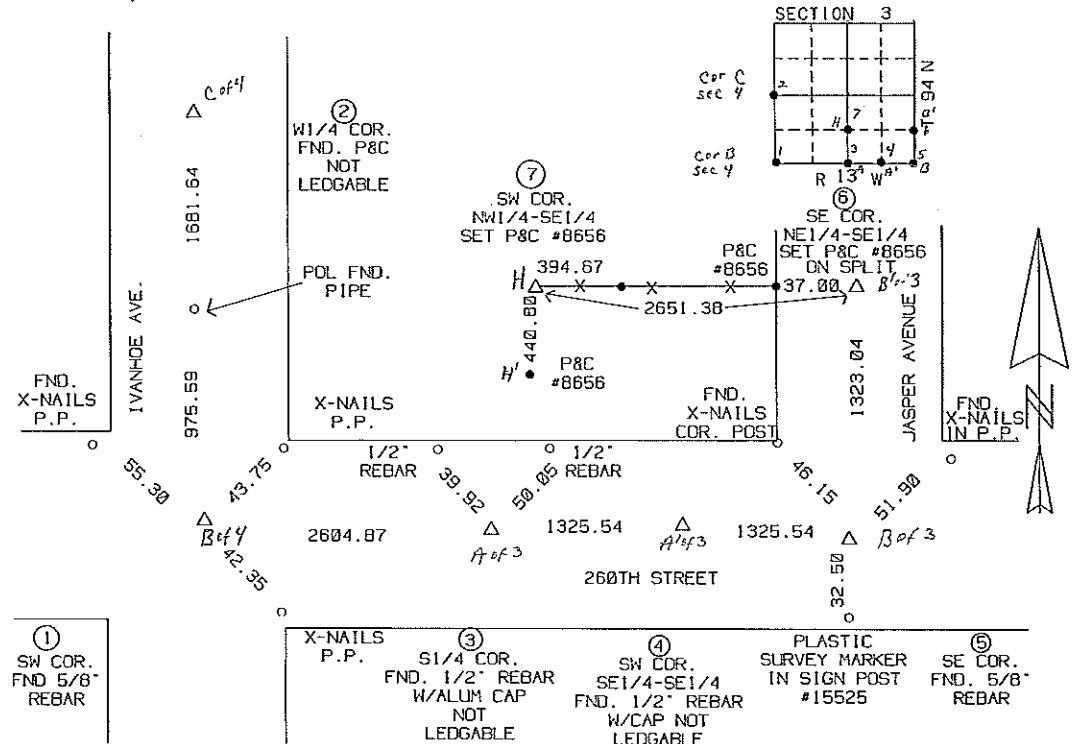
(book, page, document, number, etc.)

(Show reason for preparing this certificate, the evidence and detailed procedures used in establishing the corner positions and monumentation found or placed.)

- Monument Description and Remarks:
- ① SW COR. FOUND 5/8" REBAR
 - ② W1/4 COR. FOUND P&C NOT LEDGABLE
 - ③ S1/4 COR. FOUND 1/2" REBAR WITH ALUMINUM CAP NOT LEDGABLE
 - ④ SW COR. SE1/4-SE1/4 FOUND 1/2" REBAR WITH CAP NOT LEDGABLE
 - ⑤ SOUTHWEST CORNER FOUND 5/8" REBAR
 - ⑥ SOUTHWEST CORNER NE1/4-SE1/4 SET P&C #8656 ON SPLIT

PLAN-VIEW

(Show a minimum of three reference ties to durable physical objects, relevant monuments and physical conditions that will enable recovery of corner.)



I hereby certify that the survey work was completed and this certificate was prepared by me or under my direct personal supervision and that I am a duly Licensed and Surveyor under the laws of the State of Iowa.

Signature: *Robert L. Holze*
Robert L. Holze

Date: 1/16/2003 Reg. No. 8656

My registration renewal date is December 31, 2003.

List of Corners to be Indexed

Corners	Section	Twp.	Range
① SW COR.	3	94N	13W
② W1/4 COR.	3	94N	13W
③ S1/4 COR.	3	94N	13W
④ SW COR. SE1/4-SE1/4	3	94N	13W
⑤ SE COR.	3	94N	13W
⑥ SE COR NE1/4-SE1/4	3	94N	13W
⑦ SW COR NW1/4-SE1/4	3	94N	13W

Filed 2-20-03

Section 3-94-13
As referred to in
Engg. Title Book

FILED 2001-1918
RECORDER'S OFFICE
CHICKASAW COUNTY, IOWA

2001 SEP 6 AM 9 27

CINDY MESSERSMITH
COUNTY RECORDER

TeKIPPE ENGINEERING, P.C., 128 South Vine Street, West Union, Iowa 52176 Phone (563) 422-5131

UNITED STATES PUBLIC LAND SURVEY CORNER CERTIFICATE

OF 3
Land Survey Monuments situated in Section 10, Township 94 North, Range 13 West of the Fifth Principal Meridian, CHICKASAW County, Iowa.
Previously recorded in (1) none (2) Book 153, Page 419 in County Recorder's Office.
(book, page, document number, etc.)

(Show reason for preparing this certificate, the evidence and detailed procedures used in establishing the corner positions and monumentation found or placed.)

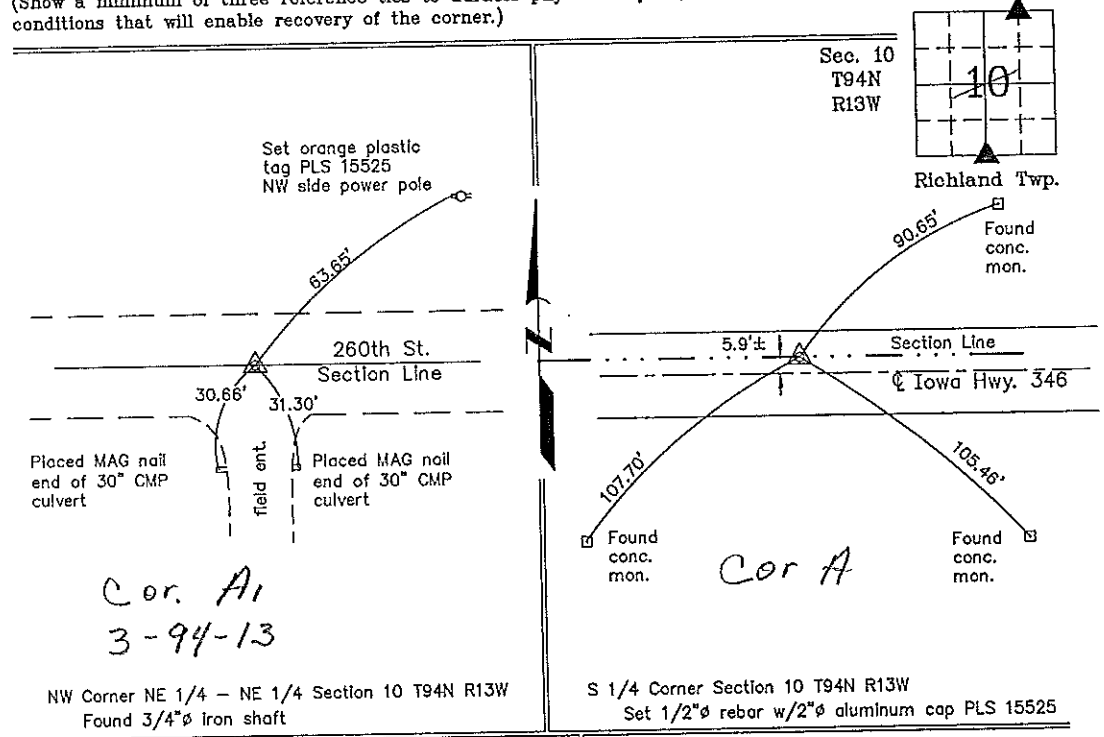
Monument Description and Remarks: (1) NW Corner NE 1/4-NE 1/4 Section 10 T94N R13W: Found 3/4" ϕ iron shaft with information obtained from a Survey and Plat made by Harold H. Blessing recorded in the Chickasaw County Recorder's Office on April 18, 1979 in Deed Book 119, Page 362-365.

(2) S 1/4 Corner Section 10 T94N R13W: Previous Corner Monument was missing. Set 1/2" ϕ rebar w/2" ϕ aluminum cap PLS 15525 using distances from found concrete monuments noted on the previous Section Corner Certificate recorded in the Chickasaw County Recorder's Office in Deed Book 153, Page 419.

PLAN - VIEW

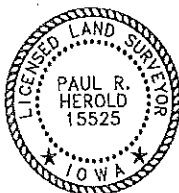
Project Number 01182.LS
FR 481 PG. 31-34

(Show a minimum of three reference ties to durable physical objects, relevant monuments and physical conditions that will enable recovery of the corner.)



NW Corner NE 1/4 - NE 1/4 Section 10 T94N R13W
Found 3/4" ϕ Iron shaft

S 1/4 Corner Section 10 T94N R13W
Set 1/2" ϕ rebar w/2" ϕ aluminum cap PLS 15525



I hereby certify that this land surveying document was prepared and the related survey work was performed by me or under my direct personal supervision and that I am a duly licensed Land Surveyor under the laws of the State of Iowa.

Paul R. Herold 9-5-01
Paul R. Herold Date
License number 15525
My license renewal date is December 31, 2002.
Sheets covered by this seal: Individual

List Corners to be Indexed			
Corners	Section	Twp.	Range
NW-NE-NE	10	94N	13W
S 1/4	10	94N	13W

Filed 9-10-01

County Engineer
A.L.