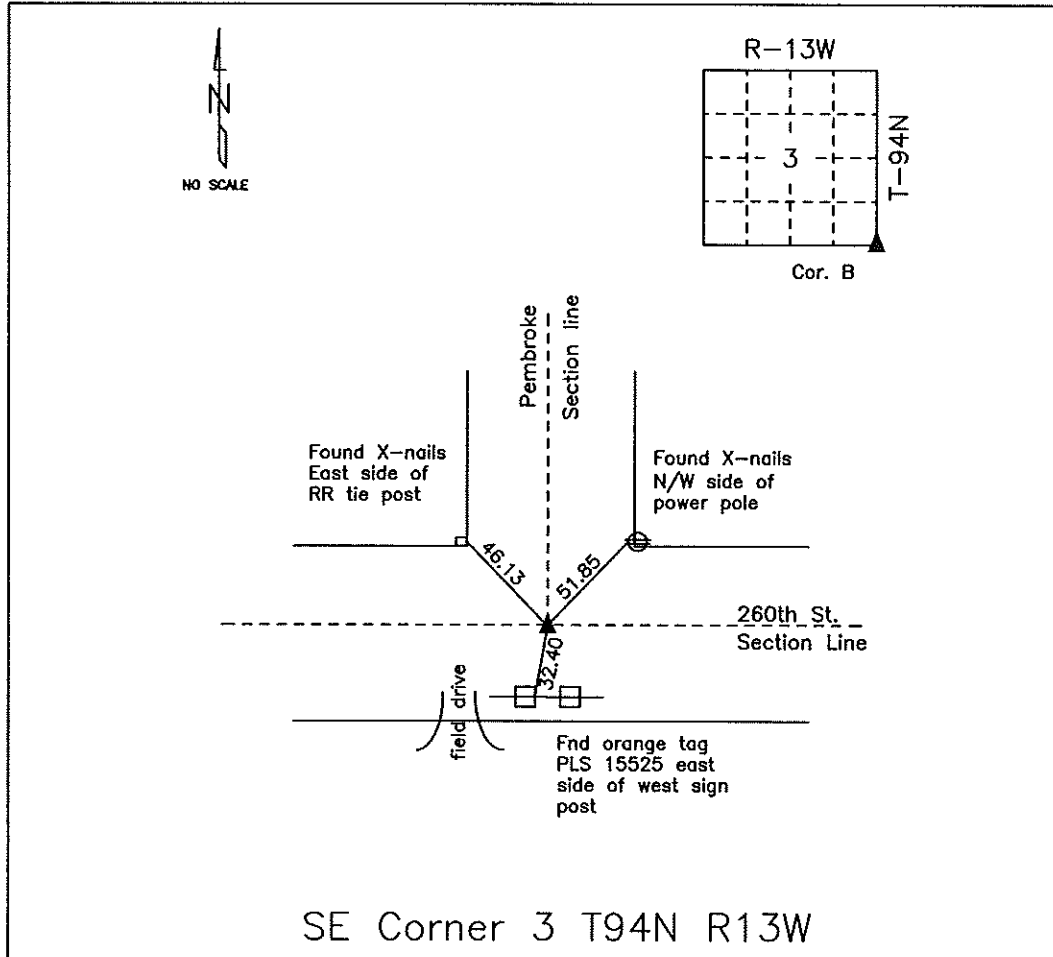


COUNTY ENGINEER'S SECTION CORNER PRESERVATION RECORD

LAND SURVEY MONUMENT LOCATED IN SECTION 3, TOWNSHIP 94 N
NORTH, RANGE 13 W, OF THE 5TH P.M. Chickasaw COUNTY, IOWA
PREVIOUSLY RECORDED BOOK 2003, PAGE 0554



MONUMENT DESCRIPTION AND NARRATIVE Found 5/8" iron pin

Previously recorded by Paul Herold (PLS 15525) in Book 2003, Page 0554 as the N/E corner of section

10, T94N, R13W

All ties are slope chained

I AM NOT A REGISTERED LAND SURVEYOR UNDER THE LAWS OF THE STATE OF IOWA

JIM FOSTER CHICKASAW CO. DATE: 11/04/08

Section 3-94-13
As referred to in
Engr. Tie Book

FILED 2003-0554
RECORDER'S OFFICE
CHICKASAW COUNTY, IOWA

2003 FEB 24 AM 9 47

CINDY MESSERSMITH
COUNTY RECORDER

TeKIPPE ENGINEERING, P.C., 128 South Vine Street, West Union, Iowa 52176 Phone (563) 422-5131

CORRECTIVE

UNITED STATES PUBLIC LAND SURVEY CORNER CERTIFICATE

OF ³
Land Survey Monuments situated in Section 10, Township 94 North, Range 13 West of the Fifth Principal Meridian, CHICKASAW County, Iowa.
Previously recorded in Book 2001, Page 1916 in County Recorder's Office.
(book, page, document number, etc.)

(Show reason for preparing this certificate, the evidence and detailed procedures used in establishing the corner positions and monumentation found or placed.)

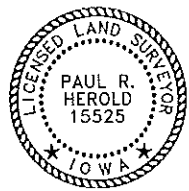
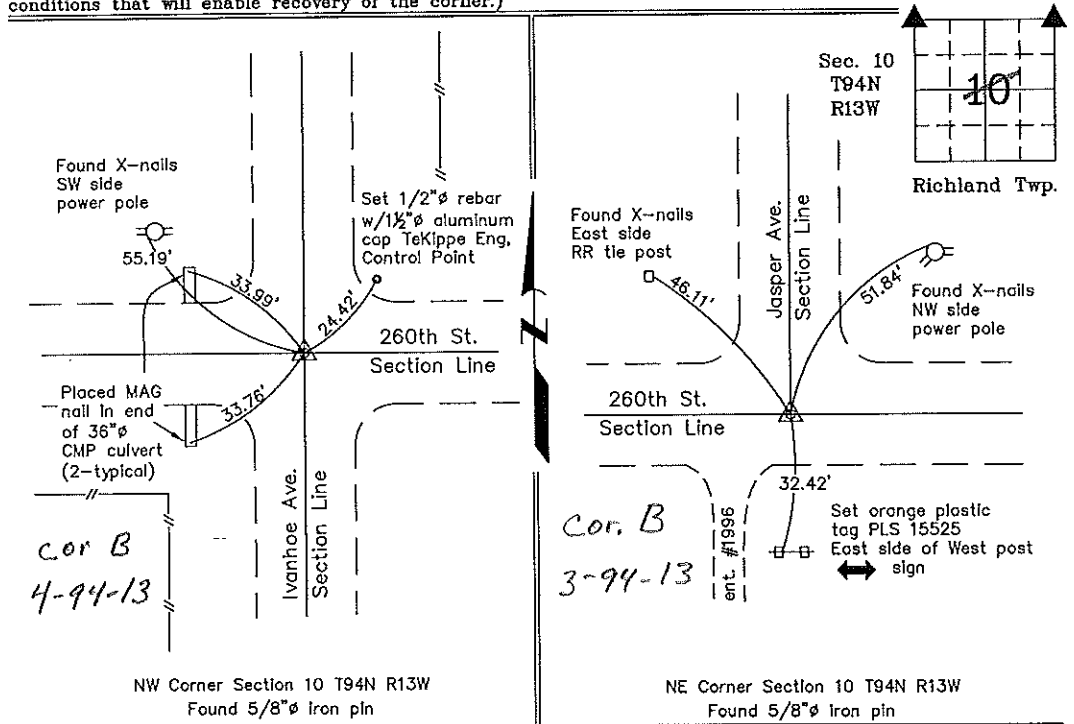
Monument Description and Remarks: **NW Corner Section 10 T94N R13W:** Found 5/8"Ø iron pin with information obtained from the Chickasaw County Engineer's Office in the Field Book for Richland Township Corner Ties, Section 4, Corner B.
NE Corner Section 10 T94N R13W: Found 5/8"Ø iron pin with information obtained from the Chickasaw County Engineer's Office in the Field Book for Richland Township Corner Ties, Section 3, Corner B.

Note: This Corrective Corner Certificate is being filed to correct the title at the bottom of the plan view diagram (they were reversed)

PLAN - VIEW

Project Number 01162.LS
FB 461 Pg. 31-34

(Show a minimum of three reference ties to durable physical objects, relevant monuments and physical conditions that will enable recovery of the corner.)



I hereby certify that this land surveying document was prepared by me or under my direct personal supervision and that I am a duly licensed Land Surveyor under the laws of the State of Iowa.
Paul R. Herold 2-20-03
Paul R. Herold Date
License number 15525
My license renewal date is December 31, 2004.
Sheets covered by this seal: Individual

List Corners to be Indexed			
Corners	Section	Twp.	Range
NE	10	94N	13W
NW	10	94N	13W

Original File 9-10-01 Re-issue 2-28-03
X:\Section Corners\Sec. 10\10-94-13ae.dwg

County Engineer's
Office

2003-0322

JUL 30

PREPARED BY ROBERT L. HOLZE MID-WEST LAND SURVEYORS, INC., P.O. BOX 1352, MASON CITY, IOWA 50402-1352, (641)-423-1451

UNITED STATES PUBLIC LAND SURVEY CORNER CERTIFICATE

OF

Land Survey Monuments situated in Section 3, Township 94N, Range 13W, of the Fifth Principal Meridian, CHICKASAW County, Iowa
Previously recorded in _____ in County Recorder's Office.

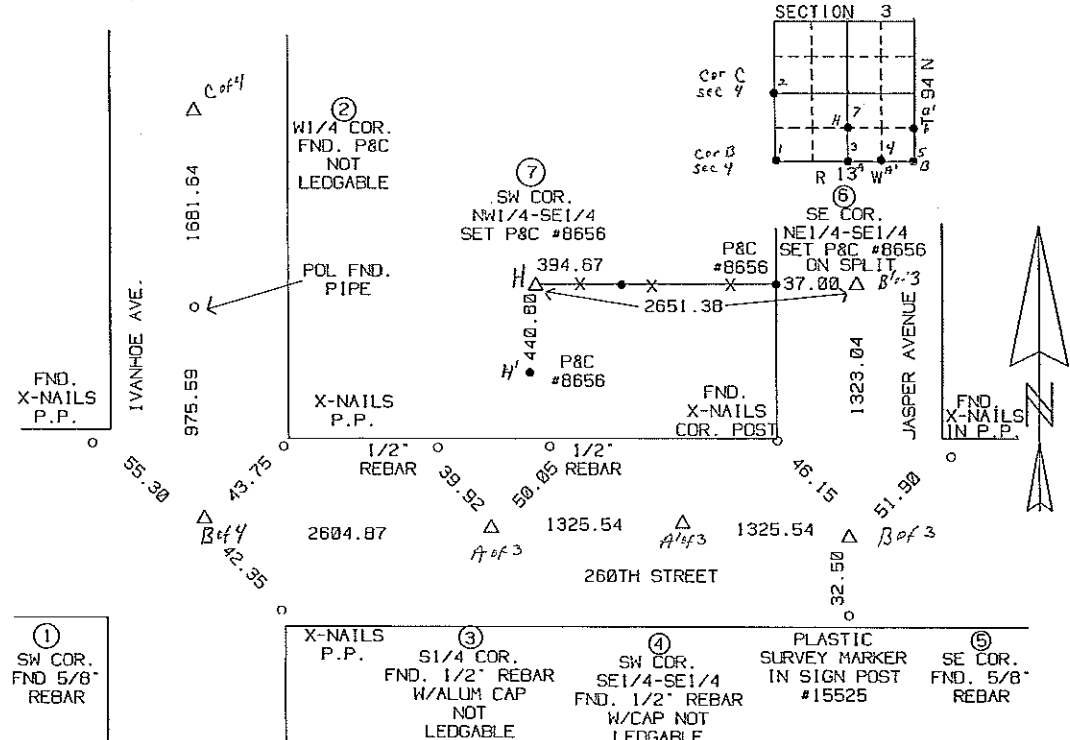
(book, page, document, number, etc.)

(Show reason for preparing this certificate, the evidence and detailed procedures used in establishing the corner positions and monumentation found or placed.)

- Monument Description and Remarks:
- ① SW COR. FOUND 5/8" REBAR
 - ② W1/4 COR. FOUND P&C NOT LEDGABLE
 - ③ S1/4 COR. FOUND 1/2" REBAR WITH ALUMINUM CAP NOT LEDGABLE
 - ④ SW COR. SE1/4-SE1/4 FOUND 1/2" REBAR WITH CAP NOT LEDGABLE
 - ⑤ SOUTHWEST CORNER FOUND 5/8" REBAR
 - ⑥ SOUTHWEST CORNER NE1/4-SE1/4 SET P&C #8656 ON SPLIT
 - ⑦ SW COR. NW1/4-SE1/4 SET P&C #8656

PLAN-VIEW

(Show a minimum of three reference ties to durable physical objects, relevant monuments and physical conditions that will enable recovery of corner.)



I hereby certify that the survey work was completed and this certificate was prepared by me or under my direct personal supervision and that I am a duly Licensed and Surveyor under the laws of the State of Iowa.

Signature: *Robert L. Holze*
Robert L. Holze

Date: 1/16/2003 Reg. No. 8656

My registration renewal date is December 31, 2003.

List of Corners to be Indexed

Corners	Section	Twp.	Range
① SW COR.	3	94N	13W
② W1/4 COR.	3	94N	13W
③ S1/4 COR.	3	94N	13W
④ SW COR. SE1/4-SE1/4	3	94N	13W
⑤ SE COR.	3	94N	13W
⑥ SE COR NE1/4-SE1/4	3	94N	13W
⑦ SW COR NW1/4-SE1/4	3	94N	13W

Filed 2-20-03