

Section 2-94-13
As referred to in
Engr. Tie Book

UNITED STATES PUBLIC LAND SURVEY CORNER CERTIFICATE

OF 2

Land Survey Monuments situated in Section 11, Township 94N, Range 13W, of the Fifth Principal Meridian, Chickasaw County, Iowa. Previously recorded in _____ does not apply in County Recorders Office. (book, page, document number, etc.)

(Show reason for preparing this certificate, the evidence and detailed procedures used in establishing the corner positions and monumentation found or placed.)

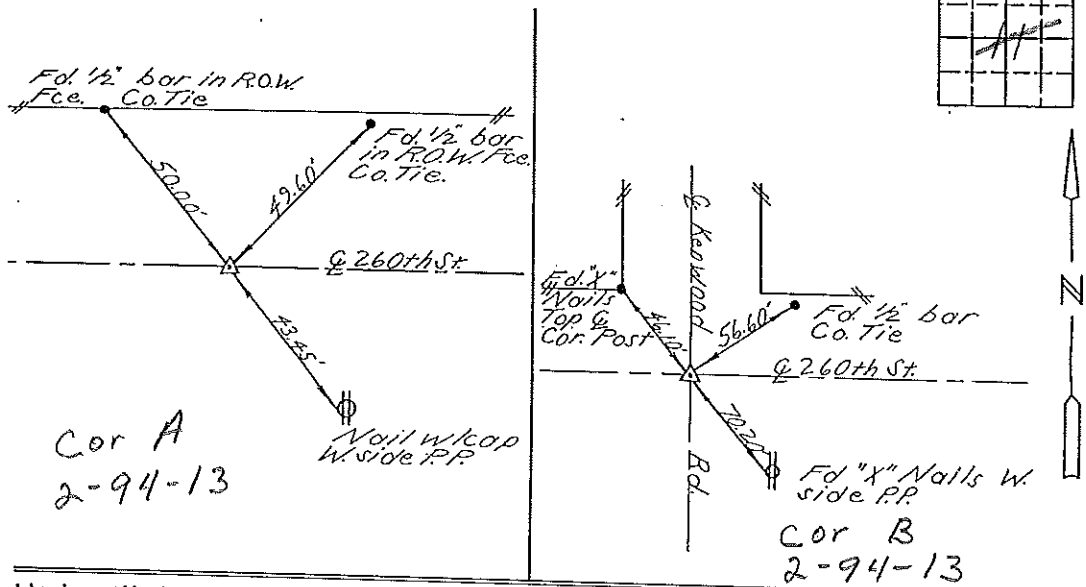
Monument Description and Remarks: see below

PLAN - VIEW

(Show a minimum of three reference ties to durable physical objects, relevant monuments and physical conditions that will enable recovery of the corner.)

N¹/₄ Cor. Fd. 1/2" bar 2" down

NE. Cor. Fd. 1/2" bar down 6"



I hereby certify that the survey work was completed and this certificate was prepared by me or under by direct personal supervision and that I am a duly registered land surveyor under the laws of the State of Iowa.

Signature: Lindsay Erdman
Lindsay Erdman, P.E. & L.S.

Date: 12-6-94 Reg. No. 11442

My license will be renewed January 1, 1995.

SEAL



Corners	List Corners to be Indexed Section	Twp.	Range.
N ¹ / ₄	11	94	13
NE.	11	94	13