

Chickasaw Co. Recorder
 Cindy Messersmith
Fee Book 2007-0969
 05/14/2007 @1036AM
 SCC: SEC COR CERT
 Book: Page: # Pages: 1
 Total Fees: \$7.00

Herold - Recks Surveying, 25 1/2 East Main Street, Suite 204, New Hampton, IA 50659, Ph. 641-394-2725

UNITED STATES PUBLIC LAND SURVEY CORNER CERTIFICATE

Land Survey Monuments situated in:
 Section 2, Township 94 North, Range 13 West of the Fifth Principal Meridian,
Chickasaw County, Iowa. Previously recorded in 1.} None
 in County Recorder's Office. 2.} None

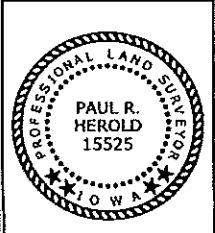
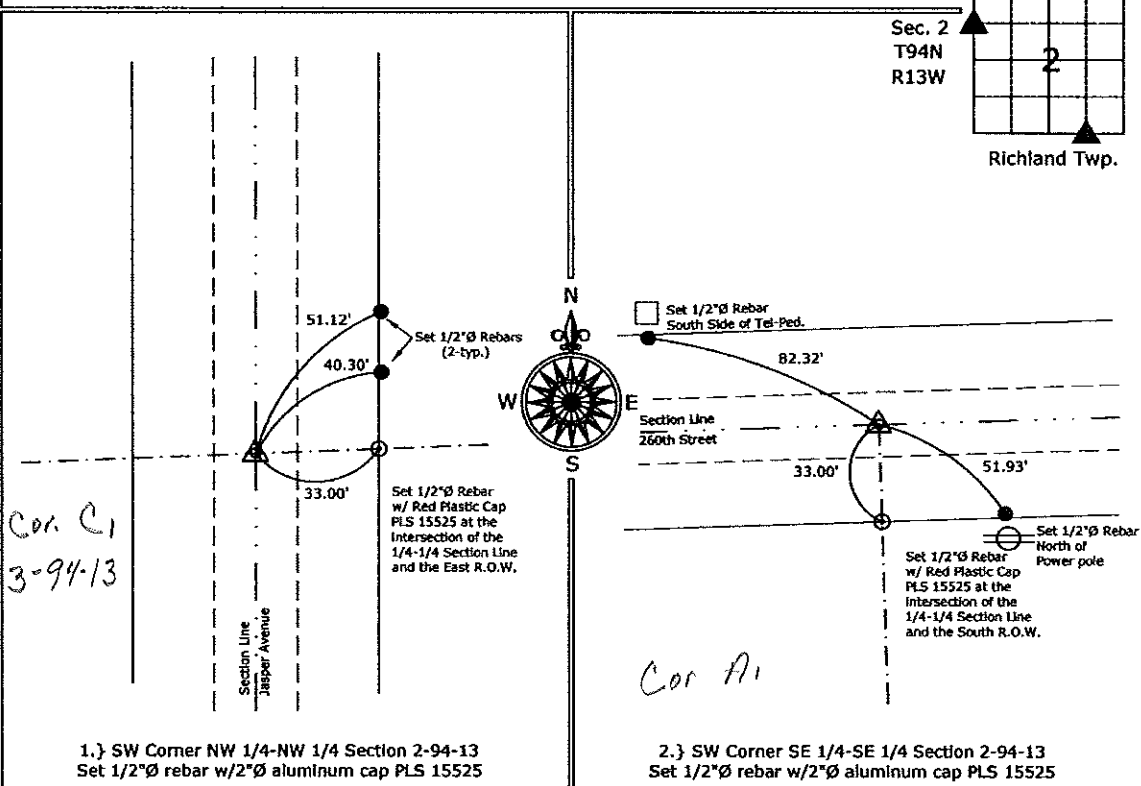
(Show reason for preparing this certificate, the evidence and detailed procedures used in establishing the corner positions and monumentation found or placed.)

Monument Description and Remarks:

- 1.) SW Corner NW 1/4-NW 1/4 Section 2-94-13, Set 1/2"Ø rebar w/2"Ø aluminum cap PLS 15525 by single proportion between the W 1/4 Corner and the NW Corner.
- 2.) SW Corner SE 1/4-SE 1/4 Section 2-94-13, Set 1/2"Ø rebar w/2"Ø aluminum cap PLS 15525 midway and on line between the S 1/4 Corner and the SE Corner.

PLAN - VIEW

(Show a minimum of three reference ties to durable physical objects, relevant monuments and physical conditions that will enable recovery of the corner.)



I hereby certify that this land surveying document was prepared and the related survey work was performed by me or under my direct personal supervision and that I am a duly licensed Land Surveyor under the laws of the State of Iowa.

Paul R. Herold 5-12-07
 Paul R. Herold Date:
 License number 15525
 My license renewal date is December 31, 2008.
 Sheets covered by this seal: Sheet P1

List Corners to be Indexed			
Corners	Section	Twp.	Range
SW-NW-NW	2	94	13
SW-SE-SE	2	94	13

Project Number: 2007-033
 FB: Chickasaw County 1, Pgs. 13-20

File: S:_Projects\2007\2007-033\dwg\2007-031-032-033.dwg, 5/14/2007 9:12:25 AM