

Section 2-94-13
As referred to in
Engr. The Book

Herold - Reicks Surveying, 25 1/2 East Main Street, Suite 204, New Hampton, IA 50659, Ph. 641-394-2725

UNITED STATES PUBLIC LAND SURVEY CORNER CERTIFICATE

Land Survey Monuments situated in Section 1², Township 94 North, Range 13 West of the Fifth Principal Meridian, Chickasaw County, Iowa. Previously recorded in (1) Bk. 168, Pg. 242, (2) N/A in County Recorder's Office.
(book, page, document number, etc.)

(Show reason for preparing this certificate, the evidence and detailed procedures used in establishing the corner positions and monumentation found or placed.)

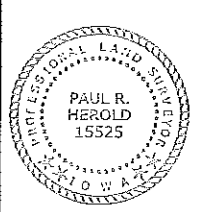
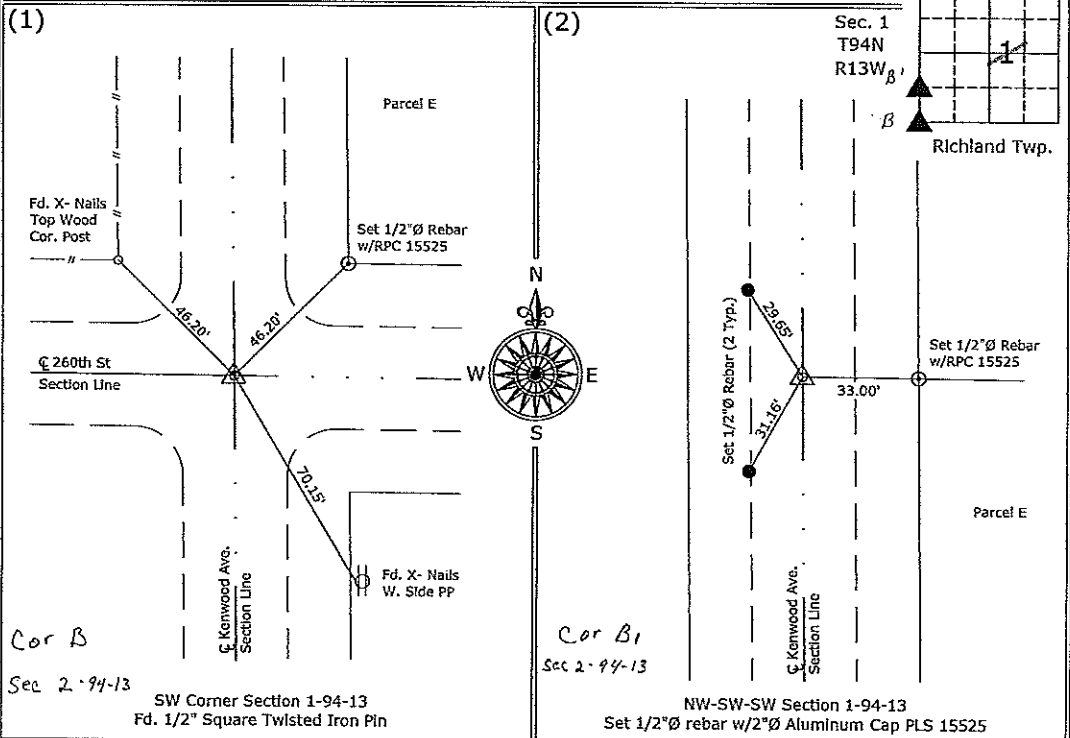
Monument Description and Remarks:

SW Corner - Found 1/2" square twisted Iron pin, 1 previous corner tie was missing, added new tie.

NW Corner of the SW 1/4-SW1/4 - Set 1/2"Ø rebar with 2"Ø aluminum cap PLS 15525 midway and online between the SW and West 1/4 corners.

PLAN - VIEW

(Show a minimum of three reference ties to durable physical objects, relevant monuments and physical conditions that will enable recovery of the corner.)



I hereby certify that this land surveying document was prepared and the related survey work was performed by me or under my direct personal supervision and that I am a duly licensed Land Surveyor under the laws of the State of Iowa.
Paul R. Herold 1-30-07
Paul R. Herold Date:
License number 15525
My license renewal date is December 31, 2008.
Sheets covered by this seal: Sheet P1

List Corners to be Indexed			
Corners	Section	Twp.	Range
SW	1	94	13
NW-SW-SW	1	94	13

S:\Projects\2007\2007-002\dwg\2007-002.dwg
Project Number:2007-002
FB: Chickasaw County 1, Pg. 1

Section 2-94-13
 As referred to in
 Engr. Tie Book

UNITED STATES PUBLIC LAND SURVEY CORNER CERTIFICATE

Land Survey Monuments situated in Section 1², Township 94 North, Range 13 West, of the Fifth Principal Meridian, Chickasaw County, Iowa.

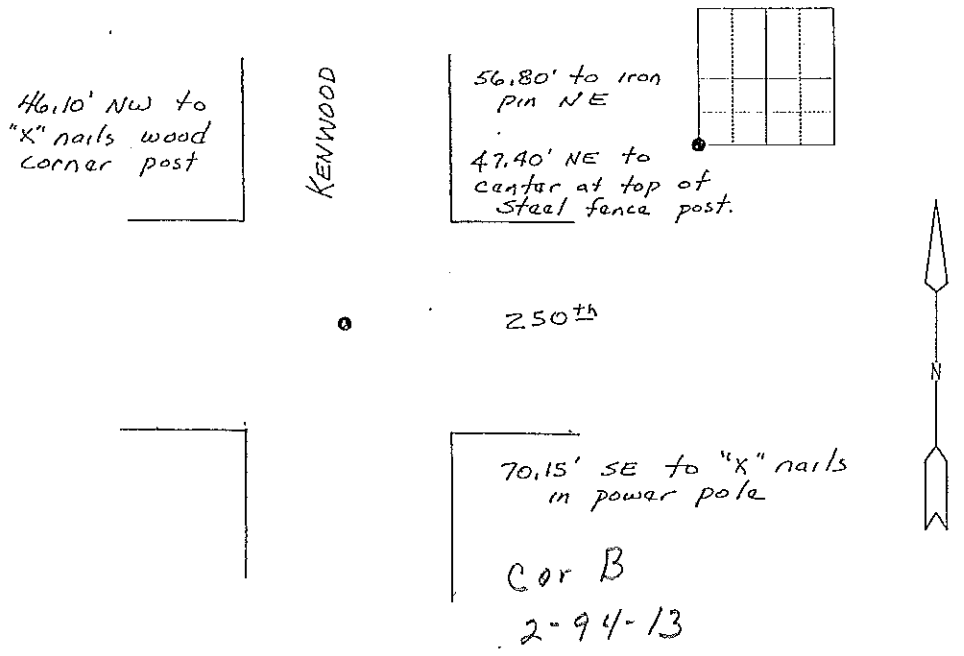
Previously recorded in None in County Recorder's Office.
 (book, page, document number, etc.)

(Show reason for preparing this certificate, the evidence and detailed procedures used in establishing the corner positions and monumentation found or placed.)

Monument Description and Remarks: Found 1/2" twisted iron pin at center of road intersections

PLAN - VIEW

(Show a minimum of three reference ties to durable physical objects, relevant monuments and physical conditions that will enable recovery of the corner)



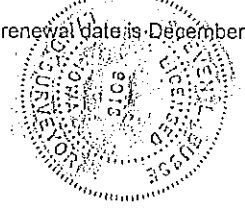
I hereby certify that the survey work was completed and this land surveying document was prepared by me or under my direct personal supervision and that I am a duly licensed land surveyor under the laws of the state of Iowa

Signature: Steve Busse
 Name typed or printed STEVE BUSSE

Date: 7/18/98 Reg. No. 9018

My license renewal date is December 31, 1998

SEAL



Corners	List Corners to be Indexed		
	Section	Twp	Range
SW cor.	1	94	13

Section 2-94-13
As referred to in
Engr. Tie Book

UNITED STATES PUBLIC LAND SURVEY CORNER CERTIFICATE

OF 2

Land Survey Monuments situated in Section 11, Township 94N, Range 13W, of the Fifth Principal Meridian, Chickasaw County, Iowa. Previously recorded in does not apply in County Recorders Office. (book, page, document number, etc.)

(Show reason for preparing this certificate, the evidence and detailed procedures used in establishing the corner positions and monumentation found or placed.)

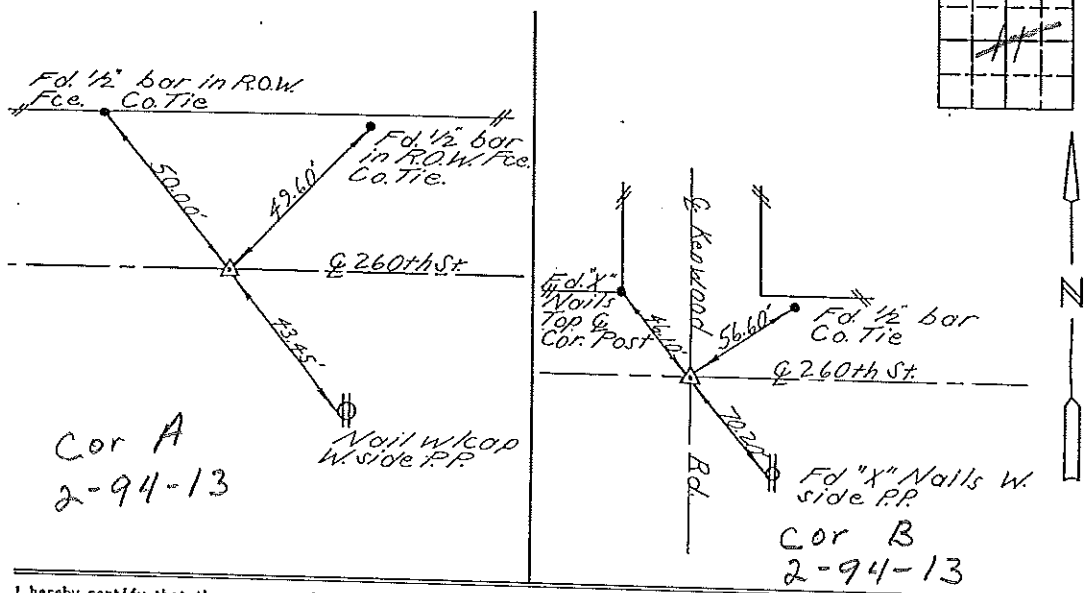
Monument Description and Remarks: see below

PLAN - VIEW

(Show a minimum of three reference ties to durable physical objects, relevant monuments and physical conditions that will enable recovery of the corner.)

N 1/4 Cor. Fd. 1/2" bar 2" down

NE Cor. Fd. 1/2" bar down 6"



I hereby certify that the survey work was completed and this certificate was prepared by me or under by direct personal supervision and that I am a duly registered land surveyor under the laws of the State of Iowa.

Signature: Lindsay Erdman
Lindsay Erdman, P.E. & L.S.

Date: 12-6-94 Reg. No. 11442

My license will be renewed January 1, 1995.

SEAL



Corners	List Corners to be Indexed Section	Twp.	Range.
N 1/4	11	94	13
NE.	11	94	13