

Herold - Reicks Surveying, 25 1/2 East Main Street, Suite 204, New Hampton, IA 50659, Ph. 641-394-2725

### UNITED STATES PUBLIC LAND SURVEY CORNER CERTIFICATE

Land Survey Monuments situated in Section 1, Township 94 North, Range 13 West of the Fifth Principal Meridian, Chickasaw County, Iowa.  
 Previously recorded in (1) Bk. 150, Pg. 112, (2) N/A in County Recorder's Office.  
(book, page, document number, etc.)

(Show reason for preparing this certificate, the evidence and detailed procedures used in establishing the corner positions and monumentation found or placed.)

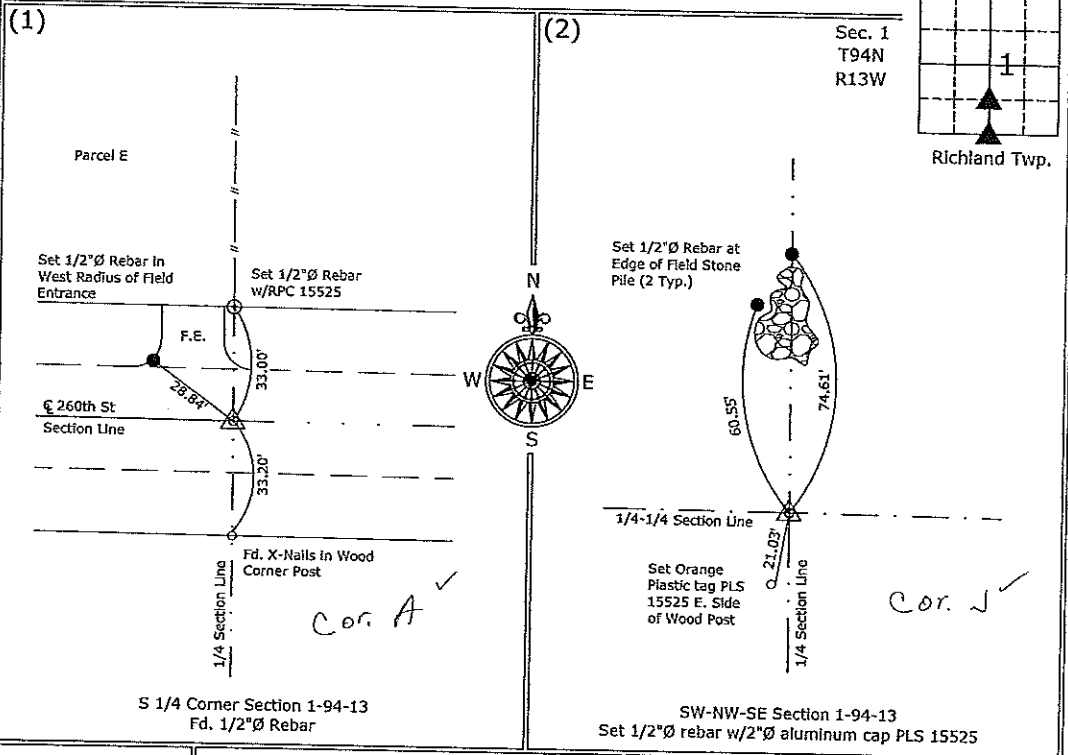
**Monument Description and Remarks:**

South 1/4 Corner - Found 1/2"Ø rebar, only 1 previous corner tie remained, added 2 new ties.

SW Corner of the NW 1/4-SE 1/4 - Set 1/2"Ø rebar with 2"Ø aluminum cap PLS 15525 midway and online between the Center and South 1/4 corners.

### PLAN - VIEW

(Show a minimum of three reference ties to durable physical objects, relevant monuments and physical conditions that will enable recovery of the corner.)



I hereby certify that this land surveying document was prepared and the related survey work was performed by me or under my direct personal supervision and that I am a duly licensed Land Surveyor under the laws of the State of Iowa.  
*Paul R. Herold* 1-30-07  
 Paul R. Herold Date:  
 License number 15525  
 My license renewal date is December 31, 2008.  
 Sheets covered by this seal: Sheet P1

List Corners to be Indexed			
Corners	Section	Twp.	Range
S 1/4	1	94	13
SW-NW-SE	1	94	13

S:\Projects\2007\2007-002\dwg\2007-002.dwg  
 Project Number: 2007-002  
 FB: Chickasaw County 1, Pg. 1

ENG. C. DU

# UNITED STATES PUBLIC LAND SURVEY CORNER CERTIFICATE

OF

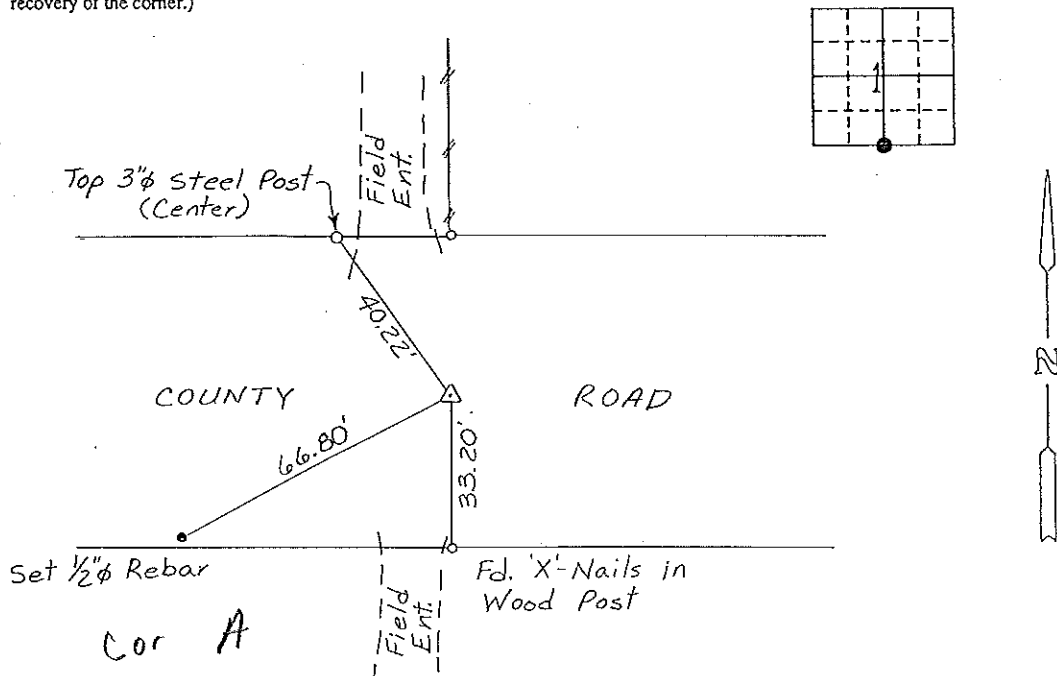
Land Survey Monuments situated in Section 1, Township 94N, Range 13W, of the Fifth Principal Meridian, CHICKASAW County, Iowa. Previously recorded in (NONE) in County Recorder's Office.

(Show reason for preparing this certificate, the evidence and detailed procedures used in establishing the corner positions and monumentation found or placed.)

Monument Description and Remarks: S 1/4 CORNER, SECTION 1-T94N-R13W:  
FOUND 1/2" φ REBAR.

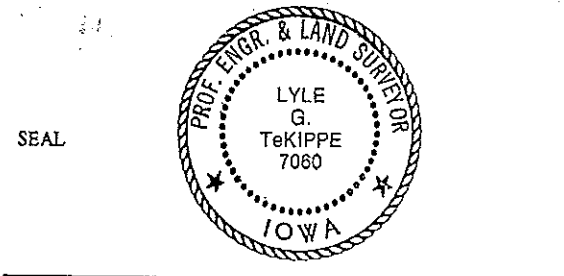
### PLAN - VIEW

(Show a minimum of three reference ties to durable physical objects, relevant monuments and physical conditions that will enable recovery of the corner.)



I hereby certify that the survey work was completed and this certificate was prepared by me or under my direct personal supervision and that I am a duly registered land surveyor under the laws of the state of Iowa.

Signature: Lyle G. TeKippe  
Name typed or printed: Lyle G. TeKippe  
Date: 8-3-92 Reg. No. 7060



Corners	List Corners to be Indexed Section	Twp	Range
S 1/4	1	94N	13W

*Placed  
Bar  
5/92*