

UNITED STATES PUBLIC LAND SURVEY CORNER CERTIFICATE

OF

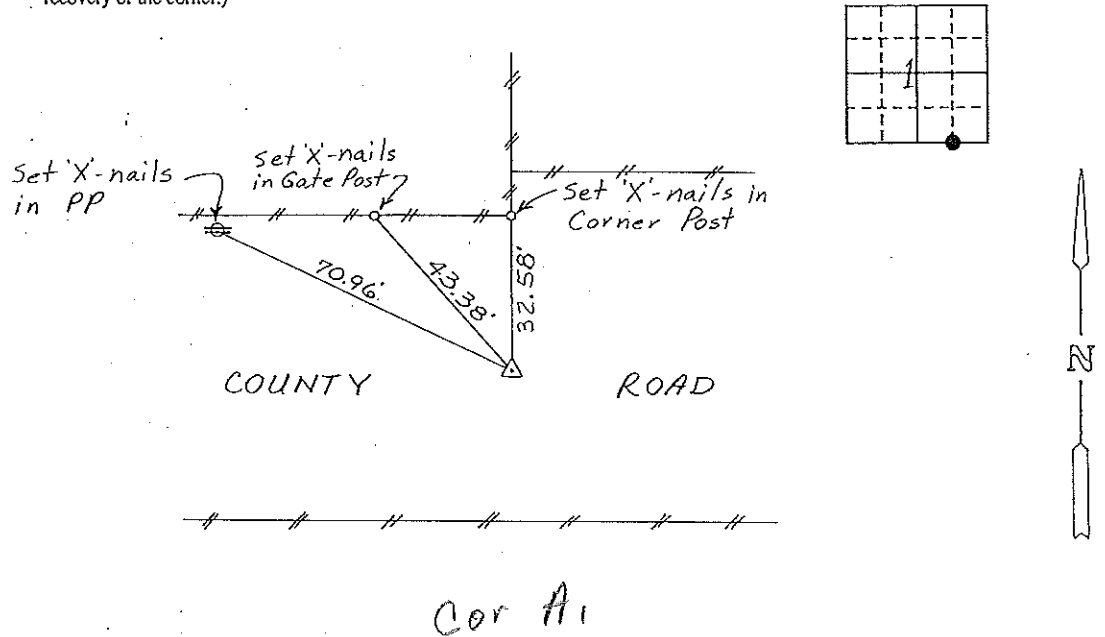
Land Survey Monuments situated in Section 1, Township 94N, Range 13W, of the Fifth Principal Meridian, CHICKASAW County, Iowa. Previously recorded in (NONE) in County Recorder's Office.

(Show reason for preparing this certificate, the evidence and detailed procedures used in establishing the corner positions and monumentation found or placed.)

Monument Description and Remarks: SE CORNER, SW 1/4 - SE 1/4, SECTION 1-T94N-R13W:
SET 1/2" REBAR WITH CAP ON SOUTH SECTION LINE & IN LINE WITH FENCE NORTH.

PLAN - VIEW

(Show a minimum of three reference ties to durable physical objects, relevant monuments and physical conditions that will enable recovery of the corner.)



Cor A1

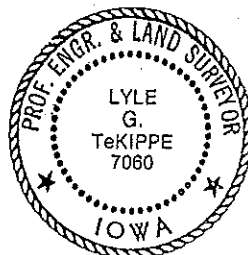
SE CORNER, SW 1/4 - SE 1/4, SECTION 1-T94N-R13W

I hereby certify that the survey work was completed and this certificate was prepared by me or under my direct personal supervision and that I am a duly registered land surveyor under the laws of the state of Iowa.

Signature: Lyle G. TeKippe
Name typed or printed: Lyle G. TeKippe
Date: 8-3-92 Reg. No. 7060

Corners	List Corners to be Indexed		
	Section	Twp	Range
SE CORNER	1	94N	13W
SW 1/4 - SE 1/4			

SEAL



Handwritten note: Paid in the Bill 8/20