

Herold - Reicks Surveying, 25 1/2 East Main Street, Suite 204, New Hampton, IA 50659, Ph. 641-394-2125

UNITED STATES PUBLIC LAND SURVEY CORNER CERTIFICATE

Land Survey Monuments situated in Section 1, Township 94 North, Range 13 West of the Fifth Principal Meridian, Chickasaw County, Iowa. Previously recorded in (1) Bk. 2000, Pg. 1170 (2) BK. 150, Pg. 114 in County Recorder's Office.
(book, page, document number, etc.)

(Show reason for preparing this certificate, the evidence and detailed procedures used in establishing the corner positions and monumentation found or placed.)

Monument Description and Remarks:

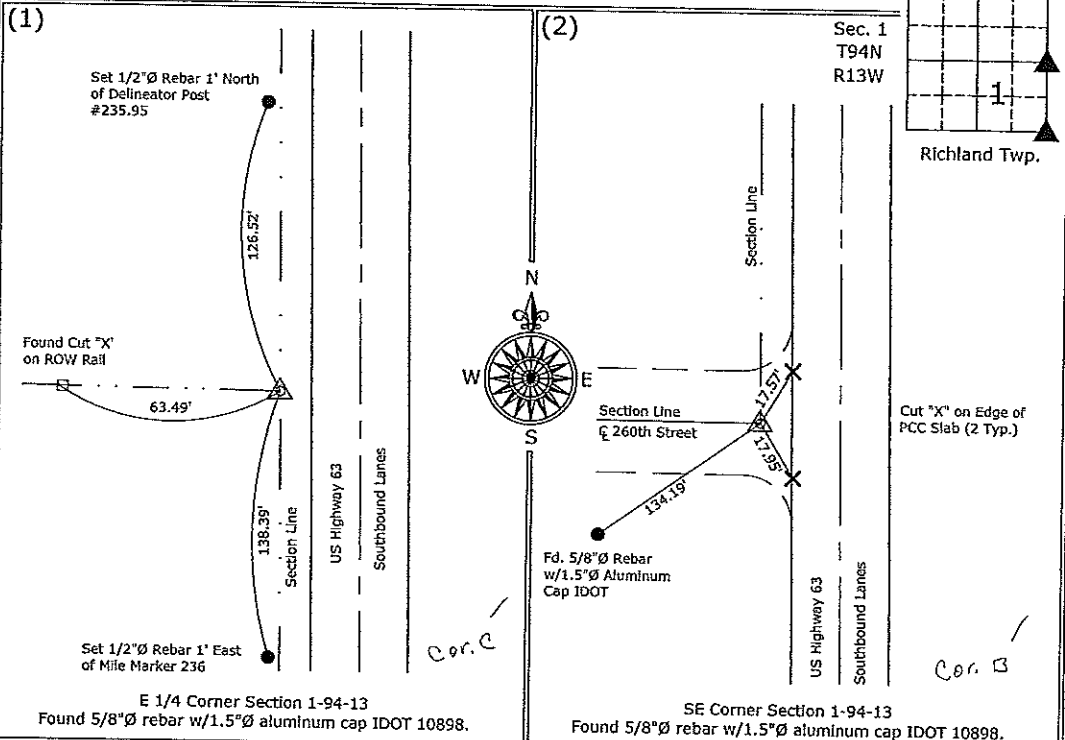
East 1/4 Corner - Found 5/8"Ø rebar w/1.5"Ø aluminum cap IDOT 10898.

SE Corner - Found 5/8"Ø rebar w/1.5"Ø aluminum cap IDOT 10898.

Note: Both corners were re-monumented by the IDOT as a result of the relocation of US Highway 63.

PLAN - VIEW

(Show a minimum of three reference ties to durable physical objects, relevant monuments and physical conditions that will enable recovery of the corner.)



E 1/4 Corner Section 1-94-13
 Found 5/8"Ø rebar w/1.5"Ø aluminum cap IDOT 10898.

SE Corner Section 1-94-13
 Found 5/8"Ø rebar w/1.5"Ø aluminum cap IDOT 10898.



I hereby certify that this land surveying document was prepared and the related survey work was performed by me or under my direct personal supervision and that I am a duly licensed Land Surveyor under the laws of the State of Iowa.

Paul R. Herold 1-30-07
 Paul R. Herold Date:

License number 15525
 My license renewal date is December 31, 2008.
 Sheets covered by this seal: Sheet P1

List Corners to be Indexed			
Corners	Section	Twp.	Range
E 1/4	1	94	13
SE	1	94	13

S:\Projects\2007\2007-002\dwg\2007-002.dwg
 Project Number: 2007-002
 FB: Chickasaw County 1, Pg. 1

UNITED STATES PUBLIC LAND SURVEY CORNER CERTIFICATE

OF

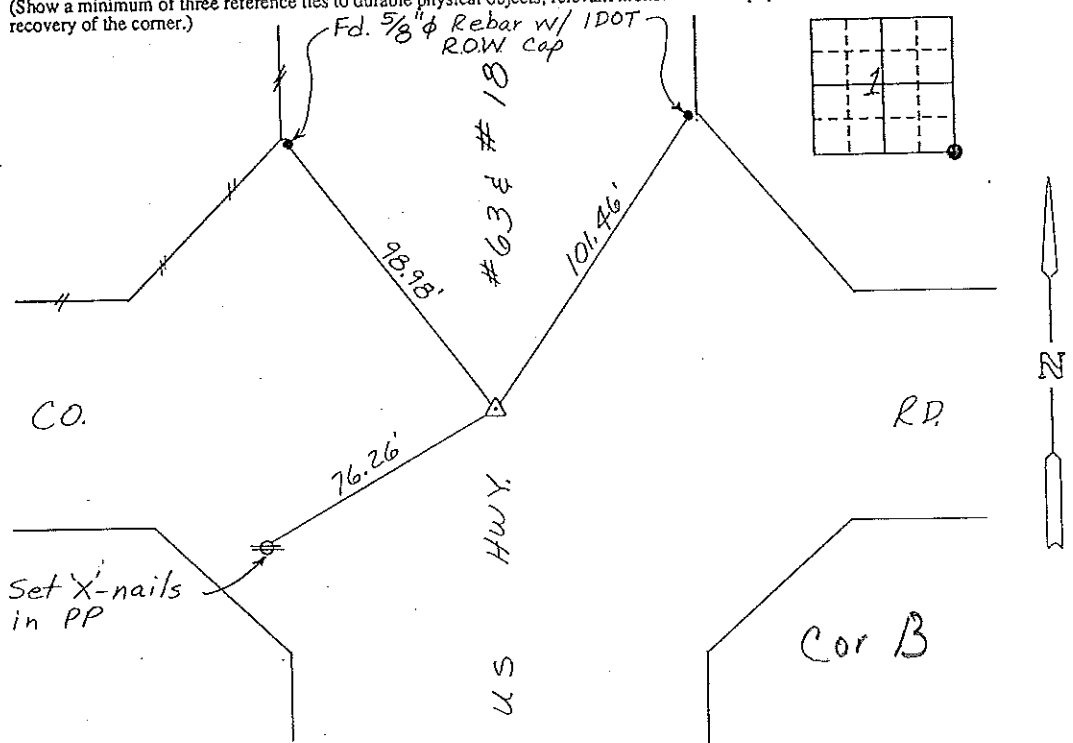
Land Survey Monuments situated in Section 1, Township 94 N, Range 13 W, of the Fifth Principal Meridian, CHICKASAW County, Iowa. Previously recorded in (NONE) in County Recorder's Office.

(Show reason for preparing this certificate, the evidence and detailed procedures used in establishing the corner positions and monumentation found or placed.)

Monument Description and Remarks: SE CORNER, SECTION 1-T94N-R13W:
FOUND IDOT MARKER WITH ALUMINUM CAP,

PLAN - VIEW

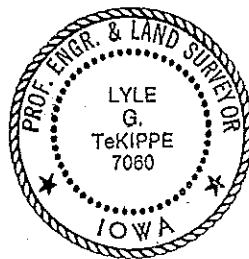
(Show a minimum of three reference ties to durable physical objects, relevant monuments and physical conditions that will enable recovery of the corner.)



SE CORNER, SECTION 1-T94N-R13W

I hereby certify that the survey work was completed and this certificate was prepared by me or under my direct personal supervision and that I am a duly registered land surveyor under the laws of the state of Iowa.

Signature: Lyle G. TeKippe
Name typed or printed: Lyle G. TeKippe
Date: 8-3-92 Reg. No. 7060



SEAL

Corners	List Corners to be Indexed	Section	Twp	Range
SE	1	94N	13W	

*Placed in
Twp B
8/92*