

Chickasaw Co. Recorder  
 Cindy Messersmith  
**Fee Book 2007-0973**  
 05/14/2007 @1100AM  
 SCC SEC COR CERT  
 Book: Page: # Pages: 1  
 Total Fees: \$7.00

*Herold - Recks Surveying, 25 1/2 East Main Street, Suite 204, New Hampton, IA 50659, Ph. 641-994-2725*

**UNITED STATES PUBLIC LAND SURVEY CORNER CERTIFICATE**

Land Survey Monuments situated in:  
 Section 12, Township 94 North, Range 13 West of the Fifth Principal Meridian,  
Chickasaw County, Iowa. Previously recorded in 1. } None  
 in County Recorder's Office. 2. } None

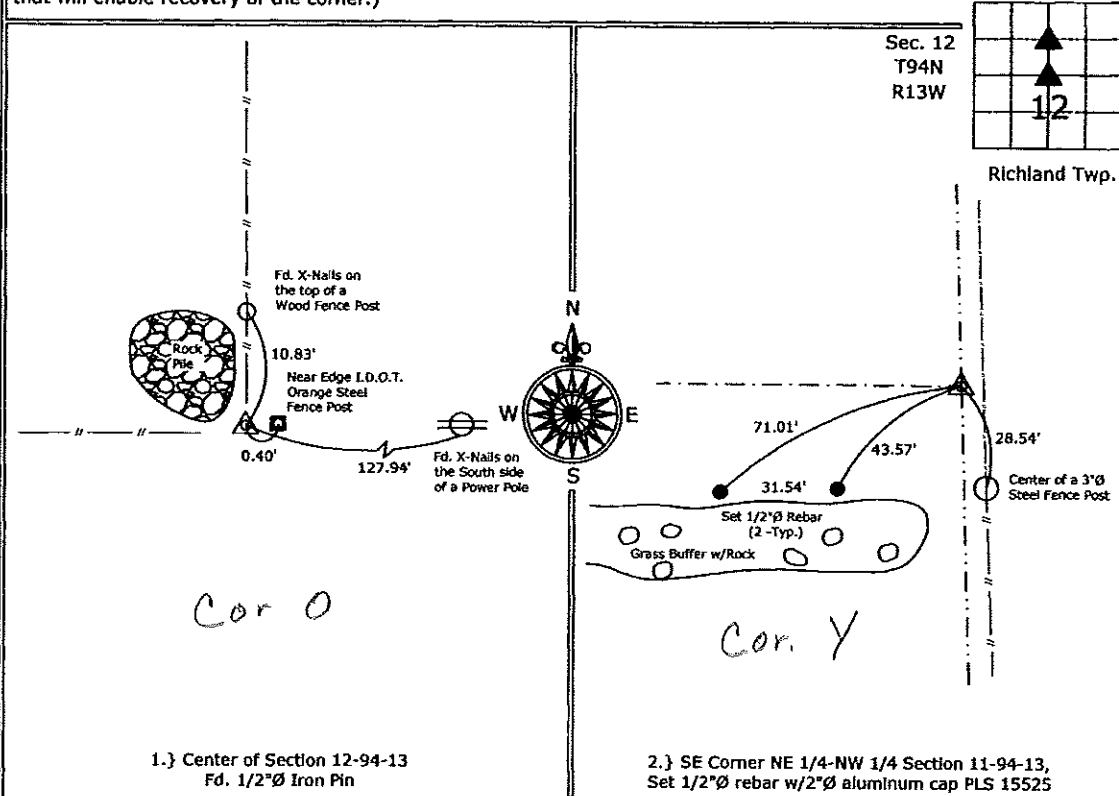
(Show reason for preparing this certificate, the evidence and detailed procedures used in establishing the corner positions and monumentation found or placed.)

**Monument Description and Remarks:**

- 1.) Center of Section 12-94-13, Fd. 1/2"Ø Iron Pin from Iowa Department of Transportation Ties.
- 2.) SE Corner NE 1/4-NW 1/4 Section 11-94-13, Set 1/2"Ø rebar w/2"Ø aluminum cap PLS 15525 midway and on line between the Center of Section and the N 1/4 Corner.

**PLAN - VIEW**

(Show a minimum of three reference ties to durable physical objects, relevant monuments and physical conditions that will enable recovery of the corner.)



1.) Center of Section 12-94-13  
 Fd. 1/2"Ø Iron Pin

2.) SE Corner NE 1/4-NW 1/4 Section 11-94-13,  
 Set 1/2"Ø rebar w/2"Ø aluminum cap PLS 15525



I hereby certify that this land surveying document was prepared and the related survey work was performed by me or under my direct personal supervision and that I am a duly licensed Land Surveyor under the laws of the State of Iowa.

*Paul R. Herold* 5-12-07  
 Paul R. Herold Date:

License number 15525  
 My license renewal date is December 31, 2008.  
 Sheets covered by this seal: Sheet P1

List Corners to be Indexed			
Corners	Section	Twp.	Range
Center	12	94	13
SE-NE-NW	12	94	13

Project Number: 2007-033

FB: Chickasaw County 1, Pgs. 13-20

File: S:\Projects\2007\2007-026.dwg, 5/14/2007 8:34:02 AM