

Chickasaw Co. Recorder
 Cindy Messersmith
Fee Book 2009-0859
 04/30/2009 @0914AM
 SCC SEC COR CERT
 Book: Page: # Pages: 1
 Total Fees: \$7.00

TeKIPPE ENGINEERING, P.C., 128 South Vine Street, West Union, Iowa 52175 Phone (563) 422-5131

UNITED STATES PUBLIC LAND SURVEY CORNER CERTIFICATE
 OF

Land Survey Monuments situated in Section 13, Township 94 North, Range 13 West of the Fifth Principal Meridian, Chickasaw County, Iowa.

Previously recorded in (1) none (2) none in County Recorder's Office.
(book, page, document number, etc.)

(Show reason for preparing this certificate, the evidence and detailed procedures used in establishing the corner positions and monumentation found or placed.)

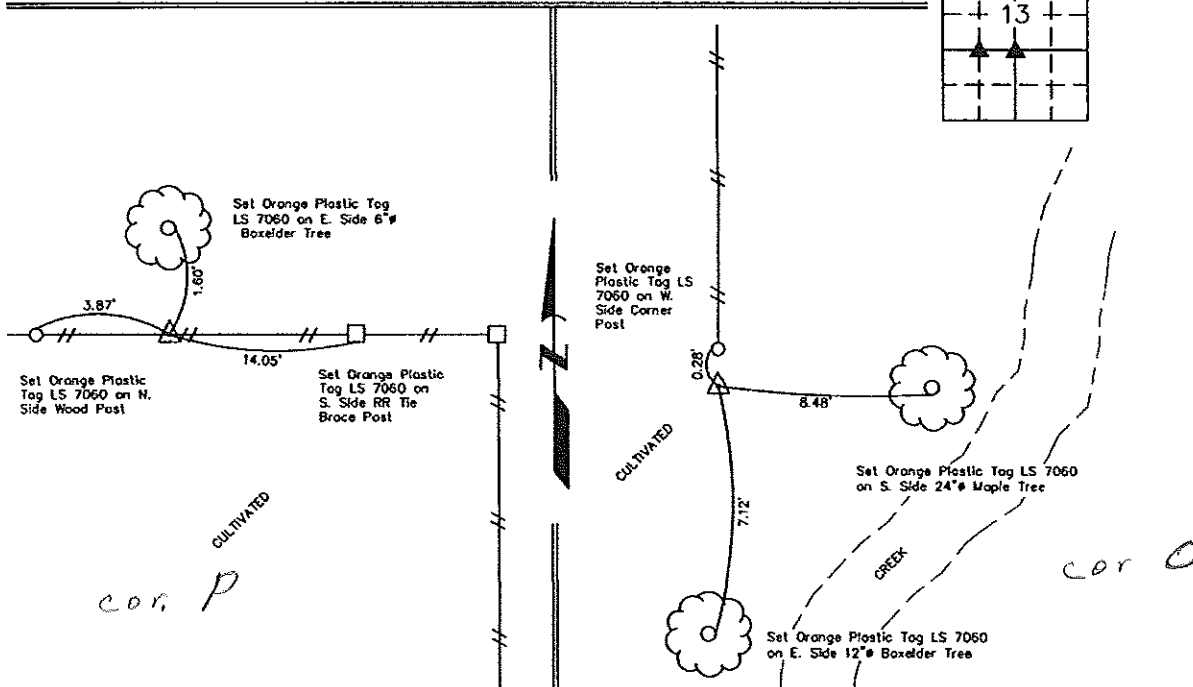
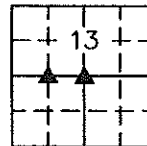
Monument Description and Remarks: (1) NE Corner of NW1/4-SW1/4 of Section 13-T94N-R13W:
 Found 5/8" pipe with aluminum cap LS 2886 from survey recorded July 16, 2004, in Book 2004, Page 1663, on file in the Chickasaw County Recorder's office, New Hampton, Iowa.

(2) Center of Section 13-T94N-R13W:
 Found 5/8" pipe with aluminum cap LS 2886 from survey recorded March 23, 1989, in Deed Book 142, Pages 270-271, on file in the Chickasaw County Recorder's office, New Hampton, Iowa.

PLAN VIEW

Project Number 091059.LS
 Field Book: 46M, Pages 60-62

Show a minimum of three reference ties to durable physical objects, relevant monuments and physical conditions that will enable recovery of the corner.



(1) NE Corner of NW1/4-SW1/4 of Sec. 13-T94N-R13W
 Found 5/8" Pipe w/Alum. Cap LS 2886

(2) Center of Sec. 13-T94N-R13W
 Found 5/8" Pipe w/Alum. Cap LS 2886

I hereby certify that this land surveying document was prepared and the related survey work was performed by me or under my direct personal supervision and that I am a duly licensed Land Surveyor under the laws of the State of Iowa.

Lyle G. TeKippe 4-28-09
 Lyle G. TeKippe Date

License Number 7060
 My license renewal date is December 31, 2010.
 Sheets covered by this seal: Individual

List Corners to be Indexed			
Corners	Section	Twp.	Range
NE of NW-SW	13	94N	13W
Center of	13	94N	13W

X:\Section Corners\Sec. 13\13-94-13LM.dwg