

Chickasaw Co. Recorder  
 Cindy Messersmith  
**Fee Book 2009-0860**  
 04/30/2009 @0919AM  
 SCC SEC COR CERT  
 Book: Page: # Pages: 1  
 Total Fees: \$7.00

TeKIPPE ENGINEERING, P.C., 128 South Vine Street, West Union, Iowa 52175 Phone (563) 422-6131

**UNITED STATES PUBLIC LAND SURVEY CORNER CERTIFICATE**  
 OF

Land Survey Monuments situated in Section 13, Township 94 North, Range 13 West of the Fifth Principal Meridian, Chickasaw County, Iowa.  
 Previously recorded in none in County Recorder's Office.  
(book, page, document number, etc.)

(Show reason for preparing this certificate, the evidence and detailed procedures used in establishing the corner positions and monumentation found or placed.)

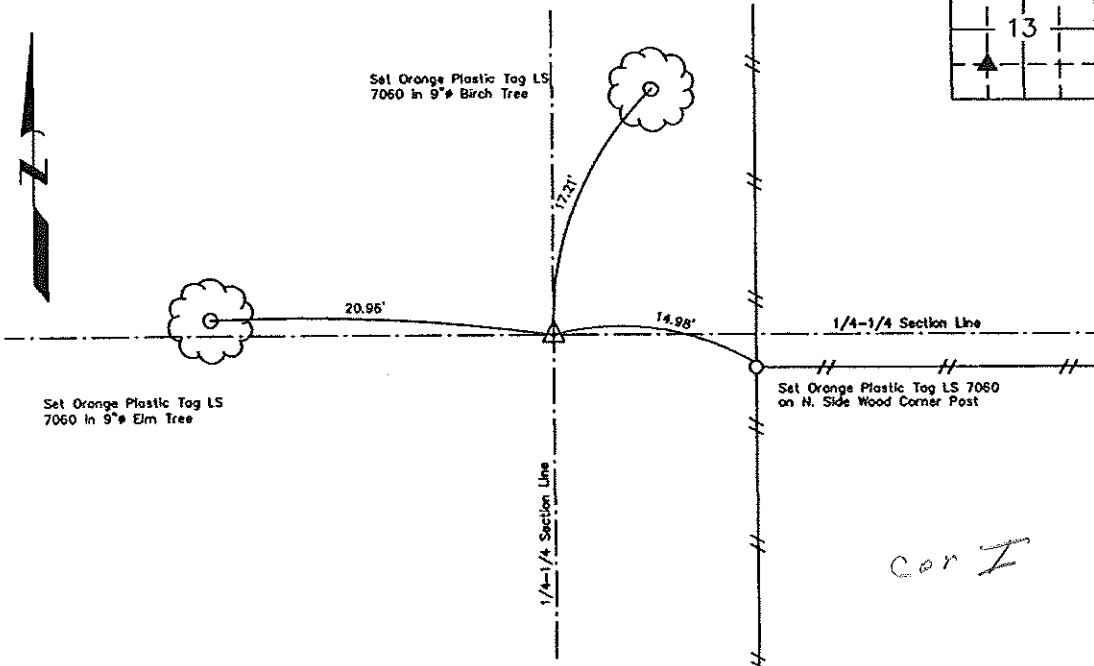
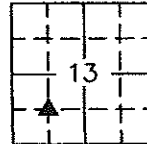
Monument Description and Remarks: SE Corner of NW-SW of Section 13-T94N-R13W:

Set 1/2" rebar with 2" aluminum cap LS 7060 at the intersection of the 1/4-1/4 lines.

**PLAN VIEW**

Project Number 091059.LS  
 Field Book: 46M, Pages 60-62

Show a minimum of three reference ties to durable physical objects, relevant monuments and physical conditions that will enable recovery of the corner.



SE Corner of NW1/4-SW1/4 of Sec. 13-T94N-R13W  
 Set 1/2" Rebar w/2" Aluminum Cap LS 7060

*Cor I*

	I hereby certify that this land surveying document was prepared and the related survey work was performed by me or under my direct personal supervision and that I am a duly licensed Land Surveyor under the laws of the State of Iowa.	<b>List Corners to be Indexed</b>							
	Lyle G. TeKippe <i>Lyle G. TeKippe</i> 4-28-09 Date	<table border="1"> <thead> <tr> <th>Corners</th> <th>Section</th> <th>Twp.</th> <th>Range</th> </tr> </thead> <tbody> <tr> <td>SE of NW-SW</td> <td>13</td> <td>94N</td> <td>13W</td> </tr> </tbody> </table>	Corners	Section	Twp.	Range	SE of NW-SW	13	94N
Corners	Section	Twp.	Range						
SE of NW-SW	13	94N	13W						
License Number 7060 My license renewal date is December 31, 2010. Sheets covered by this seal: Individual		X:\Section Corners\Sec. 13\13-94-13Q.dwg							