

Chickasaw Co. Recorder
 Cindy Messersmith
Fee Book 2017-0016
 01/04/2017 @0907AM
 SCC SEC COR CERT
 Book: Page: # Pages: 1
 Total Fees: \$7.00

Prepared by & Return to: Herald - Reicks Surveying, 10 East Main Street, New Hampton, IA 50659, Ph. 641-394-2725

United States Public Land Survey Corner Certificate

Land Survey Monument situated in
 Section 13, Township 94 North, Range 13 West of the Fifth Principal Meridian, Chickasaw County, Iowa.
 Not on file in the County Recorder's office.

This certificate is being prepared in compliance with Iowa Code Chapter 355.11 because:

- There is no certificate on file for this corner.
- There are no longer three valid ties of record.
- There are changes to reference ties of record.
- There is change of monumentation of record.
- To clarify description of record monument (ties).

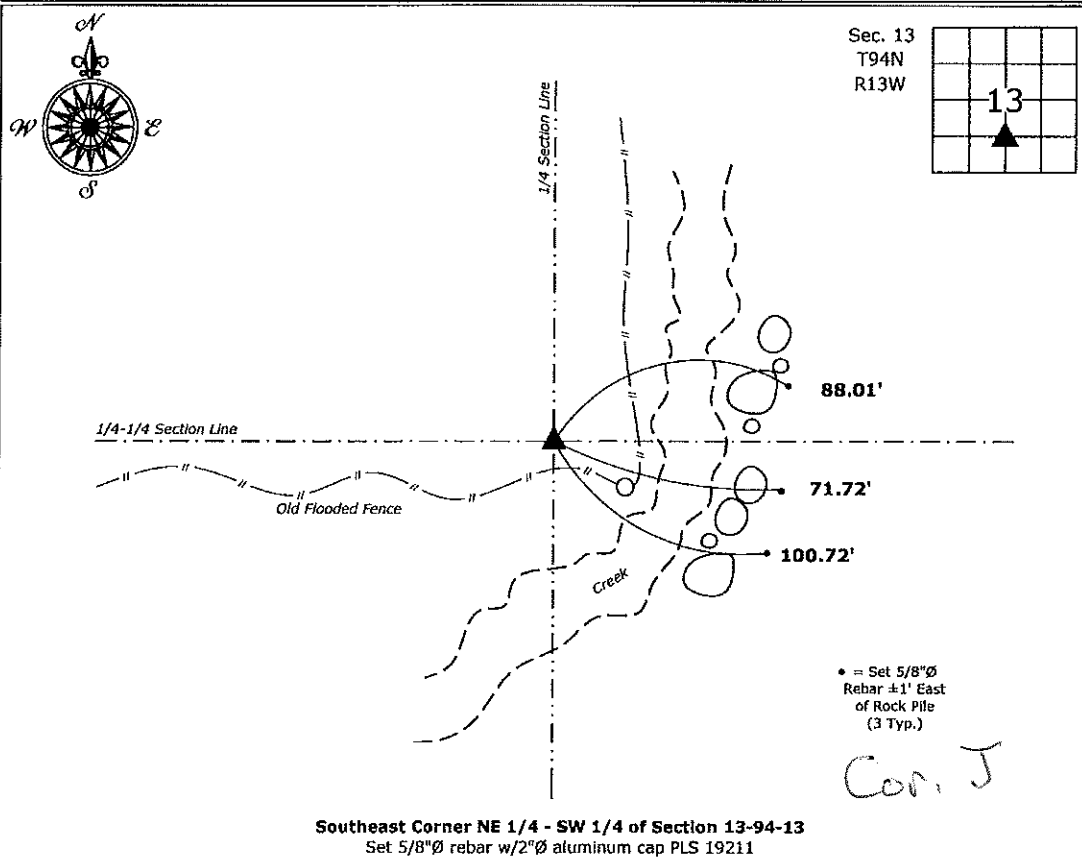
Monument Description and Remarks:

Southeast Corner NE 1/4 - SW 1/4: Set 5/8"Ø Rebar w/2"Ø aluminum cap PLS 19211 equidistant and online between the Center and South 1/4 Corners of said Section.

An extensive search of all of the records within the County offices was performed as part of the section corner recovery, No records were located of the perpetuation of a monument at this corner.

Plan View

(Show a minimum of three reference ties to durable physical objects, relevant monuments and physical conditions that will enable recovery of the corner.)



Southeast Corner NE 1/4 - SW 1/4 of Section 13-94-13
 Set 5/8"Ø rebar w/2"Ø aluminum cap PLS 19211



I hereby certify that this land surveying document was prepared and the related survey work was performed by me or under my direct personal supervision and that I am a duly licensed Land Surveyor, under the laws of the State of Iowa.
Kirk D. Reicks 1-2-17
 Kirk D. Reicks Date:
 License number 19211
 My license renewal date is December 31, 2018.
 Sheets covered by this seal: Individual sheet only

List Corner to be Indexed			
Corner	Section	Twp.	Range
SE-NE-SW	13	94	13

Project Number: 2016-148
 FB: Chickasaw Co. 8, Pgs. 17-18

File: S:_CSD Projects\County Control Systems\CHICKASAW\CHICK-42\CHICK-42.dwg, 1/2/2017 9:24:17 AM