

*Herold - Reicks Surveying, 18 East Main Street, New Hampton, IA 50659, Ph. 641-394-2725, Fax. 641-394-2718*

### UNITED STATES PUBLIC LAND SURVEY CORNER CERTIFICATE

Land Survey Monuments situated in Section 14, Township 94 North, Range 13 West of the Fifth Principal Meridian, Chickasaw County, Iowa. 1.) & 2.) Not previously recorded in the County Recorder's office.

This certificate is being prepared in compliance with Iowa Code Chapter 355.11 because:



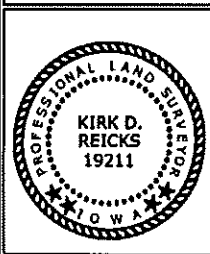
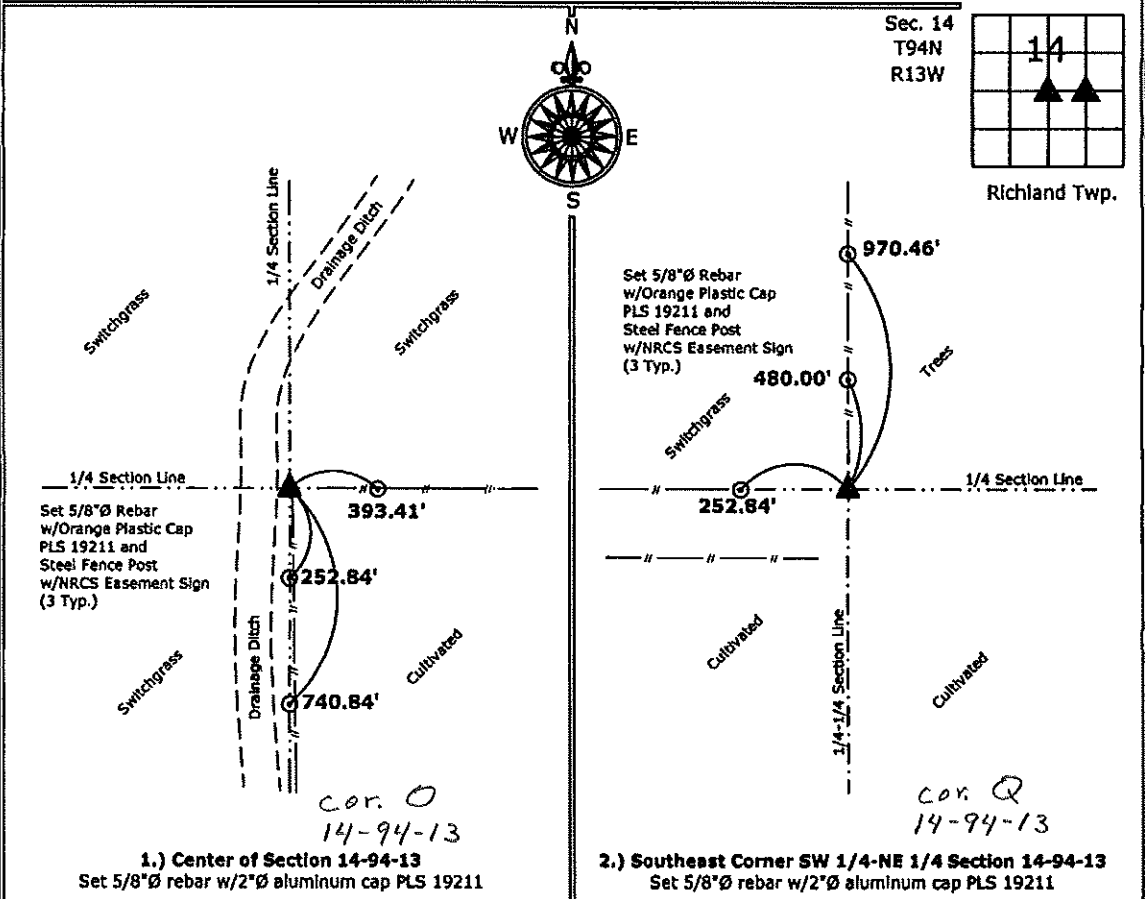
- 1.) & 2.)  There is no certificate on file for these corners.  
 There are no longer three valid ties of record.  
 There are changes to reference ties of record.  
 There is change of monumentation of record.  
 To clarify description of record monument (ties).

Monument Description and Remarks:

- Center: Set 5/8" rebar with 2"Ø aluminum cap PLS 19211 at the intersection of 1/4 Section Lines.
- Southeast Corner SW 1/4-NE 1/4: Set 5/8" rebar with 2"Ø aluminum cap PLS 19211 equidistant and online between the Center and the East 1/4 Corner of Section.

#### PLAN - VIEW

(Show a minimum of three reference ties to durable physical objects, relevant monuments and physical conditions that will enable recovery of the corner.)



I hereby certify that this land surveying document was prepared and the related survey work was performed by me or under my direct personal supervision and that I am a duly licensed Land Surveyor under the laws of the State of Iowa.

*Kirk D. Reicks* 10-26-10  
 Kirk D. Reicks Date:  
 License number 19211  
 My license renewal date is December 31, 2010.  
 Sheets covered by this seal: Individual sheet only

List Corners to be Indexed			
Corners	Section	Twp.	Range
CTR	14	94	13
SE-SW-NE	14	94	13

Project Number: 2010-130  
 FB: Chickasaw County 2, Pgs. 46