

Section 14-94-13
 As referred to in
 Engr. T.C. Book

XX DOCUMENT No. 02022 FILED FOR RECORD THE 1st DAY OF May 1996 AT 9:16 P.M. Chickasaw County Recorder
 C RECORDING FEE \$ 6.00 O'CLOCK A.M. BOOK 160 DEEDS PAGE 422
 S TRANSFER FEE \$ _____

Prepared by: Erdman Engineering P.C. 708 Commerce Drive, P.O. Box 246, Decorah Iowa, 52101
 Phone (319)382-4194, Fax (319)382-3623

United States Public Land Survey Corner Certificate

14 of

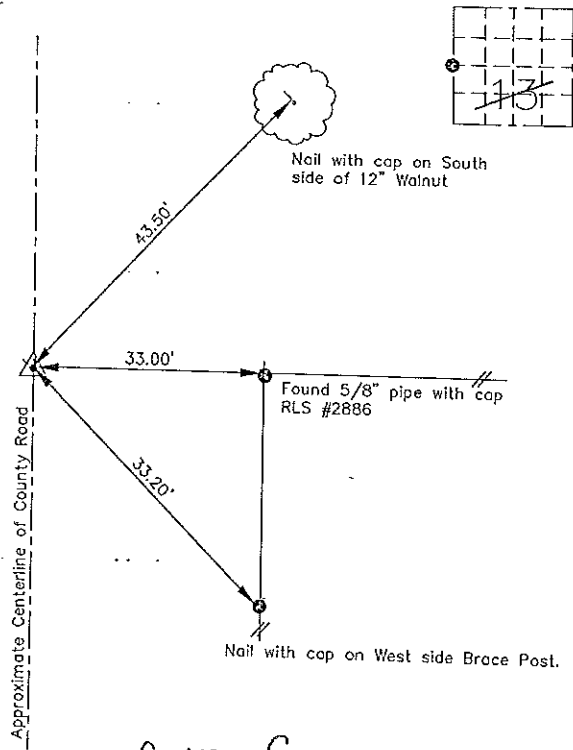
Land Survey Monuments situated in Section 13 Township 94 Range 13 of the Fifth Principle Meridian, Chickasaw County, Iowa. Previously recorded in does not apply in County Recorders Office.

(Show reason for preparing this certificate, the evidence and detailed procedures used in establishing the corner positions and monumentation found or placed.)

Monument Description and Remarks: This certificate is prepared in accordance with Section 355.11 of the 1995 Code of Iowa. No previous certificate has been filed for this corner location. Based on previous plat Bk.120, p.53 in the Chickasaw County Recorder's Office we found a 1/2" bar at the W 1/4 corner of Section 13-94-13.

Plan-View
 (Show a minimum of three reference ties to durable physical objects, relevant monuments and physical conditions that will enable recovery of the corner.)

W 1/4 Corner- Found 1/2" bar



Cor C
 14-94-13

I hereby certify that the survey work was completed and this certificate was prepared by me or under by direct supervision and that I am a duly registered land surveyor under the laws of the State of Iowa.

Signature: Lindsay Erdman
 Lindsay Erdman, P.E. and L.S.
 Date: 3/18/96 Reg. No. 11442
 My license will be renewed January 1, 1997

Corners	List Section	Range	Twp.
W 1/4	13	94	13

2007-2075
10/24/2007

TeKIPPE ENGINEERING, P.C., 128 South Vine Street, West Union, Iowa 52176 Phone (319) 422-5131

UNITED STATES PUBLIC LAND SURVEY CORNER CERTIFICATE

OF

Land Survey Monuments situated in Section 14, Township 94 North, Range 13 West of the Fifth Principal Meridian, CHICKASAW County, Iowa. Previously recorded in W 1/4 Cor-none, E 1/4 Cor-Bk. 160, Pg. 422 in County Recorder's Office. (book, page, document number, etc.)

(Show reason for preparing this certificate, the evidence and detailed procedures used in establishing the corner positions and monumentation found or placed.)

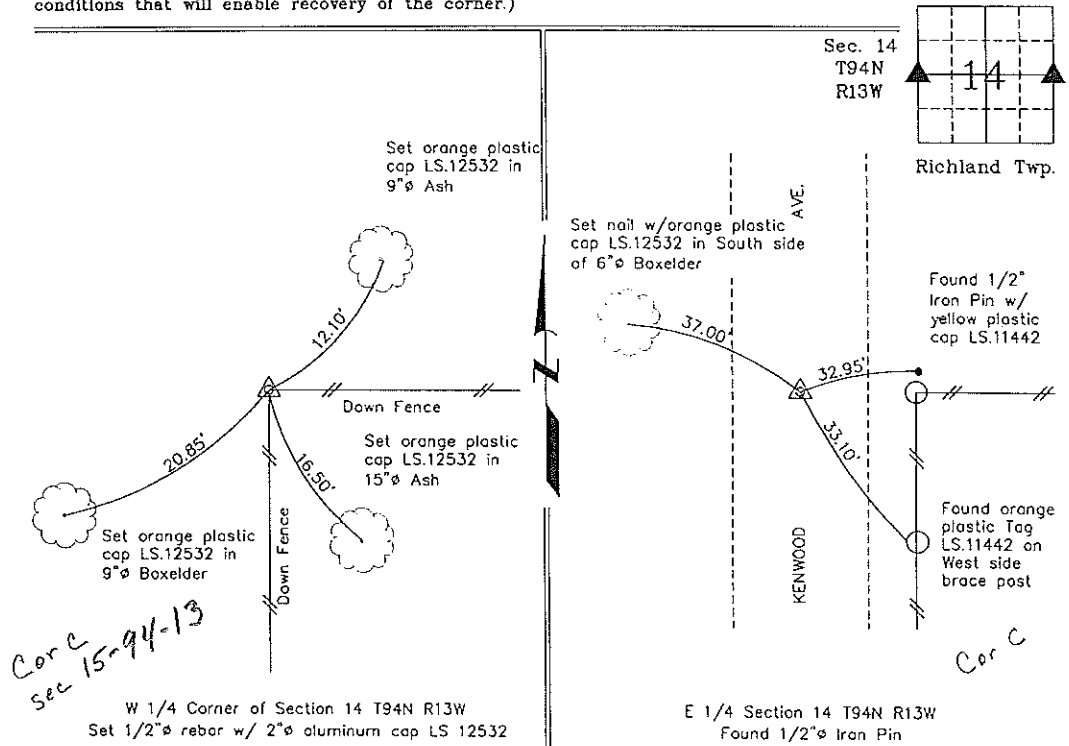
Monument Description and Remarks: W 1/4 Corner of Section 14 T94N R13W: Set 1/2"Ø rebar w/ 2"Ø aluminum cap LS 12532 @ intersection of old, down fences.

E 1/4 Corner of Section 14 T94N R13W: Found 1/2"Ø iron pin recorded in Deed Book 160 Page 422. Updated certificate because one reference tie is gone.

PLAN - VIEW

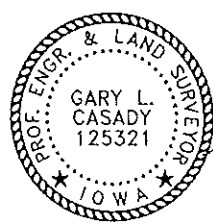
Project Number 07168 LS
FA 45M PG. 42-48

(Show a minimum of three reference ties to durable physical objects, relevant monuments and physical conditions that will enable recovery of the corner.)



Corc
Sec 15-94-13

Corc



I hereby certify that this land surveying document was prepared and the related survey work was performed by me or under my direct personal supervision and that I am a duly licensed Land Surveyor under the laws of the State of Iowa

Gary L. Casady 10-23-07
Date
Gary L. Casady
License number 12532

My license renewal date is December 31, 2008
Sheets covered by this seal: Individual

List Corners to be Indexed			
Corners	Section	Twp.	Range
W 1/4	14	94N	13W
E 1/4	14	94N	13W

X:\Section Corners\Sec. 14\14-94-13ko.dwg

COUNTY ENGINEER'S COPY