

Chickasaw Co. Recorder  
 Cindy Messersmith  
**Fee Book 2009-0255**  
 02/03/2009 @10:37AM  
 SCC SEC COR CERT  
 Book: Page: # Pages: 1  
 Total Fees: \$7.00

Section 11-94-13  
 As referred to in  
 Engr. Tie Book

Herold - Reicks Surveying, 25 1/2 East Main Street, Suite 204, New Hampton, IA 50659, Ph. 641-394-2725

**UNITED STATES PUBLIC LAND SURVEY CORNER CERTIFICATE**

Land Survey Monuments situated in Section 14, Township 94 North, Range 13 West of the Fifth Principal Meridian, Chickasaw County, Iowa. 1.) Previously recorded as Doc. #2007-2074 in the County Recorder's office. 2.) Not previously recorded in the County Recorders office.

This certificate is being prepared in compliance with Iowa Code Chapter 355.11 because:

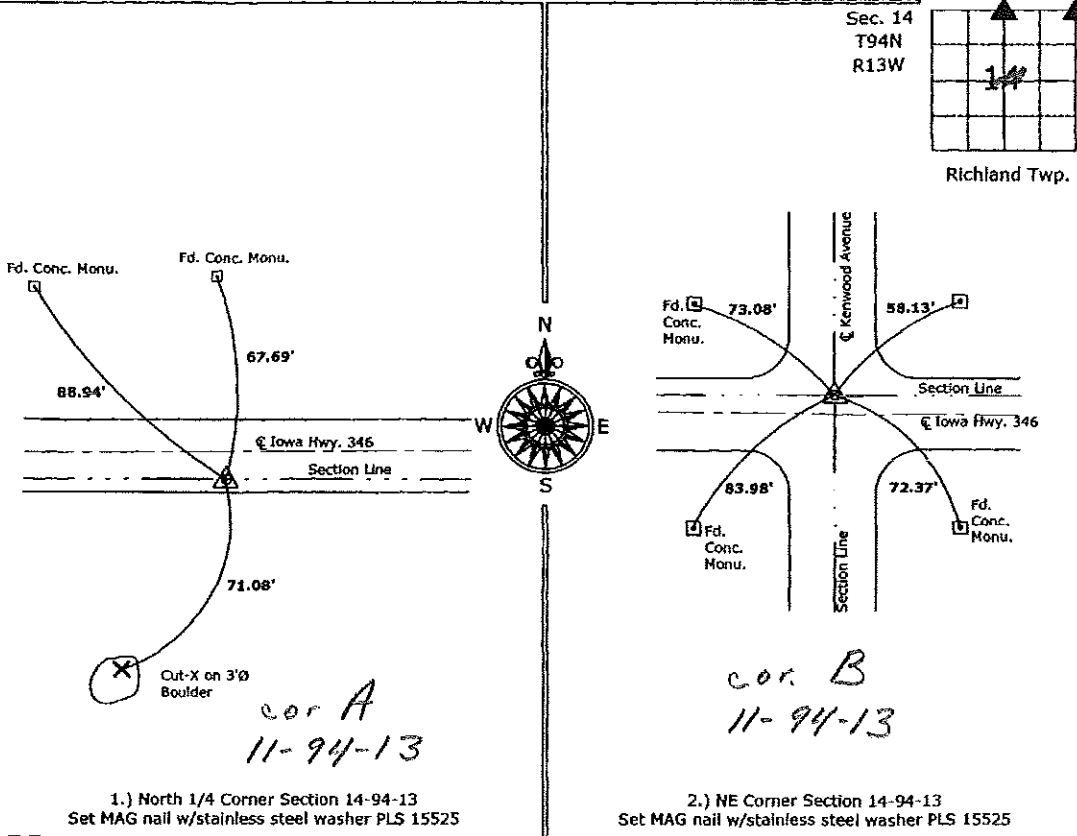
- 2.  There is no certificate on file for this corner.
- There are no longer three valid ties of record.
- There are changes to reference ties of record.
- 1.  There is change of monumentation of record.
- To clarify description of record monument (ties).

**Monument Description and Remarks:**

- 1.) **North 1/4 Corner Section 14-94-13:** Set MAG nail w/stainless steel washer PLS 15525, 8.54' South of the Centerline of Iowa Hwy. 346, from previously obtained coordinates. Monument set after an HMA overlay.
- 2.) **NE Corner Section 14-94-13:** Set MAG nail w/stainless steel washer PLS 15525, from previously obtained coordinates. Monument set after an HMA overlay.

**PLAN - VIEW**

(Show a minimum of three reference ties to durable physical objects, relevant monuments and physical conditions that will enable recovery of the corner.)



1.) North 1/4 Corner Section 14-94-13  
 Set MAG nail w/stainless steel washer PLS 15525

2.) NE Corner Section 14-94-13  
 Set MAG nail w/stainless steel washer PLS 15525



I hereby certify that this land surveying document was prepared and the related survey work was performed by me or under my direct personal supervision and that I am a duly licensed Land Surveyor under the laws of the State of Iowa.  
*Paul R. Herold* 1-28-09  
 Paul R. Herold Date:  
 License number 15525  
 My license renewal date is December 31, 2010.  
 Sheets covered by this seal: Individual sheet only

List Corners to be Indexed			
Corners	Section	Twp.	Range
N1/4	14	94	13
NE	14	94	13

Project Number: 2009-003  
 FB: Chickasaw County 1, Pg. 18

File: S:\Projects\2009\2009-003\dwg\1/28/2009 3:35:13 PM

Section 10-94-13  
As referred to in  
Engr. Title Book

Chickasaw Co. Recorder  
Cindy Messersmith  
**Fee Book 2007-0971**  
05/14/2007 @1043AM  
SCC SEC COR CERT  
Book: Page: # Pages: 1  
Total Fees: \$7.00

Herold - Reicks Surveying, 25 1/2 East Main Street, Suite 204, New Hampton, IA 50659, Ph. 641-394-2725

**UNITED STATES PUBLIC LAND SURVEY CORNER CERTIFICATE**

Land Survey Monuments situated in:  
Section 1011, Township 94 North, Range 13 West of the Fifth Principal Meridian,  
Chickasaw County, Iowa. Previously recorded in 1. } None  
in County Recorder's Office. 2. } None

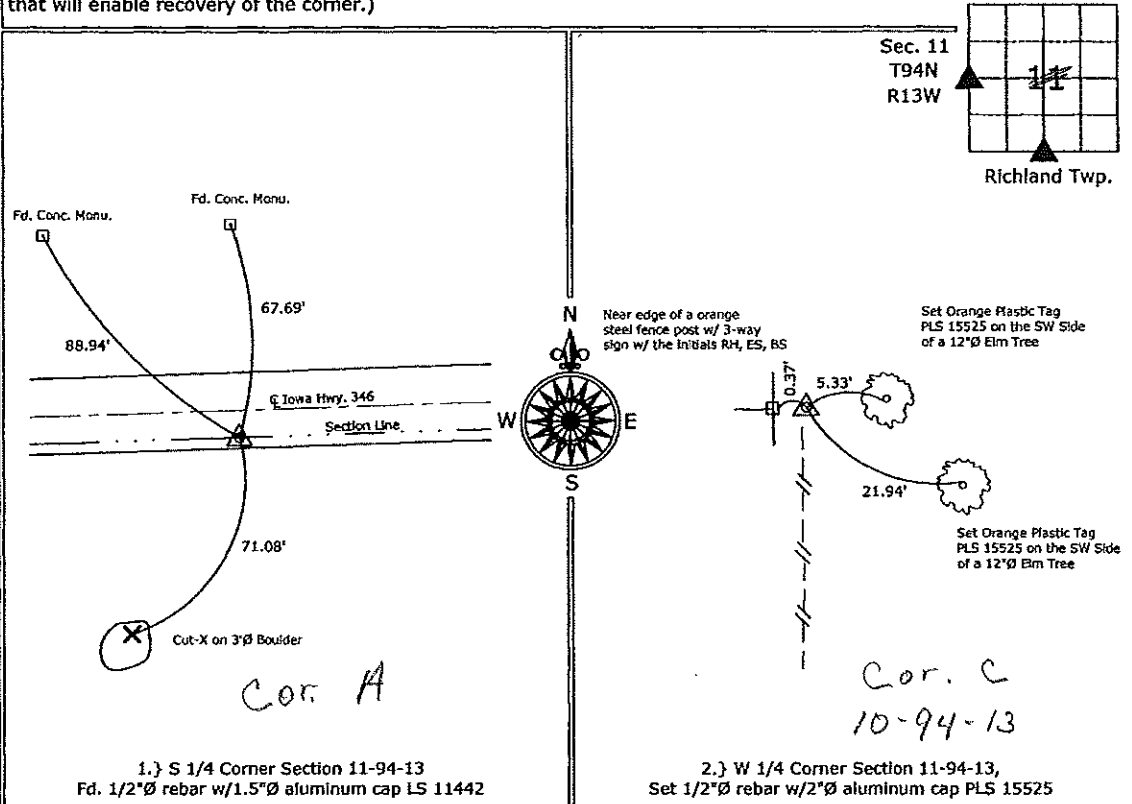
(Show reason for preparing this certificate, the evidence and detailed procedures used in establishing the corner positions and monumentation found or placed.)

**Monument Description and Remarks:**

- 1. } S 1/4 Corner Section 11-94-13, Fd. 1/2"Ø rebar w/1.5"Ø aluminum cap LS 11442, 8.54' South of the Centerline of Iowa Hwy. 346, from information on a survey and plat made by Lindsay Erdman, recorded April 7, 2005, Doc. #2005-0608.
- 2. } W 1/4 Corner Section 11-94-13, Set 1/2"Ø rebar w/2"Ø aluminum cap PLS 15525 at the intersection of possession lines, as the only remaining evidence of the corner position.

**PLAN - VIEW**

(Show a minimum of three reference ties to durable physical objects, relevant monuments and physical conditions that will enable recovery of the corner.)



1. } S 1/4 Corner Section 11-94-13  
Fd. 1/2"Ø rebar w/1.5"Ø aluminum cap LS 11442

2. } W 1/4 Corner Section 11-94-13,  
Set 1/2"Ø rebar w/2"Ø aluminum cap PLS 15525



I hereby certify that this land surveying document was prepared and the related survey work was performed by me or under my direct personal supervision and that I am a duly licensed Land Surveyor under the laws of the State of Iowa.

*Paul R. Herold* 5-12-07  
Paul R. Herold Date:

License number 15525  
My license renewal date is December 31, 2008.  
Sheets covered by this seal: Sheet P1

**List Corners to be Indexed**

Corners	Section	Twp.	Range
S 1/4	11	94	13
W 1/4	11	94	13

Project Number: 2007-033

FB: Chickasaw County 1, Pgs. 13-20

2007-2074  
10/24/07

Section 11-94-13  
As referred to in  
Engr. T.C. Book

TEKIPPE ENGINEERING, P.C., 128 South Vine Street, West Union, Iowa 52175 Phone (563) 422-5131

UNITED STATES PUBLIC LAND SURVEY CORNER CERTIFICATE

OF //

Land Survey Monuments situated in Section 14, Township 94 North, Range 13 West of the Fifth Principal Meridian, CHICKASAW County, Iowa. Previously recorded in Book 2007 Documt #0971 in County Recorder's Office.  
(book page, document number, etc.)

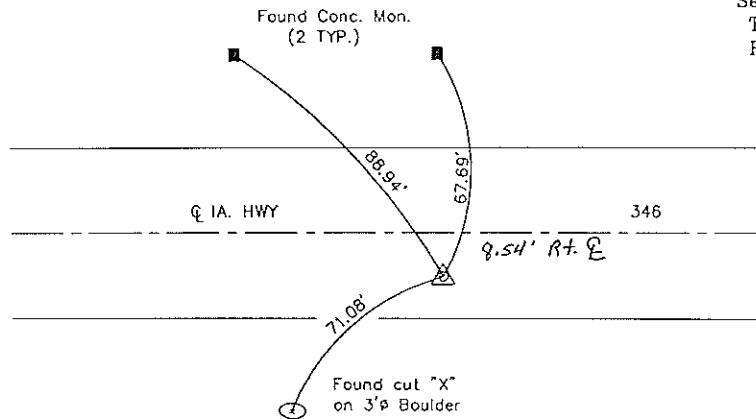
(Show reason for preparing this certificate, the evidence and detailed procedures used in establishing the corner positions and monumentation found or placed.)

Monument Description and Remarks: N 1/4 Corner of Section 14 T94N R13W: Found 1/2" rebar matching recorded ties, except 1 1/2" aluminum cap was missing.

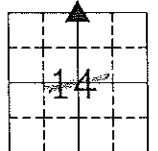
PLAN - VIEW

Project Number 07168.1S  
FB 48X PG. 42-48

(Show a minimum of three reference ties to durable physical objects, relevant monuments and physical conditions that will enable recovery of the corner.)



Sec. 14  
T94N  
R13W



Richland twp.



Cor A Sec 11-94-13

N 1/4 Corner of section 14 T94N R13W  
Found 1/2" rebar



I hereby certify that this land surveying document was prepared and the related survey work was performed by me or under my direct personal supervision and that I am a duly licensed Land Surveyor under the laws of the State of Iowa.  
*Gary L. Casady*  
Date: 10-23-07  
License number 12532  
My license renewal date is December 31, 2008  
Sheets covered by this seal: Individual

List Corners to be Indexed			
Corners	Section	Twp.	Range
N 1/4	14	94N	13W

X:\Section Corners\Sec. 14\14-94-13c.dwg