

Section 11-94-13
 AS referred to in
 Engr Tie Book

Chickasaw Co. Recorder
 Cindy Messersmith
Fee Book 2009-0254
 02/03/2009 @1036AM
 SCC SEC COR CERT
 Book: Page: # Pages: 1
 Total Fees: \$7.00

Herold - Recks Surveying, 25 1/2 East Main Street, Suite 204, New Hampton, IA 50659, Ph. 641-394-2725

UNITED STATES PUBLIC LAND SURVEY CORNER CERTIFICATE

Land Survey Monuments situated in Section 14, Township 94 North, Range 13 West of the Fifth Principal Meridian, Chickasaw County, Iowa. Not previously recorded in County Recorder's office.

This certificate is being prepared in compliance with Iowa Code Chapter 355.11 because:

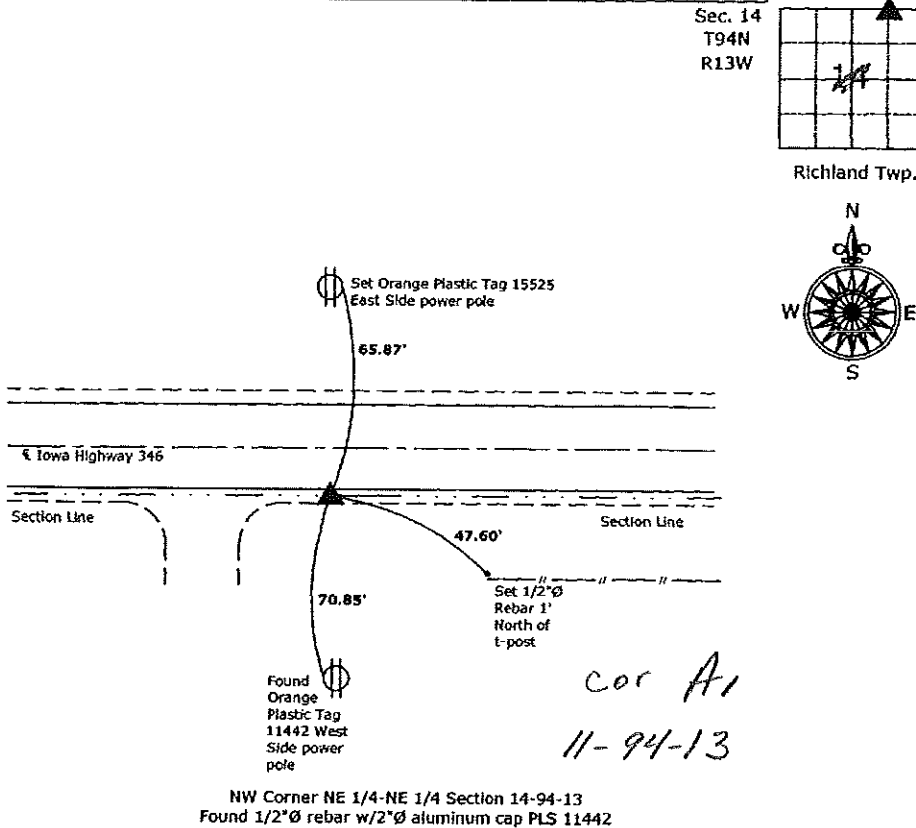
- There is no certificate on file for this corner.
- There are no longer three valid ties of record.
- There are changes to reference ties of record.
- There is change of monumentation of record.
- To clarify description of record monument (ties).

Monument Description and Remarks:

1.) NW Corner of the NE 1/4-NE 1/4 Section 14-94-13; Found 1/2"Ø rebar with 2" aluminum cap PLS 11442 from information on a survey and plat made by Lindsay Erdman, recorded April 7, 2005, Doc. #2005-0608.

PLAN - VIEW

(Show a minimum of three reference ties to durable physical objects, relevant monuments and physical conditions that will enable recovery of the corner.)



File: S:\Projects\2009\2009-003\dwg\2009-003.dwg, 1/28/2009 3:43:58 PM



I hereby certify that this land surveying document was prepared and the related survey work was performed by me or under my direct personal supervision and that I am a duly licensed Land Surveyor under the laws of the State of Iowa.

Paul R. Herold 1-28-09
 Paul R. Herold Date:
 License number 15525
 My license renewal date is December 31, 2010.
 Sheets covered by this seal: Individual sheet only

List Corners to be Indexed			
Corners	Section	Twp.	Range
NW-NE-NE	14	94	13

Project Number: 2009-003
 FB: Chickasaw County 3, Pg. 18